

À des fins de recherche uniquement

Anticorps Monoclonal anti-CD31

Numéro de catalogue: 65058-1-Ig **1 Publications**



Informations de base

Numéro de catalogue: 65058-1-Ig	Numéro d'acquisition GenBank: BC008519	Méthode de purification: Purification par affinité
Taille: 500ug, 0.5 mg/ml	Identification du gène (NCBI): 18613	CloneNo.: 390
Hôte: Rat	Nom complet: platelet/endothelial cell adhesion molecule 1	Dilutions recommandées: IF 1:50-1:500
Isotype: IgG2a		

Applications

Applications testées: IF,FC	Contrôles positifs: IF : cellules bEnd.3,
Demandes citées: IF	
Spécificité de l'espèce: souris	
Espèces citées: souris	

Informations générales

Platelet endothelial cell adhesion molecule-1 (PECAM-1, CD31) is a member of the immunoglobulin gene superfamily of cell adhesion molecules. CD31 is a transmembrane glycoprotein that is highly expressed on the surface of the endothelium, making up a large portion of its intracellular junctions. PECAM-1 is also present on the surface of hematopoietic cells and immune cells including platelets, monocytes, neutrophils, natural killer cells, megakaryocytes and some types of T-cell (PMID: 9011572). As well as its role in cell-cell adhesion, PECAM-1 functions as a signaling receptor, and is involved in important physiological events such as nitric oxide production, regulation of T-cell immunity and tolerance, leukocyte transendothelial migration and inflammation and angiogenesis (PMID: 21183735; 20978210; 17872453; 20634489).

Publications notables

Autrice	Pubmed ID	Journal	Application
Xiaopeng Ai	35697191	J Ethnopharmacol	IF

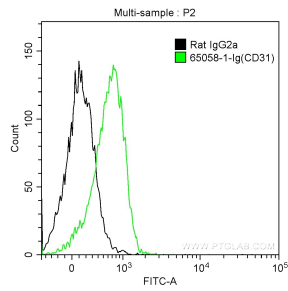
Stockage

Stockage:
Stocker à une température comprise entre 2 °C et 8 °C.
Tampon de stockage:
Solution saline tamponnée au borate, pH 8,2.

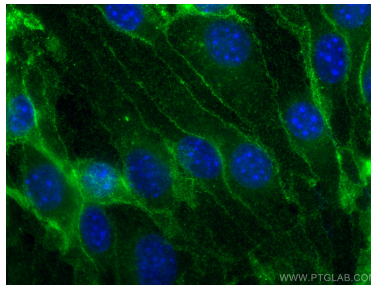
For technical support and original validation data for this product please contact:
T: 1 (888) 4PTGLAB (1-888-478-4522) (toll free in USA), or 1(312) 455-8498 (outside USA)
E: proteintech@ptglab.com
W: ptglab.com

This product is exclusively available under Proteintech Group brand and is not available to purchase from any other manufacturer.

Données de validation sélectionnées



1X10⁶ mouse splenocytes were surface stained with 0.5 ug Anti-Mouse CD31 (65058-1-Ig, Clone:390) and FITC anti-rat IgG2a Antibody at dilution 1:50 (green), or stained with 0.5 ug rat IgG2a isotype control and FITC anti-rat IgG2a Antibody at dilution 1:50 (black). Cells were not fixed.



Immunofluorescent analysis of (4% PFA) fixed bEnd.3 cells using CD31 antibody (65058-1-Ig, Clone: 390) at dilution of 1:100 and CoraLite®488-Conjugated AffiniPure Goat Anti-Rat IgG(H+L).