

À des fins de recherche uniquement

Anticorps Monoclonal anti-CD3ε

Numéro de catalogue: 65060-1-Ig



Informations de base

| | | |
|------------------------------------|--|---|
| Numéro de catalogue: 65060-1-Ig | Numéro d'acquisition GenBank: BC098236 | Méthode de purification: Purification par affinité |
| Taille: 500ug, 0.5 mg/ml | Identification du gène (NCBI): 12501 | CloneNo.: 145-2C11 |
| Hôte: Hamster | Nom complet: CD3 antigen, epsilon polypeptide | Dilutions recommandées: IF 1:250-1:1000 |
| Isotype: IgG | | |

Applications

| | |
|------------------------------------|--|
| Applications testées: FC, IF | Contrôles positifs: IF : splénocytes de souris, |
| Spécificité de l'espèce: souris | |

Informations générales

CD3 is a multimeric protein associated with the T-cell receptor (TCR) to form a complex involved in antigen recognition and signal transduction (PMID: 15885124). CD3 is composed of CD3γ, δ, ε, and ζ chains (PMID: 1826255). It is expressed by thymocytes in a developmentally regulated manner, T cells, and some NK cells (PMID: 3289580). The TCR recognizes antigens bound to major histocompatibility complex (MHC) molecules. TCR-mediated peptide-MHC recognition is transmitted to the CD3 complex, leading to the intracellular signal transduction (PMID: 11985657).

Stockage

Stockage:
Store at 2-8°C. Stable for one year after shipment.
Tampon de stockage:
PBS with 0.09% sodium azide.

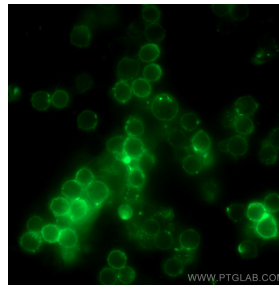
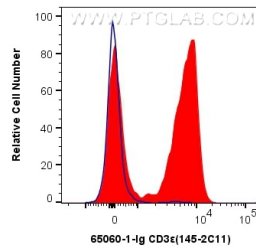
For technical support and original validation data for this product please contact:

T: 1 (888) 4PTGLAB (1-888-478-4522) (toll free in USA), or 1(312) 455-8498 (outside USA)

E: proteintech@ptglab.com
W: ptglab.com

This product is exclusively available under Proteintech Group brand and is not available to purchase from any other manufacturer.

Données de validation sélectionnées



1X10⁶ mouse splenocytes were surface stained with 0.5 ug Anti-Mouse CD3ε (65060-1-Ig, Clone:145-2C11) (red), or 0.5 ug Isotype Control. Cells were not fixed .

Immunofluorescent analysis of mouse splenocytes using CD3ε antibody (65060-1-Ig, Clone: 145-2C11) at dilution of 1:500 and Coralite@488-Conjugated AffiniPure Goat Anti-Mouse IgG(H+L).