

À des fins de recherche uniquement

# Anticorps Monoclonal anti-CD3 $\epsilon$

Numéro de catalogue: 65061-1-Ig



## Informations de base

Numéro de catalogue: 65061-1-Ig	Numéro d'acquisition GenBank: BC098236	Méthode de purification: Purification par affinité
Taille: 500 $\mu$ g, 0.5 mg/ml	Identification du gène (NCBI): 12501	CloneNo.: 500-A2
Hôte: Hamster	Nom complet: CD3 antigen, epsilon polypeptide	
Isotype: IgG		

## Applications

Applications testées:  
FC  
Spécificité de l'espèce:  
souris

## Informations générales

CD3 is a multimeric protein associated with the T-cell receptor (TCR) to form a complex involved in antigen recognition and signal transduction (PMID: 15885124). CD3 is composed of CD3 $\gamma$ ,  $\delta$ ,  $\epsilon$ , and  $\zeta$  chains (PMID: 1826255). It is expressed by thymocytes in a developmentally regulated manner, T cells, and some NK cells (PMID: 3289580). The TCR recognizes antigens bound to major histocompatibility complex (MHC) molecules. TCR-mediated peptide-MHC recognition is transmitted to the CD3 complex, leading to the intracellular signal transduction (PMID: 11985657).

## Stockage

Stockage:  
Store at 2-8°C. Stable for one year after shipment.  
Tampon de stockage:  
Solution saline tamponnée au borate, pH 8,2.

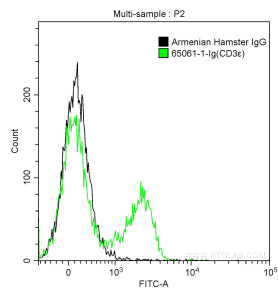
For technical support and original validation data for this product please contact:

T: 1 (888) 4PTGLAB (1-888-478-4522) (toll free  
in USA), or 1(312) 455-8498 (outside USA)

E: [proteintech@ptglab.com](mailto:proteintech@ptglab.com)  
W: [ptglab.com](http://ptglab.com)

This product is exclusively available under Proteintech Group brand and is not available to purchase from any other manufacturer.

## Données de validation sélectionnées



1X10<sup>6</sup> mouse splenocytes were surface stained with 0.5 µg Anti-Mouse CD3ε (65061-1-Ig, Clone: 500-A2) and FITC Goat anti-hamster (Armenian) IgG Antibody at dilution 1:200 (green), or stained with 0.5 µg Armenian Hamster IgG isotype Control and FITC Goat anti-hamster (Armenian) IgG Antibody at dilution 1:200 (black). Cells were not fixed.