

À des fins de recherche uniquement

Anticorps Monoclonal anti-CD16 / CD32



Numéro de catalogue: 65080-1-Ig

1 Publications

Informations de base

Numéro de catalogue:

65080-1-Ig

Taille:

100ug, 0.5 mg/ml

Hôte:

Rat

Isotype:

IgG2b

Numéro d'acquisition GenBank:

BC038070

Identification du gène (NCBI):

14130

Nom complet:

Fc receptor, IgG, low affinity IIb

Méthode de purification:

Purification par affinité

CloneNo.:

2.4G2

Applications

Applications testées:

FC

Demandes citées:

FC

Spécificité de l'espèce:

souris

Espèces citées:

souris

Informations générales

CD16 (FcγRIII) is a 50-70 kDa low affinity Fc receptor found on the surface of natural killer cells, neutrophil polymorphonuclear leukocytes, monocytes and macrophages. CD16 mediates antibody-dependent cellular cytotoxicity (ADCC) and other antibody-dependent responses, such as phagocytosis. CD32 (FcγRII) is a 40 kD transmembrane glycoprotein that binds to the Fc region of IgG with low affinity. CD32 is present on phagocytic cells such as macrophages and neutrophils, and is involved in the process of phagocytosis and clearing of immune complexes. The 2.4G2 antibody reacts with the extracellular domains of mouse CD16 (FcRIII) and CD32 (FcRII) (PMID: 90108; 8406898). Rat anti mouse CD16/CD32 antibody, clone 2.4G2 is specific to the common epitope of CD16 and CD32. It can be used for blocking non-specific binding of immunoglobulins to the Fc receptors.

Publications notables

Autrice	Pubmed ID	Journal	Application
Zefan Liu	37229252	Front Pharmacol	FC

Stockage

Stockage:

Stocker à une température comprise entre 2 °C et 8 °C.

Tampon de stockage:

Tampon à base de phosphate avec azoture de sodium à 0,09 %, pH 7,2.

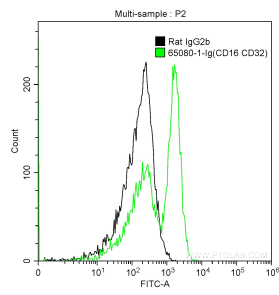
For technical support and original validation data for this product please contact:

T: 1 (888) 4PTGLAB (1-888-478-4522) (toll free in USA), or 1(312) 455-8498 (outside USA)

E: proteintech@ptglab.com
W: ptglab.com

This product is exclusively available under Proteintech Group brand and is not available to purchase from any other manufacturer.

Données de validation sélectionnées



1X10⁶ mouse splenocytes were surface stained with 0.5 ug Anti-Mouse CD16 / CD32 (65080-1-Ig, Clone: 2.4G2) and FITC Anti-Rat IgG2b Antibody at dilution 1:200 (green), or stained with 0.5 ug Rat IgG2b Isotype Control and FITC Anti-Rat IgG2b Antibody at dilution 1:200 (black). Cells were not fixed.