

À des fins de recherche uniquement

Anticorps Monoclonal anti-PD-L1 (B7-H1)



Numéro de catalogue: 65081-1-Ig

Informations de base

Numéro de catalogue: 65081-1-Ig	Numéro d'acquisition GenBank: BC069381	Méthode de purification: Purification par affinité
Taille: 100ug, 0.5 mg/ml	Identification du gène (NCBI): 29126	CloneNo.: 29E.2A3
Hôte: Mouse	Nom complet: CD274 molecule	
Isotype: IgG2b		

Applications

Applications testées:
FC
Spécificité de l'espèce:
Humain

Informations générales

Programmed cell death ligand 1 (PD-L1, CD274, or B7-H1), is the first member of B7 family to be discovered. B7 family molecules are type I transmembrane proteins belonging to the immunoglobulin superfamily. In concert with their CD28 family receptors, the B7s are key regulators of the adaptive immune response. PD-L1 is suggested as a negative regulator of T and B cell, and plays important role in mediating tolerance of lymphocytes to self-antigens. It is also involved in the costimulatory signal, essential for T-cell proliferation and production of IL10 and IFNG, in an IL2-dependent and a PD-1-independent manner.

Stockage

Stockage:
Stocker à une température comprise entre 2 °C et 8 °C.
Tampon de stockage:
Tampon à base de phosphate avec azoture de sodium à 0,09 %, pH 7,2.

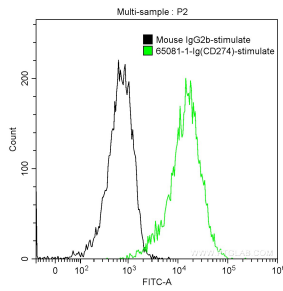
For technical support and original validation data for this product please contact:

T: 1 (888) 4PTGLAB (1-888-478-4522) (toll free
in USA), or 1(312) 455-8498 (outside USA)

E: proteintech@ptglab.com
W: ptglab.com

This product is exclusively available under Proteintech Group brand and is not available to purchase from any other manufacturer.

Données de validation sélectionnées



1X10⁶ PHA-stimulated (5 ug/ml, 3 days) human peripheral blood lymphocytes were surface stained with 0.25 ug Anti-Human PD-L1 (B7-H1) (65081-1-Ig, Clone: 29E.2A3) and CoraLite®488-Conjugated AffiniPure Goat Anti-Mouse IgG(H+L) at dilution 1:1000 (green), or stained with 0.25 ug mouse IgG2b isotype control and CoraLite®488-Conjugated AffiniPure Goat Anti-Mouse IgG(H+L) at dilution 1:1000 (black). Cells were not fixed.