

À des fins de recherche uniquement

# Anticorps Monoclonal anti-CD20

Numéro de catalogue: 65085-1-Ig



## Informations de base

Numéro de catalogue:

65085-1-Ig

Taille:

100ug, 500 µg/ml

Hôte:

Mouse

Isotype:

IgG2b, kappa

Numéro d'acquisition GenBank:

BC002807

Identification du gène (NCBI):

931

Nom complet:

membrane-spanning 4-domains,  
subfamily A, member 1

MW calculé

297 aa, 33 kDa

Méthode de purification:

Purification par affinité

CloneNo.:

2H7

## Applications

Applications testées:

FC

Spécificité de l'espèce:

Humain

## Informations générales

CD20 is a 33-37 kDa transmembrane phosphoprotein belonging to the membrane-spanning 4A family (PMID: 3260267; 16785532). CD20 is a B-lymphocyte surface molecule that is widely expressed during B-cell ontogeny, from early pre-B-cell developmental stages until final differentiation into plasma cells (PMID: 7524522). CD20 functions as calcium-permeable cation channel (PMID: 7684739). It is involved in the regulation of B-cell activation, proliferation and differentiation (PMID: 7524522).

## Stockage

Stockage:

Store at 2-8°C. Stable for one year after shipment.

Tampon de stockage:

PBS with 0.09% sodium azide.

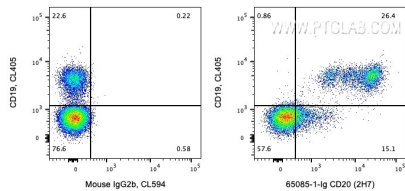
For technical support and original validation data for this product please contact:

T: 1 (888) 4PTGLAB (1-888-478-4522) (toll free  
in USA), or 1(312) 455-8498 (outside USA)

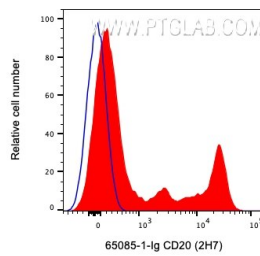
E: [proteintech@ptglab.com](mailto:proteintech@ptglab.com)  
W: [ptglab.com](http://ptglab.com)

This product is exclusively available under Proteintech Group brand and is not available to purchase from any other manufacturer.

## Données de validation sélectionnées



1X10<sup>6</sup> human PBMCs were surface co-stained with CL405 Anti-Human CD19 and 0.5 ug Anti-Human CD20 (65085-1-Ig, Clone: 2H7) and CoraLite®594-Conjugated AffiniPure Goat Anti-Mouse IgG(H+L) at dilution 1:1000 or Isotype Control. Cells were not fixed. Lymphocytes were gated.



1X10<sup>6</sup> human PBMCs were surface stained with 0.5 ug Anti-Human CD73 (65162-1-Ig, Clone:AD2) and CoraLite®594-Conjugated AffiniPure Goat Anti-Mouse IgG(H+L) at dilution 1:1000 (red) or Isotype Control. Cells were not fixed. Lymphocytes were gated.