

À des fins de recherche uniquement

Anticorps Monoclonal anti-CD8a

Numéro de catalogue: 65113-1-Ig



Informations de base

Numéro de catalogue: 65113-1-Ig	Numéro d'acquisition GenBank: BC025715	Méthode de purification: Purification par affinité
Taille: 100ug, 0.5 mg/ml	Identification du gène (NCBI): 925	CloneNo.: Hit8a
Hôte: Mouse	Nom complet: CD8a molecule	
Isotype: IgG1, kappa	MW calculé: 235 aa, 26 kDa	

Applications

Applications testées:
FC

Spécificité de l'espèce:
Humain

Informations générales

CD8 is a transmembrane glycoprotein composed of two disulfide-linked chains. It can be present as a homodimer of CD8a or as a heterodimer of CD8a and CD8β (PMID: 3264320; 8253791). CD8 is found on most thymocytes. The majority of class I-restricted T cells express mostly the CD8aβ heterodimer while CD8aa homodimers alone have been found on some gut intraepithelial T cells, on some T cell receptor (TCR) γδ T cells and on NK cells (PMID: 2111591; 1831127; 8420975). CD8 acts as a co-receptor that binds to MHC class-I and participates in cytotoxic T cell activation (PMID: 8499079). During T cell development, CD8 is required for positive selection of CD4-/CD8+ T cells (PMID: 1968084).

Stockage

Stockage:
Store at 2-8°C. Stable for one year after shipment.

Tampon de stockage:
Tampon à base de phosphate avec azoture de sodium à 0,09 %, pH 7,2.

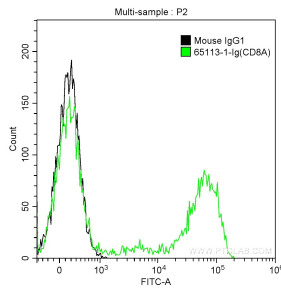
For technical support and original validation data for this product please contact:

T: 1 (888) 4PTGLAB (1-888-478-4522) (toll free in USA), or 1(312) 455-8498 (outside USA)

E: proteintech@ptglab.com
W: ptglab.com

This product is exclusively available under Proteintech Group brand and is not available to purchase from any other manufacturer.

Données de validation sélectionnées



1X10⁶ human peripheral blood lymphocytes were surface stained with 0.25 ug Anti-Human CD8a (65113-1-Ig, Clone: Hit8a) and CoraLite®488-Conjugated AffiniPure Goat Anti-Mouse IgG(H+L) at dilution 1:1000 (green), or stained with 0.25 ug mouse IgG1 isotype control antibody and CoraLite®488-Conjugated AffiniPure Goat Anti-Mouse IgG(H+L) at dilution 1:1000 (black). Cells were not fixed.