

À des fins de recherche uniquement

Anticorps Monoclonal anti-CD161

Numéro de catalogue: 65115-1-Ig



Informations de base

Numéro de catalogue:

65115-1-Ig

Taille:

100ug, 0.5 mg/ml

Hôte:

Mouse

Isotype:

IgG1

Numéro d'acquisition GenBank:

BC114516

Identification du gène (NCBI):

3820

Nom complet:

killer cell lectin-like receptor
subfamily B, member 1

MW calculé

225 aa, 25 kDa

Méthode de purification:

Purification par affinité

CloneNo.:

HP-3G10

Applications

Applications testées:

FC

Spécificité de l'espèce:

Humain

Informations générales

Stockage

Stockage:

Stocker à une température comprise entre 2 °C et 8 °C.

Tampon de stockage:

Tampon à base de phosphate avec azoture de sodium à 0,09 %, pH 7,2.

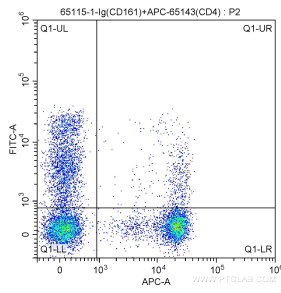
For technical support and original validation data for this product please contact:

T: 1 (888) 4PTGLAB (1-888-478-4522) (toll free
in USA), or 1(312) 455-8498 (outside USA)

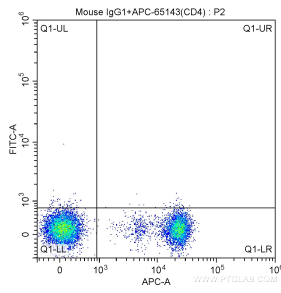
E: proteintech@ptglab.com
W: ptglab.com

This product is exclusively available under Proteintech Group brand and is not available to purchase from any other manufacturer.

Données de validation sélectionnées



1X10⁶ human peripheral blood lymphocytes were surface stained with APC Anti-Human CD4 (APC-65143, Clone: RPA-T4), and 1 ug Anti-Human CD161 (65115-1-Ig, Clone: HP-3G10) and FITC anti-mouse IgG1 antibody at dilution 1:200. Cells were not fixed.



1X10⁶ human peripheral blood lymphocytes were surface stained with APC Anti-Human CD4 (APC-65143, Clone: RPA-T4), and 1 ug mouse IgG1 isotype control and FITC anti-mouse IgG1 antibody at dilution 1:200. Cells were not fixed.