

À des fins de recherche uniquement

# Anticorps Monoclonal anti-CD62L (L-Selectin)



Numéro de catalogue: 65123-1-Ig

1 Publications

## Informations de base

Numéro de catalogue:

65123-1-Ig

Taille:

100ug, 0.5 mg/ml

Hôte:

Rat

Isotype:

IgG2a, kappa

Numéro d'acquisition GenBank:

BC052681

Identification du gène (NCBI):

20343

Nom complet:

selectin, lymphocyte

Méthode de purification:

Purification par affinité

CloneNo.:

MEL-14

## Applications

Applications testées:

FC

Demandes citées:

FC

Spécificité de l'espèce:

souris

Espèces citées:

souris

## Informations générales

L-selectin, also known as SELL or CD62L, is a member of the selectin family of adhesion molecules that includes E-selectin and P-selectin (PMID: 2663882, 2473156, 1382078). L-selectin is a protein with the calculated molecular mass of 42 kDa but actually 95-105 kDa on neutrophils and 74 kDa on lymphocytes because of the highly glycosylation (PMID: 1694883, 1695155). L-selectin is expressed on the surface of most leukocytes, including lymphocytes, neutrophils, monocytes, eosinophils, hematopoietic progenitor cells, and immature thymocytes (PMID: 1694883, 1688580). L-selectin mediates the binding of lymphocytes to high endothelial venules (HEV) of peripheral lymph nodes through interactions with a constitutively expressed ligand, and are also involved in lymphocyte, neutrophil, and monocyte attachment to endothelium at sites of inflammation (PMID: 1382078).

## Publications notables

Autrice	Pubmed ID	Journal	Application
Haoran Wang	35087966	Bioact Mater	FC

## Stockage

Stockage:

Store at 2-8°C. Stable for one year after shipment.

Tampon de stockage:

Tampon à base de phosphate avec azoture de sodium à 0,09 %, pH 7,2.

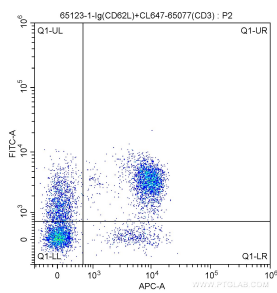
For technical support and original validation data for this product please contact:

T: 1 (888) 4PTGLAB (1-888-478-4522) (toll free in USA), or 1(312) 455-8498 (outside USA)

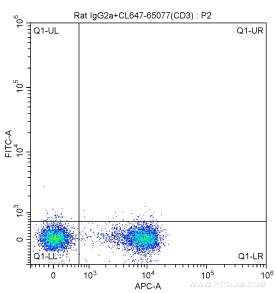
E: [proteintech@ptglab.com](mailto:proteintech@ptglab.com)  
W: [ptglab.com](http://ptglab.com)

This product is exclusively available under Proteintech Group brand and is not available to purchase from any other manufacturer.

## Données de validation sélectionnées



1X10<sup>6</sup> C57BL/6 mouse splenocytes were surface stained with 5 ul CoraLite® Plus 647-conjugated Anti-Mouse CD3 (CL647-65077, Clone: 17A2), and 0.5 ug Anti-Mouse CD62L (L-Selectin) (65123-1-Ig, Clone: MEL-14) and FITC Anti-Rat IgG2a Antibody at dilution 1:200. Cells were not fixed.



1X10<sup>6</sup> C57BL/6 mouse splenocytes were surface stained with 5 ul CoraLite® Plus 647-conjugated Anti-Mouse CD3 (CL647-65077, Clone: 17A2), and 0.5 ug Rat IgG2a Isotype Control and FITC Anti-Rat IgG2a Antibody at dilution 1:200. Cells were not fixed.