

À des fins de recherche uniquement

Anticorps Monoclonal anti-IgG1 Isotype Control



Numéro de catalogue: 65124-1-Ig

Informations de base

Numéro de catalogue:

65124-1-Ig

Taille:

100ug, 0.5 mg/ml

Hôte:

Mouse

Isotype:

IgG1

Numéro d'acquisition GenBank:

Identification du gène (NCBI):

16017

Nom complet:

immunoglobulin heavy constant
gamma 1 (G1m marker)

Méthode de purification:

Purification par affinité

CloneNo.:

MOPC-21

Applications

Applications testées:

FC

Spécificité de l'espèce:

Informations générales

The MOPC-21 immunoglobulin is useful as an isotype-matched control. The MOPC-21 immunoglobulin has an unknown binding specificity and is used as an isotype control for mouse IgG1 antibodies. This antibody has been quality-tested for flow cytometry as negative control.

Stockage

Stockage:

Stocker à une température comprise entre 2 °C et 8 °C.

Tampon de stockage:

Tampon à base de phosphate avec azoture de sodium à 0,09 %, pH 7,2.

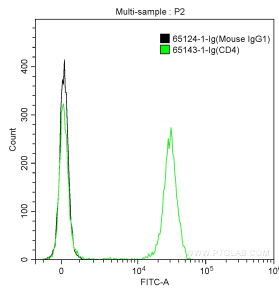
For technical support and original validation data for this product please contact:

T: 1 (888) 4PTGLAB (1-888-478-4522) (toll free
in USA), or 1(312) 455-8498 (outside USA)

E: proteintech@ptglab.com
W: ptglab.com

This product is exclusively available under Proteintech Group brand and is not available to purchase from any other manufacturer.

Données de validation sélectionnées



1X10⁶ human peripheral blood lymphocytes were surface stained with 1 ug Mouse IgG1 Isotype Control (65124-1-Ig, Clone: MOPC-21) and CoraLite®488-Conjugated AffiniPure Goat Anti-Mouse IgG(H+L) at dilution 1:1000 (black), or stained with 1 ug Anti-Human CD4 (65143-1-Ig, Clone: RPA-T4) and CoraLite®488-Conjugated AffiniPure Goat Anti-Mouse IgG(H+L) at dilution 1:1000 (green). Cells were not fixed.