

À des fins de recherche uniquement

# Anticorps Monoclonal anti-CD206

Numéro de catalogue: 65155-1-Ig



## Informations de base

Numéro de catalogue:

65155-1-Ig

Taille:

100ug, 1 mg/ml

Hôte:

Mouse

Isotype:

IgG1, kappa

Numéro d'acquisition GenBank:

NM\_002438

Identification du gène (NCBI):

4360

Nom complet:

mannose receptor, C type 1

MW calculé

166 kDa

Méthode de purification:

Purifié par chromatographie d'affinité par protéine A

CloneNo.:

15-2

## Applications

Applications testées:

FC

Spécificité de l'espèce:

Humain

## Informations générales

CD206, also named as MMR, CLEC13D and MRC1, is a type I membrane receptor that mediates the endocytosis of glycoproteins by macrophages. CD206 has been shown to bind high-mannose structures on the surface of potentially pathogenic viruses, bacteria, and fungi so that they can be neutralized by phagocytic engulfment. CD206 is a 170 kDa transmembrane protein which contains 5 domains: an amino-terminal cysteine-rich region, a fibronectin type II repeat, a series of eight tandem lectin-like carbohydrate recognition domains (responsible for the recognition of mannose and fucose), a transmembrane domain, and an intracellular carboxy-terminal tail. It is expressed on most tissue macrophages, in vitro derived dendritic cells, lymphatic and sinusoidal endothelia.

## Stockage

Stockage:

Store at 2-8°C. Stable for one year after shipment.

Tampon de stockage:

PBS avec azoture de sodium à 0,1 %.

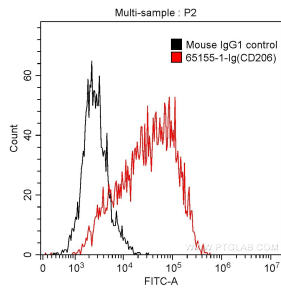
For technical support and original validation data for this product please contact:

T: 1 (888) 4PTGLAB (1-888-478-4522) (toll free in USA), or 1(312) 455-8498 (outside USA)

E: [proteintech@ptglab.com](mailto:proteintech@ptglab.com)  
W: [ptglab.com](http://ptglab.com)

This product is exclusively available under Proteintech Group brand and is not available to purchase from any other manufacturer.

## Données de validation sélectionnées



Human monocyte-derived dendritic cells (monocytes stimulated with GM-CSF and IL-4) were surface stained with 0.5 ug Anti-Human CD206 (65155-1-Ig, Clone:15-2) and CoraLite®488-Conjugated AffiniPure Goat Anti-Mouse IgG(H+L) at dilution 1:1000 (red), or stained with 0.5 ug mouse IgG1 isotype control and CoraLite®488-Conjugated AffiniPure Goat Anti-Mouse IgG(H+L) at dilution 1:1000 (black). Cells were not fixed.