

À des fins de recherche uniquement

Anticorps Monoclonal anti-MICA/MICB



Numéro de catalogue: 65161-1-Ig **3 Publications**

Informations de base

Numéro de catalogue: 65161-1-Ig	Numéro d'acquisition GenBank: BC016929	Méthode de purification: Purifié par chromatographie d'affinité par protéine A
Taille: 100ug, 1 mg/ml	Identification du gène (NCBI): 100507436	CloneNo.: 6D4
Hôte: Mouse	Nom complet: MHC class I polypeptide-related sequence A	
Isotype: IgG2a, kappa	MW calculé 383 aa, 43 kDa	

Applications

Applications testées:
FC

Demandes citées:
WB

Spécificité de l'espèce:
Humain

Espèces citées:
Humain

Informations générales

Human MHC class I chain-related genes located within the HLA class I region of chromosome 6 encode MHC class I chain-related A and B (MICA and MICB) (PMID: 11429322). MICA and MICB are stress-inducible surface molecules that are not associated with β 2-microglobulin and do not present peptides (PMID: 9497295). They are expressed in intestinal epithelium and many epithelial tumors (PMID: 10359807). MICA and MICB are ligands for NKG2D which is an activating receptor that is expressed on most natural killer (NK) cells, CD8 α T cells, and γ δ T cells (PMID: 10426993; 11491531). The monoclonal antibody 6D4 recognizes MICA and MICB.

Publications notables

Autrice	Pubmed ID	Journal	Application
Fei Liu	36497344	Cancers (Basel)	WB
Yang Wang	32349046	J Immunother	WB
Hui-Yang Wu	34999394	Int Immunopharmacol	WB

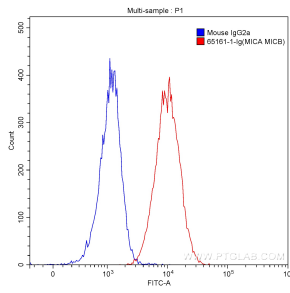
Stockage

Stockage:
Store at 2-8°C. Stable for one year after shipment.
Tampon de stockage:
PBS avec azoture de sodium à 0,1 %.

For technical support and original validation data for this product please contact:
T: 1 (888) 4PTGLAB (1-888-478-4522) (toll free in USA), or 1(312) 455-8498 (outside USA)
E: proteintech@ptglab.com
W: ptglab.com

This product is exclusively available under Proteintech Group brand and is not available to purchase from any other manufacturer.

Données de validation sélectionnées



1X10⁶ HeLa cells were surface stained with 0.20 ug/test Purified Anti-Human MICA/MICB (65161-1-Ig, Clone:6D4) (red) or 0.20 ug Mouse IgG2a Isotype Control (66360-2-Ig, CloneK11A1B2A2) (blue) and CoraLite®488-Conjugated AffiniPure Goat Anti-Mouse IgG(H+L) with dilution 1:1000. Cells were not fixed.