

À des fins de recherche uniquement

Anticorps Monoclonal anti-CD86

Numéro de catalogue: 65165-1-Ig



Informations de base

Numéro de catalogue:

65165-1-Ig

Taille:

100ug, 0.5 mg/ml

Hôte:

Mouse

Isotype:

IgG1, kappa

Numéro d'acquisition GenBank:

BC040261

Identification du gène (NCBI):

942

Nom complet:

CD86 molecule

MW calculé

329 aa, 38 kDa

Méthode de purification:

Purification par protéine A

CloneNo.:

BU63

Dilutions recommandées:

IF 1:500-1:2000

Applications

Applications testées:

FC, IF

Spécificité de l'espèce:

Humain

Contrôles positifs:

IF : cellules Raji,

Informations générales

CD86 (also known as B7.2) is a costimulatory molecule belonging to the immunoglobulin superfamily. Primarily expressed on antigen-presenting cells (APCs), including B cells, dendritic cells, and macrophages, CD86 is the ligand for two proteins at the cell surface of T cells, CD28 antigen and cytotoxic T-lymphocyte-associated protein 4. Binding of CD86 with CD28 antigen is a costimulatory signal for activation of the T-cell. Binding of CD86 with cytotoxic T-lymphocyte-associated protein 4 negatively regulates T-cell activation and diminishes the immune response.

Stockage

Stockage:

Store at 2-8°C. Stable for one year after shipment.

Tampon de stockage:

PBS avec azoture de sodium à 0,1 %.

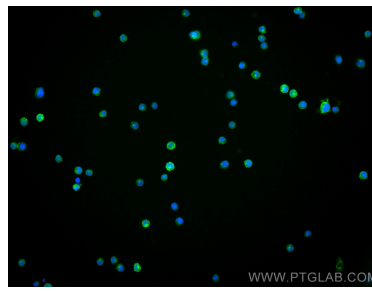
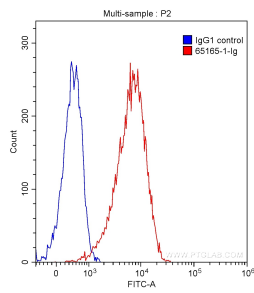
For technical support and original validation data for this product please contact:

T: 1 (888) 4PTGLAB (1-888-478-4522) (toll free in USA), or 1(312) 455-8498 (outside USA)

E: proteintech@ptglab.com
W: ptglab.com

This product is exclusively available under Proteintech Group brand and is not available to purchase from any other manufacturer.

Données de validation sélectionnées



1X10⁶ Daudi cells were surface stained with 0.20 ug Anti-Human CD86 (65165-1-Ig, Clone: BU63) (red) or 0.20 ug isotype control antibody (blue) and CoraLite®488-Conjugated AffiniPure Goat Anti-Mouse IgG(H+L) with dilution of 1:1000. Cells were not fixed.

Immunofluorescent analysis of (4% PFA) fixed Raji cells using CD86 antibody (65165-1-Ig, Clone: BU63) at dilution of 1:1000 and CoraLite®488-Conjugated AffiniPure Goat Anti-Mouse IgG(H+L).