

À des fins de recherche uniquement

Anticorps Monoclonal anti-CD62L

Numéro de catalogue: 65167-1-Ig



Informations de base

Numéro de catalogue:

65167-1-Ig

Taille:

100ug, 1 mg/ml

Hôte:

Mouse

Isotype:

Mouse IgG1

Numéro d'acquisition GenBank:

BC020758

Identification du gène (NCBI):

6402

Nom complet:

selectin L

MW calculé

42 kDa

Méthode de purification:

Purifié par chromatographie d'affinité par protéine A

CloneNo.:

DREG56

Applications

Applications testées:

FC

Spécificité de l'espèce:

Humain

Informations générales

CD62L, also known as L-selectin or SELL, is a member of the selectin family of adhesion molecules that also include CD62E (E-selectin) and CD62P (P-selectin) (PMID: 2663882, 2473156, 1382078). CD62L is a highly glycosylated protein of 95-105 kDa on neutrophils and 74 kDa on lymphocytes (PMID: 1382078; 1694883, 1695155). CD62L is expressed on the surface of most leukocytes, including lymphocytes, neutrophils, monocytes, eosinophils, hematopoietic progenitor cells, and immature thymocytes (PMID: 1694883, 1688580). It mediates the binding of lymphocytes to high endothelial venules (HEV) of peripheral lymph nodes through interactions with a constitutively expressed ligand, and is also involved in lymphocyte, neutrophil, and monocyte attachment to endothelium at sites of inflammation (PMID: 1382078).

Stockage

Stockage:

Stocker à une température comprise entre 2 °C et 8 °C.

Tampon de stockage:

PBS avec azoture de sodium à 0,1 %.

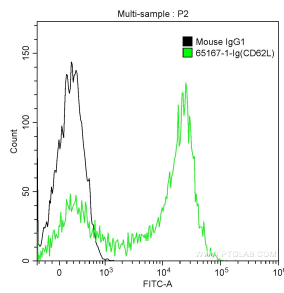
For technical support and original validation data for this product please contact:

T: 1 (888) 4PTGLAB (1-888-478-4522) (toll free in USA), or 1(312) 455-8498 (outside USA)

E: proteintech@ptglab.com
W: ptglab.com

This product is exclusively available under Proteintech Group brand and is not available to purchase from any other manufacturer.

Données de validation sélectionnées



1X10⁶ human peripheral blood lymphocytes were surface stained with 0.5 ug Anti-Human CD62L (65167-1-Ig, Clone: DREG56) (green) or 0.5 ug isotype control antibody (black), and CoraLite@488-Conjugated AffiniPure Goat Anti-Mouse IgG(H+L). Cells were not fixed.