

À des fins de recherche uniquement

Anticorps Monoclonal anti-CDK1

Numéro de catalogue: 65182-1-Ig



Informations de base

Numéro de catalogue:

65182-1-Ig

Taille:

100ug, 1 mg/ml

Hôte:

Mouse

Isotype:

IgG2a, kappa

Numéro d'acquisition GenBank:

BC014563

Identification du gène (NCBI):

983

Nom complet:

cell division cycle 2, G1 to S and G2 to

M

MW calculé

25 kDa

MW observés:

30-34 kDa

Méthode de purification:

Purifié par chromatographie d'affinité par protéine A

CloneNo.:

POH-1

Dilutions recommandées:

WB 1:500-1:2000

Applications

Applications testées:

FC (Intra), WB

Spécificité de l'espèce:

bovin, Humain

Contrôles positifs:

WB : cellules A431, cellules HEK-293, cellules HeLa, cellules K-562

Informations générales

CDK1, also named as CDC2, belongs to the protein kinase superfamily, CMGC Ser/Thr protein kinase family and CDC2/CDKX subfamily. CDK1 plays a key role in the control of the eukaryotic cell cycle. It is required in higher cells for entry into S-phase and mitosis. CDK1 is a catalytic subunit of the highly conserved protein kinase complex known as M-phase promoting factor (MPF), which is essential for G1/S and G2/M phase transitions of eukaryotic cell cycle. It is a component of the kinase complex that phosphorylates the repetitive C-terminus of RNA polymerase II. Mitotic cyclins stably associate with CDK1 and function as regulatory subunits. CDK1 has 2 isoforms produced by alternative splicing with the molecular mass of 34 kDa and 27 kDa.

Stockage

Stockage:

Store at 2-8°C. Stable for one year after shipment.

Tampon de stockage:

PBS avec azoture de sodium à 0,1 %.

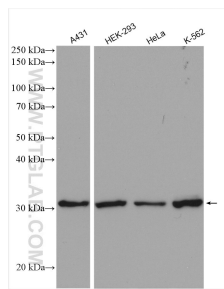
For technical support and original validation data for this product please contact:

T: 1 (888) 4PTGLAB (1-888-478-4522) (toll free in USA), or 1(312) 455-8498 (outside USA)

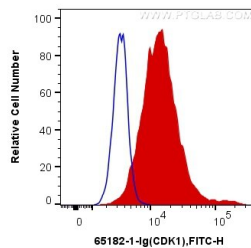
E: proteintech@ptglab.com
W: ptglab.com

This product is exclusively available under Proteintech Group brand and is not available to purchase from any other manufacturer.

Données de validation sélectionnées



Various lysates were subjected to SDS PAGE followed by western blot with 65182-1-Ig (CDK1 antibody) at dilution of 1:1000 incubated at room temperature for 1.5 hours.



1×10^6 HeLa cells were intracellularly stained with 1 μ g Anti-Human CDK1 (65182-1-Ig, Clone:POH-1) and CoraLite[®]488-Conjugated AffiniPure Goat Anti-Mouse IgG(H+L) at dilution 1:1000 (red), or 1 μ g Mouse IgG2a Isotype Control (66360-2-Ig, Clone: K11A1B2A2) and CoraLite[®]488-Conjugated AffiniPure Goat Anti-Mouse IgG(H+L) at dilution 1:1000 (blue). Cells were fixed with 4% PFA and permeabilized with Intracellular Staining Permeabilization Wash Buffer.