

À des fins de recherche uniquement

Anticorps Monoclonal anti-CD18

Numéro de catalogue: 65190-1-Ig



Informations de base

Numéro de catalogue: 65190-1-Ig	Numéro d'acquisition GenBank: BC005861	Méthode de purification: Purification par protéine G
Taille: 100ug, 500 µg/ml	Identification du gène (NCBI): 3689	CloneNo.: TS1/18
Hôte: Mouse	Nom complet: integrin, beta 2 (complement component 3 receptor 3 and 4 subunit)	
Isotype: IgG1, kappa	MW calculé 85 kDa	

Applications

Applications testées:
FC

Spécificité de l'espèce:
Humain

Informations générales

CD18, also known as integrin beta-2, is a transmembrane protein that forms heterodimers with CD11a, CD11b, CD11c, CD11d (PMID: 1968349). CD11a/CD18 (LFA-1) is expressed by all leukocytes, while CD11b/CD18 (Mac-1) and CD11c/CD18 (p150,95) are normally restricted to expression on monocytes, macrophages, polymorphonuclear lymphocytes (PMNs), and natural killer cells (PMID: 1968349; 3109455; 10946284). CD18 plays an important role in mediating cell adhesion during immune response and defects of CD18 cause leukocyte adhesion deficiency (PMID: 3594570).

Stockage

Stockage:
Store at 2-8°C. Stable for one year after shipment.

Tampon de stockage:
PBS with 0.09% sodium azide.

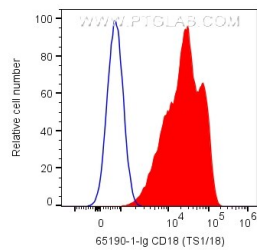
For technical support and original validation data for this product please contact:

T: 1 (888) 4PTGLAB (1-888-478-4522) (toll free in USA), or 1(312) 455-8498 (outside USA)

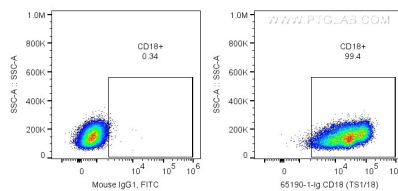
E: proteintech@ptglab.com
W: ptglab.com

This product is exclusively available under Proteintech Group brand and is not available to purchase from any other manufacturer.

Données de validation sélectionnées



1X10⁶ human PBMCs were surface stained with 0.2 ug Anti-Human CD18 (65190-1-Ig, Clone:TS1/18) and CoraLite®488-Conjugated AffiniPure Goat Anti-Mouse IgG(H+L) at dilution 1:1000 (red), or CoraLite®488-Conjugated Mouse IgG1 Isotype Control. Cells were not fixed. Lymphocytes were gated.



1X10⁶ human PBMCs were surface stained with 0.2 ug Anti-Human CD18 (65190-1-Ig, Clone:TS1/18) and CoraLite®488-Conjugated AffiniPure Goat Anti-Mouse IgG(H+L) at dilution 1:1000, or CoraLite®488-Conjugated Mouse IgG1 Isotype Control. Cells were not fixed. Lymphocytes were gated.