

À des fins de recherche uniquement

Anticorps Monoclonal anti-CD2

Numéro de catalogue: 65192-1-Ig



Informations de base

Numéro de catalogue: 65192-1-Ig	Numéro d'acquisition GenBank: BC033583	Méthode de purification: Purification par protéine A
Taille: 100ug, 500 µg/ml	Identification du gène (NCBI): 914	CloneNo.: TS1/8
Hôte: Mouse	Nom complet: CD2 molecule	
Isotype: IgG1, kappa	MW calculé: 351 aa, 39 kDa	

Applications

Applications testées:
FC
Spécificité de l'espèce:
Humain

Informations générales

CD2 is a cell surface glycoprotein present on a majority of thymocytes, all mature T cells and subset of NK cells but not on B lymphocytes. It is a pan T-cell marker. CD2 interacts with lymphocyte function-associated antigen (LFA-3/CD58) and CD48/BCM1 to mediate adhesion between T-cells and other cell types. CD2 is implicated in the triggering of T-cells, the cytoplasmic domain is implicated in the signaling function.

Stockage

Stockage:
Store at 2-8°C. Stable for one year after shipment.
Tampon de stockage:
PBS with 0.09% sodium azide.

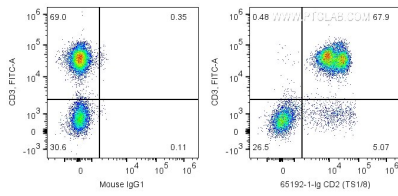
For technical support and original validation data for this product please contact:

T: 1 (888) 4PTGLAB (1-888-478-4522) (toll free
in USA), or 1(312) 455-8498 (outside USA)

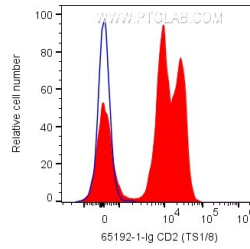
E: proteintech@ptglab.com
W: ptglab.com

This product is exclusively available under Proteintech Group brand and is not available to purchase from any other manufacturer.

Données de validation sélectionnées



1X10⁶ human PBMCs were surface co-stained with FITC anti-Human CD3 and 0.2 ug Anti-Human CD2 (65192-1-Ig, Clone:TS1/8) labeled with FlexAble CoraLite® Plus 647 Antibody Labeling Kit for Mouse IgG1 (KFA023) or Mouse IgG1 Isotype Control. Cells were not fixed. Lymphocytes were gated.



1X10⁶ human PBMCs were surface stained with 0.2 ug Anti-Human CD2 (65192-1-Ig, Clone:TS1/8) labeled with FlexAble CoraLite® Plus 647 Antibody Labeling Kit for Mouse IgG1 (KFA023) or Mouse IgG1 Isotype Control. Cells were not fixed. Lymphocytes were gated.