

À des fins de recherche uniquement

# Anticorps Monoclonal anti-CD11c

Numéro de catalogue: 65196-1-Ig



## Informations de base

Numéro de catalogue:

65196-1-Ig

Taille:

100ug, 500 µg/ml

Hôte:

Mouse

Isotype:

IgG1, kappa

Numéro d'acquisition GenBank:

BC038237

Identification du gène (NCBI):

3687

Nom complet:

integrin, alpha X (complement component 3 receptor 4 subunit)

MW calculé

1169 aa, 129 kDa

Méthode de purification:

Purification par protéine G

CloneNo.:

BU15

## Applications

Applications testées:

FC

Spécificité de l'espèce:

Humain

## Informations générales

Integrins are cell adhesion receptors that are heterodimers composed of non-covalently associated  $\alpha$  and  $\beta$  subunits (PMID: 9779984). CD11c, also known as integrin  $\alpha X$ , is a type I transmembrane glycoprotein present on a variety of cells, including monocytes/macrophages, granulocytes, a subset of B cells, NK cells and dendritic cells (PMID: 2897326; 1680915; 1694698; 17389580). As a result of its high level of expression on most dendritic cells, CD11c is typically considered to be a marker of conventional dendritic cells (PMID: 27119555). CD11c forms an  $\alpha/\beta$  heterodimer with CD18 (integrin  $\beta 2$ ). CD11c/CD18 acts a receptor for fibrinogen and is important in monocyte adhesion and chemotaxis (PMID: 1671533).

## Stockage

Stockage:

Store at 2-8°C. Stable for one year after shipment.

Tampon de stockage:

PBS with 0.09% sodium azide.

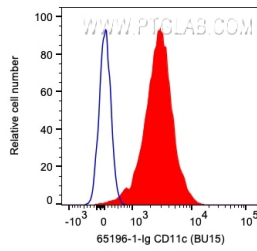
For technical support and original validation data for this product please contact:

T: 1 (888) 4PTGLAB (1-888-478-4522) (toll free in USA), or 1(312) 455-8498 (outside USA)

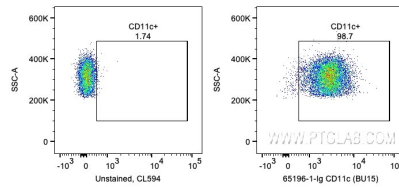
E: [proteintech@ptglab.com](mailto:proteintech@ptglab.com)  
W: [ptglab.com](http://ptglab.com)

This product is exclusively available under Proteintech Group brand and is not available to purchase from any other manufacturer.

## Données de validation sélectionnées



1X10<sup>6</sup> human PBMCs were surface stained with 0.2 ug Anti-Human CD11c (65196-1-Ig, Clone:BU15) and CoraLite®594-Conjugated AffiniPure Goat Anti-Mouse IgG(H+L) at dilution 1:1000 (red) or unstained. Cells were not fixed. Monocytes were gated.



1X10<sup>6</sup> human PBMCs were surface stained with 0.2 ug Anti-Human CD11c (65196-1-Ig, Clone:BU15) and CoraLite®594-Conjugated AffiniPure Goat Anti-Mouse IgG(H+L) at dilution 1:1000 or unstained. Cells were not fixed. Monocytes were gated.