

À des fins de recherche uniquement

Anticorps Monoclonal anti-IgG2b Isotype Control



Numéro de catalogue: 65211-1-Ig **1 Publications**

Informations de base

Numéro de catalogue:

65211-1-Ig

Taille:

500ug, 0.5 mg/mL

Hôte:

Rat

Isotype:

IgG2b

Numéro d'acquisition GenBank:

Identification du gène (NCBI):

Nom complet:

Méthode de purification:

Purification par affinité

CloneNo.:

LTF-2

Applications

Applications testées:

FC

Spécificité de l'espèce:

Informations générales

The LTF-2 immunoglobulin is useful as an isotype-matched control. The LTF-2 immunoglobulin has an unknown binding specificity and is used as an isotype control for rat IgG2b antibodies. This antibody has been quality-tested for flow cytometry as negative control.

Publications notables

Autrice

Pubmed ID

Journal

Application

Xinzhi Li

34893641

Nat Commun

Stockage

Stockage:

Stocker à une température comprise entre 2 °C et 8 °C.

Tampon de stockage:

Tampon à base de phosphate avec azoture de sodium à 0,09 %, pH 7,2.

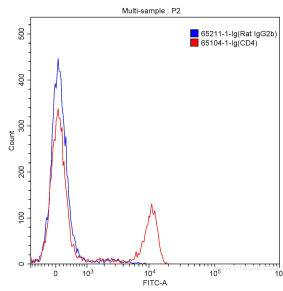
For technical support and original validation data for this product please contact:

T: 1 (888) 4PTGLAB (1-888-478-4522) (toll free
in USA), or 1(312) 455-8498 (outside USA)

E: proteintech@ptglab.com
W: ptglab.com

This product is exclusively available under Proteintech Group brand and is not available to purchase from any other manufacturer.

Données de validation sélectionnées



1X10⁶ BALB/c mouse splenocytes were surface stained with 0.5 ug Rat IgG2b Isotype Control (65211-1-Ig, Clone: LTF-2) (blue) and Fluorescein (FITC)-conjugated Affinipure Goat Anti-Rat IgG(H+L) at dilution of 1:1000, or with 0.5 ug Anti-Mouse CD4 (65104-1-Ig, Clone: GK1.5) (red) and Fluorescein (FITC)-conjugated Affinipure Goat Anti-Rat IgG(H+L) at dilution of 1:1000. Cells were not fixed.