

À des fins de recherche uniquement

Anticorps Monoclonal anti-CD80

Numéro de catalogue: 65217-1-Ig



Informations de base

Numéro de catalogue: 65217-1-Ig	Numéro d'acquisition GenBank: XM_017597885	Méthode de purification: Purification par protéine G
Taille: 100ug, 0.5 mg/ml	Identification du gène (NCBI): 25408	CloneNo.: 3H5
Hôte: Mouse	Nom complet: Cd80 molecule	
Isotype: IgG1, kappa	MW calculé: 36 kDa	

Applications

Applications testées:
FC

Spécificité de l'espèce:
rat

Informations générales

CD80 (also known as B7-1) is a type I membrane protein that is a member of the immunoglobulin superfamily, with an extracellular immunoglobulin constant-like domain and a variable-like domain required for receptor binding. It is expressed on antigen-presenting cells (APCs), including B cells, dendritic cells, monocytes, and macrophages. CD80 is the receptor for the proteins CD28 and CTLA-4 found on the surface of T-cells. It is involved in the costimulatory signal essential for T-lymphocyte activation. T-cell proliferation and cytokine production is induced by the binding of CD28, binding to CTLA-4 has opposite effects and inhibits T-cell activation. CD80 also acts as a cellular attachment receptor for adenovirus subgroup B. (PMID: 7545666; 12015893; 16920215)

Stockage

Stockage:
Store at 2-8°C. Stable for one year after shipment.

Tampon de stockage:
PBS with 0.09% sodium azide.

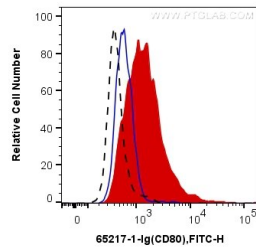
For technical support and original validation data for this product please contact:

T: 1 (888) 4PTGLAB (1-888-478-4522) (toll free in USA), or 1(312) 455-8498 (outside USA)

E: proteintech@ptglab.com
W: ptglab.com

This product is exclusively available under Proteintech Group brand and is not available to purchase from any other manufacturer.

Données de validation sélectionnées



1X10⁶ unstimulated (dashed) or LPS-stimulated Wistar rat splenocytes were surface stained with 1 ug Anti-Rat CD80 (65217-1-Ig, Clone:3H5) and FITC anti-Mouse IgG1 Antibody at dilution 1:100 (red), or 1 ug Control Antibody. Cells were not fixed.