

À des fins de recherche uniquement

# Anticorps Monoclonal anti-ALCAM

Numéro de catalogue: 65223-1-Ig



## Informations de base

Numéro de catalogue: 65223-1-Ig	Numéro d'acquisition GenBank: BC057809	Méthode de purification: Purification par affinité
Taille: 100ug, 0.5 mg/mL	Identification du gène (NCBI): 214	CloneNo.: 3A6
Hôte: Mouse	Nom complet: activated leukocyte cell adhesion molecule	
Isotype: IgG1, kappa	MW calculé 105 kDa	

## Applications

Applications testées:  
FC

Spécificité de l'espèce:  
Humain

## Informations générales

Activated leukocyte cell adhesion molecule (ALCAM, also known as CD166) is a cell adhesion molecule that belongs to the immunoglobulin superfamily. It is involved in cell-cell adhesion through homophilic and heterophilic (to CD6) interactions. ALCAM is widely expressed in a variety of normal tissues and cell types, including activated T cells and monocytes, epithelial cells, fibroblasts, neuronal cells, hepatocytes, and bone marrow mesenchymal stem cells (PMID: 7760007; 25221999). Altered ALCAM expression has been associated with the differentiation state and progression in some neoplasms including melanoma, prostate, colorectal, and breast cancers (PMID: 20461761; 18172759).

## Stockage

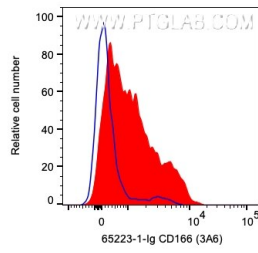
Stockage:  
Store at 2-8°C. Stable for one year after shipment.

Tampon de stockage:  
PBS with 0.09% sodium azide.

For technical support and original validation data for this product please contact:  
T: 1 (888) 4PTGLAB (1-888-478-4522) (toll free in USA), or 1(312) 455-8498 (outside USA)      E: proteintech@ptglab.com  
W: ptglab.com

This product is exclusively available under Proteintech Group brand and is not available to purchase from any other manufacturer.

## Données de validation sélectionnées



1X10<sup>6</sup> PHA treated human PBMCs were surface stained with 0.2 ug Anti-Human ALCAM (65223-1-Ig, Clone:3A6) and CL594-Goat anti-Mouse IgG at dilution 1:1000 (red) or unstained (blue). Cells were not fixed. Monocytes were gated.