

À des fins de recherche uniquement

Anticorps Monoclonal anti-CD85j / LILRB1



Numéro de catalogue: 65238-1-Ig

Informations de base

Numéro de catalogue:

65238-1-Ig

Taille:

100ug, 0.5 mg/mL

Hôte:

Mouse

Isotype:

IgG2b, kappa

Numéro d'acquisition GenBank:

BC015731

Identification du gène (NCBI):

10859

Nom complet:

leukocyte immunoglobulin-like
receptor, subfamily B (with TM and
ITIM domains), member 1

MW calculé

71 kDa

Méthode de purification:

Purification par affinité

CloneNo.:

GHI/75

Applications

Applications testées:

FC

Spécificité de l'espèce:

Humain

Informations générales

Stockage

Stockage:

Store at 2-8°C. Stable for one year after shipment.

Tampon de stockage:

PBS with 0.09% sodium azide.

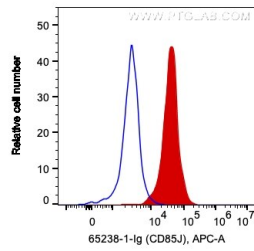
For technical support and original validation data for this product please contact:

T: 1 (888) 4PTGLAB (1-888-478-4522) (toll free
in USA), or 1(312) 455-8498 (outside USA)

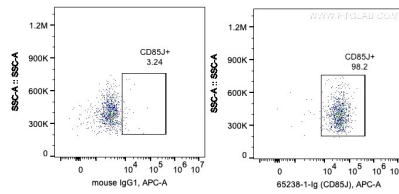
E: proteintech@ptglab.com
W: ptglab.com

This product is exclusively available under Proteintech Group brand and is not available to purchase from any other manufacturer.

Données de validation sélectionnées



1X10⁶ PBMC were surface stained with 0.2 ug Anti-Human LLRB1 (65238-1-Ig, Clone: GHI/75) and APC-Donkey anti-Mouse IgG at dilution 1:1000 (red), or 0.2 ug Mouse IgG1 Isotype Control (66360-1-Ig, Clone: T1F8D3F10) (blue). Monocytes are gated. Cells were not fixed.



1X10⁶ PBMC were surface stained with 0.2 ug Anti-Human LLRB1 (65238-1-Ig, Clone: GHI/75) and APC-Donkey anti-Mouse IgG at dilution 1:1000, or 0.2 ug Mouse IgG1 Isotype Control (66360-1-Ig, Clone: T1F8D3F10). Monocytes are gated. Cells were not fixed.