

À des fins de recherche uniquement

Anticorps Monoclonal anti-CD26

Numéro de catalogue: 65267-1-Ig



Informations de base

Numéro de catalogue: 65267-1-Ig	Numéro d'acquisition GenBank: BC013329	Méthode de purification: Purification par affinité
Taille: 100ug, 0.5 mg/mL	Identification du gène (NCBI): 1803	CloneNo.: BA5b
Hôte: Mouse	Nom complet: dipeptidyl-peptidase 4	
Isotype: IgG2a, kappa	MW calculé: 88 kDa	

Applications

Applications testées:
FC
Spécificité de l'espèce:
Humain

Informations générales

CD26, also known as DPP4 (dipeptidyl peptidase-4), is a 110 kDa type II cell-surface glycoprotein widely expressed on T cells, activated B cells, activated NK cells and myeloid cells as well as on epithelial cells, fibroblasts, mesothelium, and endothelial cells of a variety of tissues (PMID:33777580; 26919392). It has ecto-enzyme activity in its extracellular domain and cleaves amino-terminal dipeptides with either L-proline or L-alanine at the penultimate position (PMID: 9553764). CD26 plays roles in diverse biological processes such as immunoregulation, glucose homeostasis, and tumorigenesis (PMID: 33777580).

Stockage

Stockage:
Store at 2-8°C. Stable for one year after shipment.
Tampon de stockage:
PBS with 0.09% sodium azide.

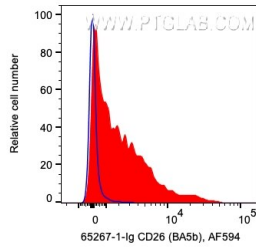
For technical support and original validation data for this product please contact:

T: 1 (888) 4PTGLAB (1-888-478-4522) (toll free
in USA), or 1(312) 455-8498 (outside USA)

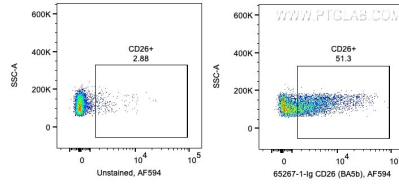
E: proteintech@ptglab.com
W: ptglab.com

This product is exclusively available under Proteintech Group brand and is not available to purchase from any other manufacturer.

Données de validation sélectionnées



1X10⁶ human PBMCs were surface stained with 0.2 ug Anti-Human CD26 (65267-1-Ig, Clone:BA5b) and CoraLite®594-Conjugated AffiniPure Goat Anti-Mouse IgG(H+L) at dilution 1:1000. Cells were not fixed. Lymphocytes were gated.



1X10⁶ human PBMCs were surface stained with 0.2 ug Anti-Human CD26 (65267-1-Ig, Clone:BA5b) and CoraLite®594-Conjugated AffiniPure Goat Anti-Mouse IgG(H+L) at dilution 1:1000. Cells were not fixed. Lymphocytes were gated.