

À des fins de recherche uniquement

Anticorps Monoclonal anti-Beta Actin



Numéro de catalogue: 66009-1-Ig

Phare

4763 Publications

Informations de base

Numéro de catalogue:

66009-1-Ig

Numéro d'acquisition GenBank:

NM_001101

Méthode de purification:

Purification par protéine A

Taille:

150ul, Concentration: 1000 µg/ml by 60

Identification du gène (NCBI):

60

CloneNo.:

2D4H5

Nanodrop;

Nom complet:

actin, beta

Dilutions recommandées:

WB 1:20000-1:100000

Hôte:

Mouse

MW calculé

IP 0.5-4.0 µg for IP and 1:5000-1:50000

Isotype:

IgG2b

42 kDa

for WB

MW observés:

42 kDa

IHC 1:20-1:2000

IF 1:500-1:2000

Applications

Applications testées:

FC, IF, IHC, IP, WB, ELISA

Contrôles positifs:

WB : cellules HeLa, cellules 4T1, cellules A549, cellules CHO, cellules HEK-293, cellules HepG2, cellules Jurkat, cellules K-562, cerveau de lapin, cerveau de porc, cerveau de poulet, cerveau de rat, cerveau de souris, pancréas de rat, pancréas de souris

Demandes citées:

ChIP, CoIP, ELISA, IF, IHC, IP, WB

IP : cellules HeLa,

Spécificité de l'espèce:

chien, Humain, Lapin, poisson-zèbre, porc, poulet, rat, singe, souris, Hamster

IHC : tissu rénal humain, tissu cardiaque humain, tissu cérébral humain, tissu de cancer du côlon humain

Espèces citées:

Chèvre, Humain, Lapin, poulet, rat, singe, souris, arabidopsis

IF : cellules MDCK, cellules HeLa

Remarque-IHC: il est suggéré de démasquer l'antigène avec un tampon de TE buffer pH 9,0; (*) A défaut, 'le démasquage de l'antigène peut être effectué avec un tampon citrate pH 6,0.

Informations générales

Actins are highly conserved globular proteins that are involved in various types of cell motility and are ubiquitously expressed in all eukaryotic cells. At least six isoforms of actins are known in mammals and other vertebrates: alpha (ACTC1, cardiac muscle 1), alpha 1 (ACTA1, skeletal muscle) and 2 (ACTA2, aortic smooth muscle), beta (ACTB), gamma 1 (ACTG1) and 2 (ACTG2, enteric smooth muscle). Beta and gamma 1 are two non-muscle actin proteins. Most actins consist of 376aa, while ACTG2 (rich in muscles) has 375aa and ACTG1(found in non-muscle cells) has only 374aa. Beta actin has been widely used as the internal control in RT-PCR and Western Blotting as a 42-kDa protein. However, the 41 kDa cleaved fragment of beta actin can be generated during apoptosis process. This antibody can recognize all the actins. The isotype of this antibody is IgG2b. For murine tissue sample, conjugated antibody (HRP-66009) or rabbit antibody (20536-1-AP) is preferable.

Publications notables

Autrice	Pubmed ID	Journal	Application
Yu Chen	36240716	Tissue Cell	WB
Yueke Lin	36178239	EMBO Rep	WB
Xin Wen	36249018	Front Oncol	WB

Stockage

Stockage:

Stocker à -20°C. Stable pendant un an après l'expédition.

Tampon de stockage:

PBS avec azoture de sodium à 0,02 % et glycérol à 50 % pH 7,3

L'aliquotage n'est pas nécessaire pour le stockage à -20C

*** Les 20ul contiennent 0,1% de BSA.

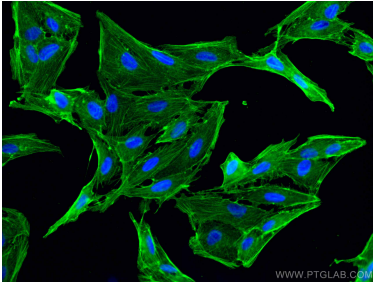
For technical support and original validation data for this product please contact:

T: 1 (888) 4PTGLAB (1-888-478-4522) (toll free in USA), or 1(312) 455-8498 (outside USA)

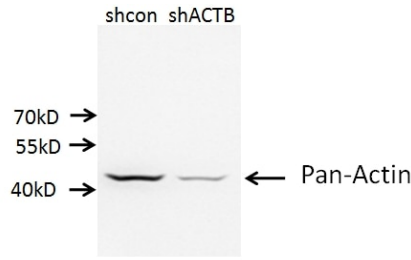
E: proteintech@ptglab.com
W: ptglab.com

This product is exclusively available under Proteintech Group brand and is not available to purchase from any other manufacturer.

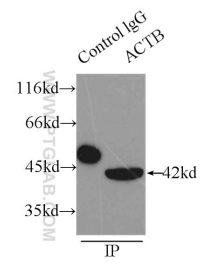
Données de validation sélectionnées



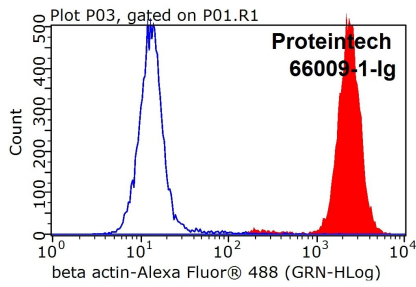
Immunofluorescent analysis of (-20°C Methanol) fixed MDCK cells using Beta Actin antibody (66009-1-Ig, Clone: 2D4H5) at dilution of 1:1000 and CoraLite@488-Conjugated AffiniPure Goat Anti-Mouse IgG(H+L).



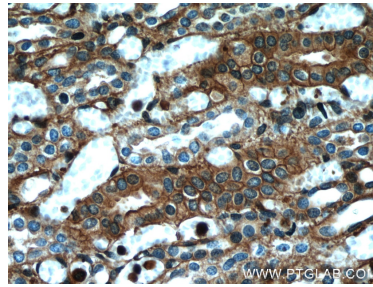
A549 cells (shcontrol and shRNA of Beta Actin) were subjected to SDS PAGE followed by western blot with 66009-1-Ig (Mouse anti Pan-actin antibody) at dilution of 1:10000.



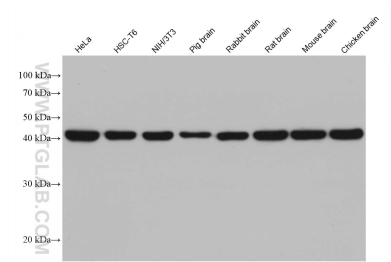
IP Result of anti-beta actin (IP:66009-1-Ig, 3ug; Detection:66009-1-Ig 1:10000) with HeLa cells lysate 3100ug.



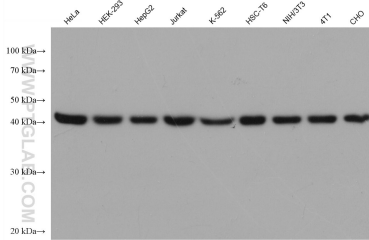
1X10⁶ HeLa cells were stained with 0.05 ug Anti-Human Beta Actin (66009-1-Ig, Clone:2D4H5) and FITC-Goat anti-mouse IgG at dilution 1:100 (red), or stained with 0.05 ug isotype control and FITC-Goat anti-mouse IgG at dilution 1:100 (blue). Cells were fixed with 4% PFA and permeabilized with 0.1% TritonX-100.



Immunohistochemical analysis of paraffin-embedded human kidney using 66009-1-Ig at dilution of 1:500 (under 40x lens).



Various lysates were subjected to SDS PAGE followed by western blot with 66009-1-Ig (Beta Actin antibody) at dilution of 1:100000 incubated at room temperature for 1.5 hours.



Various lysates were subjected to SDS PAGE followed by western blot with 66009-1-Ig (Beta Actin antibody) at dilution of 1:200000 incubated at room temperature for 1.5 hours.