

À des fins de recherche uniquement

Anticorps Monoclonal anti-SEC5/EXOC2



Numéro de catalogue: 66011-1-Ig

Phare

5 Publications

Informations de base

Numéro de catalogue:

66011-1-Ig

Numéro d'acquisition GenBank:

BC016918

Méthode de purification:

Purification par protéine A

Taille:

150ul, Concentration: 1700 µg/ml by 55770

Identification du gène (NCBI):

1C11G2

Nanodrop and 1220 µg/ml by Bradford method using BSA as the standard;

Nom complet:

exocyst complex component 2

CloneNo.:

1C11G2

Dilutions recommandées:

WB 1:2500-1:10000

IP 0.5-4.0 ug for IP and 1:500-1:1000

for WB

IHC 1:200-1:800

IF 1:200-1:800

Hôte:

Mouse

MW calculé

924 aa, 104 kDa

Isotype:

IgG2b

MW observés:

100 kDa

Immunogen Catalog Number:

AG17866

Applications

Applications testées:

IF, IHC, IP, WB, ELISA

Demandes citées:

IF, WB

Spécificité de l'espèce:

Humain, porc, rat, souris

Espèces citées:

Humain

Remarque-IHC: il est suggéré de démasquer l'antigène avec un tampon de TE buffer pH 9,0; (*) À défaut, 'le démasquage de l'antigène peut être 'effectué avec un tampon citrate pH 6,0.

Contrôles positifs:

WB : tissu cérébral de souris, cellules HEK-293, tissu cérébral de porc, tissu cérébral de rat, tissu cérébral humain, tissu de cervelet de porc, tissu de cervelet de rat

IP : tissu cérébral de souris,

IHC : tissu de cancer du sein humain, tissu de cancer du foie humain

IF : cellules HeLa, cellules MDA-MB-231

Informations générales

EXOC2 (exocyst complex component 2), also known as SEC5 and SEC5L1, is a component of the exocyst complex, and is required to mediate RalB-dependent survival signals in transformed cells. The exocyst complex, composed of eight evolutionarily conserved subunits (SEC3, SEC5, SEC6, SEC8, SEC10, SEC15, EXO70, and EXO84), is involved in tethering post-Golgi secretory vesicles to specific plasma membrane domains. The gene of EXOC2 maps to chromosome 6p25.3, and encodes a 924-amino acid protein with an experimentally determined molecular mass of 95-100 kDa. EXOC2 mRNA is widely expressed with highest levels in brain and placenta.

Publications notables

Autrice	Pubmed ID	Journal	Application
Hong-Ling Wang	26359301	J Cell Sci	
Tanmoy Saha	34795441	Nat Nanotechnol	WB,IF
I M Gonzalez	24856041	Placenta	WB,IF

Stockage

Stockage:

Stocker à -20°C. Stable pendant un an après l'expédition.

Tampon de stockage:

PBS avec azoture de sodium à 0,02 % et glycérol à 50 % pH 7,3

L'aliquotage n'est pas nécessaire pour le stockage à -20C

*** Les 20ul contiennent 0,1% de BSA.

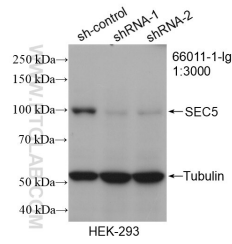
For technical support and original validation data for this product please contact:

T: 1 (888) 4PTGLAB (1-888-478-4522) (toll free in USA), or 1(312) 455-8498 (outside USA)

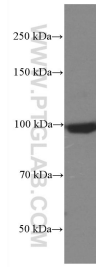
E: proteintech@ptglab.com
W: ptglab.com

This product is exclusively available under Proteintech Group brand and is not available to purchase from any other manufacturer.

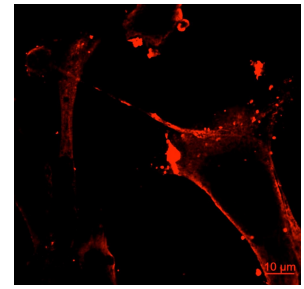
Données de validation sélectionnées



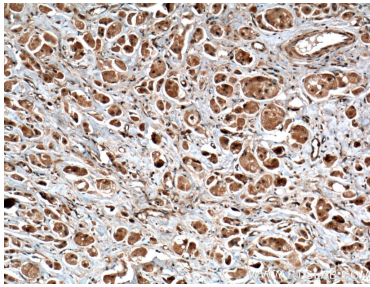
WB result of SEC5/EXOC2 antibody (66011-1-Ig; 1:3000; incubated at room temperature for 1.5 hours) with sh-Control and sh-SEC5/EXOC2 transfected HEK-293 cells.



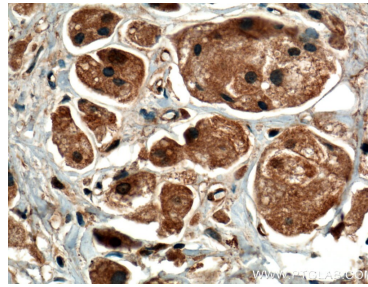
mouse brain tissue were subjected to SDS PAGE followed by western blot with 66011-1-Ig (SEC5/EXOC2 antibody) at dilution of 1:5000 incubated at room temperature for 1.5 hours.



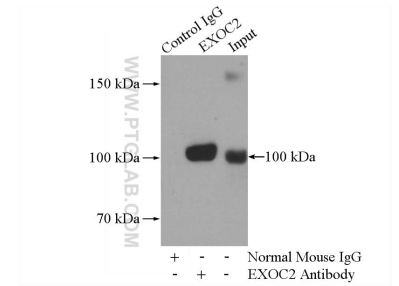
Immunostaining of exocyst protein Sec5 (66011-1-Ig, red) in MDA-MB-231 cells. The image was credited by Dr. Hae Lin Jang from Harvard Medical School.



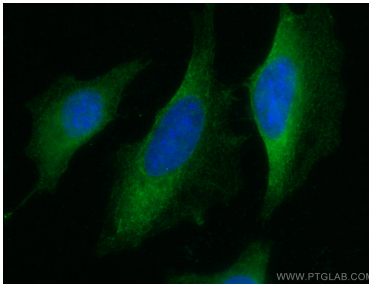
Immunohistochemical analysis of paraffin-embedded human breast cancer tissue slide using 66011-1-Ig (SEC5/EXOC2 antibody) at dilution of 1:400 (under 10x lens. Heat mediated antigen retrieval with Tris-EDTA buffer (pH 9.0).



Immunohistochemical analysis of paraffin-embedded human breast cancer tissue slide using 66011-1-Ig (SEC5/EXOC2 antibody) at dilution of 1:400 (under 40x lens. Heat mediated antigen retrieval with Tris-EDTA buffer (pH 9.0).



IP Result of anti-SEC5/EXOC2 (IP:66011-1-Ig, 5ug; Detection:66011-1-Ig 1:500) with mouse brain tissue lysate 3440ug.



Immunofluorescent analysis of (-20°C Ethanol) fixed HeLa cells using SEC5/EXOC2 antibody (66011-1-Ig, Clone: 1C11G2) at dilution of 1:400 and CoraLite®488-Conjugated AffiniPure Goat Anti-Mouse IgG(H+L).