

À des fins de recherche uniquement

Anticorps Monoclonal anti-HLA class I ABC



Numéro de catalogue: 66013-1-Ig

Phare

9 Publications

Informations de base

Numéro de catalogue: 66013-1-Ig	Numéro d'acquisition GenBank: BC003069	Méthode de purification: Purification par protéine A
Taille: 150ul, Concentration: 1130 µg/ml by Nanodrop and 1107 µg/ml by Bradford method using BSA as the standard;	Identification du gène (NCBI): 3105	CloneNo.: 5C5B7
Hôte: Mouse	Nom complet: major histocompatibility complex, class I, A	Dilutions recommandées: WB 1:5000-1:50000 IHC 1:1000-1:10000
Isotype: IgG2b	MW calculé 41 kDa	
Immunogen Catalog Number: AG7488	MW observés: 40-44 kDa	

Applications

Applications testées:

FC, IHC, WB, ELISA

Demandes citées:

IHC, IP, WB

Spécificité de l'espèce:

Humain, porc

Espèces citées:

Humain, porc

Remarque-IHC: il est suggéré de démasquer l'antigène avec un tampon de TE buffer pH 9,0; (*) A défaut, 'le démasquage de l'antigène peut être effectué avec un tampon citrate pH 6,0.

Contrôles positifs:

WB : cellules HeLa, cellules HEK-293, cellules HepG2, cellules Jurkat, cellules NCCIT, cellules Raji, cellules U-937, globules blancs humains, tissu splénique de porc

IHC : tissu d'amygdalite humaine, tissu de cancer de l'estomac humain, tissu de cancer du foie humain

Informations générales

Human major histocompatibility complex (MHC) antigens, also referred to as human leukocyte antigens (HLA), are encoded by genes located on the short arm of chromosome 6 (6p21.3). There are two classes of HLA antigens: class I (HLA-A, B and C) and class II (HLA-D). This class I molecules are polymorphic membrane glycoproteins composed of a heavy (alpha) chain (44 kDa) which is encoded by a HLA class I gene (HLA-A, B or C), and β 2-microglobulin light (beta) chain (12 kDa). They are involved in the presentation of foreign antigens to the immune system. (PMID: 667938; 3375250)

Publications notables

Autrice	Pubmed ID	Journal	Application
Fengwen Zhang	36136978	Proc Natl Acad Sci U S A	WB,IP
Fengwen Zhang	35665005	bioRxiv	WB
Melania Scarpa	31646078	Oncoimmunology	WB

Stockage

Stockage:

Stocker à -20°C. Stable pendant un an après l'expédition.

Tampon de stockage:

PBS avec azoture de sodium à 0,02 % et glycérol à 50 % pH 7,3

L'aliquotage n'est pas nécessaire pour le stockage à -20C

*** Les 20ul contiennent 0,1% de BSA.

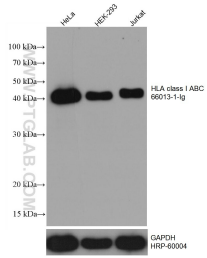
For technical support and original validation data for this product please contact:

T: 1 (888) 4PTGLAB (1-888-478-4522) (toll free in USA), or 1(312) 455-8498 (outside USA)

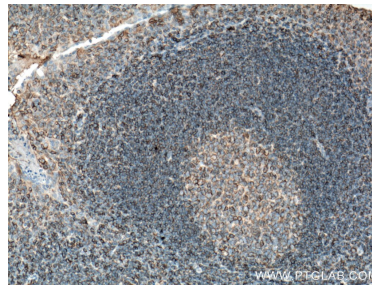
E: proteintech@ptglab.com
W: ptglab.com

This product is exclusively available under Proteintech Group brand and is not available to purchase from any other manufacturer.

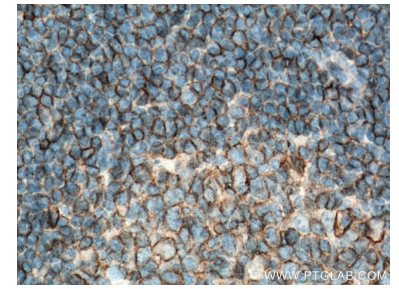
Données de validation sélectionnées



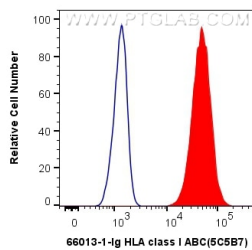
Various lysates were subjected to SDS PAGE followed by western blot with 66013-1-Ig (HLA class I ABC antibody) at dilution of 1:10000 incubated at room temperature for 1.5 hours. The membrane was stripped and reblotted with HRP-conjugated GAPDH Monoclonal antibody (HRP-60004) as loading control.



Immunohistochemical analysis of paraffin-embedded human tonsillitis tissue slide using 66013-1-Ig (HLA class I ABC antibody) at dilution of 1:10000 (under 10x lens. Heat mediated antigen retrieval with Tris-EDTA buffer (pH 9.0).



Immunohistochemical analysis of paraffin-embedded human tonsillitis tissue slide using 66013-1-Ig (HLA class I ABC antibody) at dilution of 1:10000 (under 40x lens. Heat mediated antigen retrieval with Tris-EDTA buffer (pH 9.0).



1X10⁶ Raji cells were surface stained with 0.4 ug Anti-Human HLA class I ABC (66013-1-Ig, Clone:5C5B7) and CoraLite®488-Conjugated AffiniPure Goat Anti-Mouse IgG(H+L) at dilution 1:1000 (red), or 0.4 ug Mouse IgG2b Isotype Control (MPC-11) (65128-1-Ig, Clone: MPC-11) (blue). Cells were not fixed.