

À des fins de recherche uniquement

# Anticorps Monoclonal anti-CDC6

Numéro de catalogue: 66021-1-Ig



## Informations de base

<b>Numéro de catalogue:</b> 66021-1-Ig	<b>Numéro d'acquisition GenBank:</b> BC025232	<b>Méthode de purification:</b> Purification par protéine G
<b>Taille:</b> 150ul , Concentration: 747 µg/ml by Bradford method using BSA as the standard;	<b>Identification du gène (NCBI):</b> 990	<b>CloneNo.:</b> 6F12D2
<b>Hôte:</b> Mouse	<b>Nom complet:</b> cell division cycle 6 homolog (S. cerevisiae)	<b>Dilutions recommandées:</b> WB 1:500-1:1000 IF 1:20-1:200
<b>Isotype:</b> IgG1	<b>MW calculé</b> 560 aa, 63 kDa	
<b>Immunogen Catalog Number:</b> AG17958	<b>MW observés:</b> 65 kDa	

## Applications

<b>Applications testées:</b> IF, WB, ELISA	<b>Contrôles positifs:</b>
<b>Spécificité de l'espèce:</b> Humain, rat, souris	<b>WB :</b> cellules HeLa, cellules HEK-293T, cellules Jurkat, cellules NIH/3T3, cellules Raji, cellules ROS1728 <b>IF :</b> cellules HepG2,

## Informations générales

CDC6, also named as CDC18L and HsCDC18, belongs to the CDC6/cdc18 family. It is involved in the initiation of DNA replication and functions as a regulator at the early steps of DNA replication. It also participates in checkpoint controls that ensure DNA replication is completed before mitosis is initiated. It localizes in cell nucleus during cell cycle G1, but translocates to the cytoplasm at the start of S phase. The subcellular translocation of this protein during cell cycle is regulated through its phosphorylation by Cdk. Defects in CDC6 are the cause of Meier-Gorlin syndrome type 5 (MGORS5). MGORS5 is a syndrome characterized by bilateral microtia, aplasia/hypoplasia of the patellae, and severe intrauterine and postnatal growth retardation with short stature and poor weight gain. This antibody is a mouse monoclonal antibody raised against residues near the C terminus of human CDC6.

## Stockage

**Stockage:**  
Stocker à -20°C. Stable pendant un an après l'expédition.  
**Tampon de stockage:**  
PBS avec azoture de sodium à 0,02 % et glycérol à 50 % pH 7,3  
L'aliquotage n'est pas nécessaire pour le stockage à -20C

\*\*\* Les 20ul contiennent 0,1% de BSA.

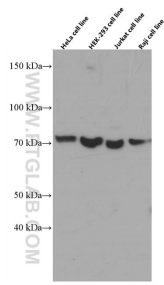
For technical support and original validation data for this product please contact:

T: 1 (888) 4PTGLAB (1-888-478-4522) (toll free in USA), or 1(312) 455-8498 (outside USA)

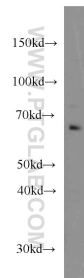
E: [proteintech@ptglab.com](mailto:proteintech@ptglab.com)  
W: [ptglab.com](http://ptglab.com)

This product is exclusively available under Proteintech Group brand and is not available to purchase from any other manufacturer.

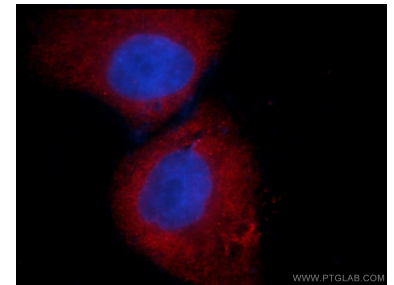
## Données de validation sélectionnées



Various lysates were subjected to SDS PAGE followed by western blot with 66021-1-Ig (CDC6 antibody) at dilution of 1:8000 incubated at room temperature for 1.5 hours.



HeLa cells were subjected to SDS PAGE followed by western blot with 66021-1-Ig (CDC6 antibody) at dilution of 1:500 incubated at room temperature for 1.5 hours.



Immunofluorescent analysis of HepG2 cells using 66021-1-Ig (CDC6 antibody) at dilution of 1:50 and Rhodamine-Goat anti-Mouse IgG.