

À des fins de recherche uniquement

# Anticorps Monoclonal anti-MCL1

Numéro de catalogue: 66026-1-Ig

Phare

14 Publications



## Informations de base

Numéro de catalogue: 66026-1-Ig	Numéro d'acquisition GenBank: BC107735	Méthode de purification: Purification par protéine A
Taille: 150ul, Concentration: 1500 µg/ml by Nanodrop and 1207 µg/ml by Bradford method using BSA as the standard;	Identification du gène (NCBI): 4170 Nom complet: myeloid cell leukemia sequence 1 (BCL2-related)	CloneNo.: 1E3C2 Dilutions recommandées: WB 1:2000-1:10000 IHC 1:250-1:1000 IF 1:200-1:800
Hôte: Mouse	MW calculé 350 aa, 37 kDa	
Isotype: IgG2b		
Immunogen Catalog Number: AG10609		

## Applications

### Applications testées:

IF, IHC, WB, ELISA

### Demandes citées:

IHC, WB

### Spécificité de l'espèce:

Humain

### Espèces citées:

Humain, rat, souris

**Remarque-IHC: il est suggéré de démasquer l'antigène avec un tampon de TE buffer pH 9,0; (\*) A défaut, 'le démasquage de l'antigène peut être effectué avec un tampon citrate pH 6,0.**

### Contrôles positifs:

WB : cellules HeLa, cellules A431, cellules A549, cellules Daudi, cellules Jurkat, cellules Raji, cellules Ramos

IHC : tissu de cancer du sein humain,

IF : cellules HeLa, cellules MCF-7

## Informations générales

MCL-1 is an anti-apoptotic member of the Bcl-2 family originally isolated from the ML-1 human myeloid leukemia cell line. Similar to BCL2 and BCL2L1, MCL1 can interact with BAX and/or BAK1 to inhibit mitochondria-mediated apoptosis. Mcl-1 is critical for the proliferation and survival of myeloma cells in vitro, and overexpression of Mcl-1 protein in myeloma cells is associated with relapse and short event-free survival in multiple myeloma patients. Recent studies show that MCL-1 is upregulated in numerous haematological and solid tumour malignancies. Therefore, MCL-1 has been suggested as a potential new therapeutic target.

## Publications notables

Autrice	Pubmed ID	Journal	Application
Chan Yang	36232694	Int J Mol Sci	WB
Yingyan Han	31423895	Epigenetics	WB
Yongzhong Gu	31753743	Reprod Biol	WB

## Stockage

### Stockage:

Stocker à -20°C. Stable pendant un an après l'expédition.

### Tampon de stockage:

PBS avec azoture de sodium à 0,02 % et glycérol à 50 % pH 7,3

L'aliquotage n'est pas nécessaire pour le stockage à -20C

\*\*\* Les 20ul contiennent 0,1% de BSA.

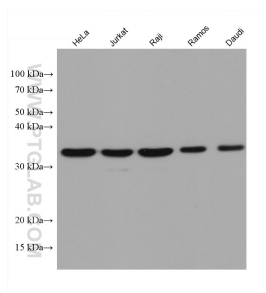
For technical support and original validation data for this product please contact:

T: 1 (888) 4PTGLAB (1-888-478-4522) (toll free in USA), or 1(312) 455-8498 (outside USA)

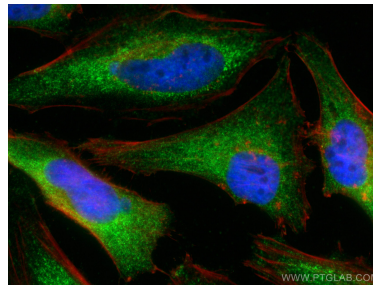
E: proteintech@ptglab.com  
W: ptglab.com

This product is exclusively available under Proteintech Group brand and is not available to purchase from any other manufacturer.

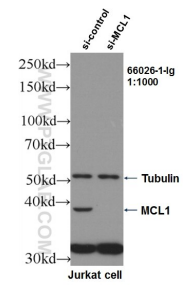
## Données de validation sélectionnées



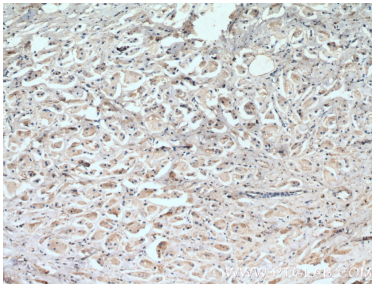
Various lysates were subjected to SDS PAGE followed by western blot with 66026-1-Ig (MCL1 antibody) at dilution of 1:5000 incubated at room temperature for 1.5 hours.



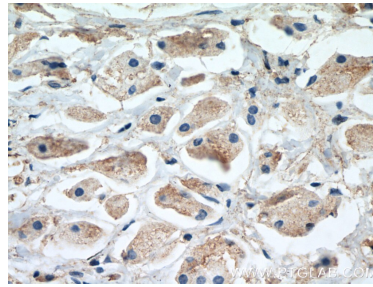
Immunofluorescent analysis of (4% PFA) fixed HeLa cells using MCL1 antibody (66026-1-Ig, Clone: 1E3C2) at dilution of 1:400 and CoraLite® 488-Conjugated AffiniPure Goat Anti-Mouse IgG(H+L), CL594-Phalloidin (red).



WB result of MCL1 antibody (66026-1-Ig, 1:1000) with si-Control and si-MCL1 transfected Jurkat cells.



Immunohistochemical analysis of paraffin-embedded human breast cancer tissue slide using 66026-1-Ig (MCL1 antibody) at dilution of 1:500 (under 10x lens. Heat mediated antigen retrieval with Tris-EDTA buffer (pH 9.0).



Immunohistochemical analysis of paraffin-embedded human breast cancer tissue slide using 66026-1-Ig (MCL1 antibody) at dilution of 1:500 (under 40x lens. Heat mediated antigen retrieval with Tris-EDTA buffer (pH 9.0).