

À des fins de recherche uniquement

Anticorps Monoclonal anti-IVD

Numéro de catalogue: 66032-1-Ig **1 Publications**



Informations de base

Numéro de catalogue: 66032-1-Ig	Numéro d'acquisition GenBank: BC017202	Méthode de purification: Purification par protéine A
Taille: 150ul , Concentration: 640 µg/ml by Bradford method using BSA as the standard;	Identification du gène (NCBI): 3712	CloneNo.: 2D12A5
Hôte: Mouse	Nom complet: isovaleryl Coenzyme A dehydrogenase	Dilutions recommandées: WB 1:1000-1:6000 IHC 1:500-1:2000 IF 1:50-1:500
Isotype: IgG2a	MW calculé 46 kDa	
Immunogen Catalog Number: AG18042	MW observés: 41-46 kDa	

Applications

Applications testées:

IF, IHC, WB, ELISA

Demandes citées:

WB

Spécificité de l'espèce:

Humain

Espèces citées:

rat

Remarque-IHC: il est suggéré de démasquer l'antigène avec un tampon de TE buffer pH 9,0; (*) A défaut, 'le démasquage de l'antigène peut être 'effectué avec un tampon citrate pH 6,0.

Contrôles positifs:

WB : cellules HEK-293, cellules Jurkat, cellules L02, cellules MCF-7, tissu hépatique humain

IHC : tissu de cancer du foie humain, tissu hépatique humain

IF : tissu de cancer du foie humain, cellules MCF-7

Informations générales

IVD(Isovaleryl CoA dehydrogenase, mitochondrial) is a member of the acylCoA dehydrogenase family and is involved in the catabolism of leucine. In size, IVD precursor and mature proteins produced by class I mutants are indistinguishable from their normal counterparts. Class II, III, and IV mutants make IVD precursor proteins 42 kD in size rather than the normal 45 kD(PMID:2063866). It has 2 isoforms produced by alternative splicing.

Publications notables

Autrice	Pubmed ID	Journal	Application
Hui Liu	26168851	Arch Toxicol	WB

Stockage

Stockage:

Stocker à -20°C. Stable pendant un an après l'expédition.

Tampon de stockage:

PBS avec azoture de sodium à 0,02 % et glycérol à 50 % pH 7,3

L'aliquotage n'est pas nécessaire pour le stockage à -20C

*** Les 20ul contiennent 0,1% de BSA.

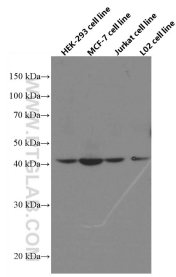
For technical support and original validation data for this product please contact:

T: 1 (888) 4PTGLAB (1-888-478-4522) (toll free in USA), or 1(312) 455-8498 (outside USA)

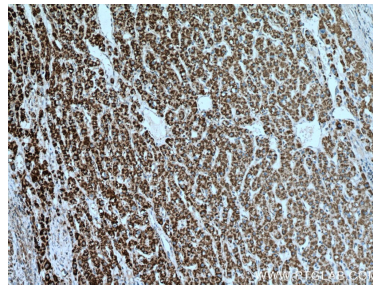
E: proteintech@ptglab.com
W: ptglab.com

This product is exclusively available under Proteintech Group brand and is not available to purchase from any other manufacturer.

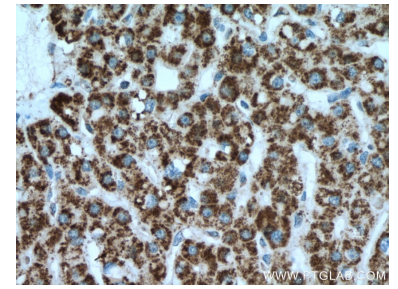
Données de validation sélectionnées



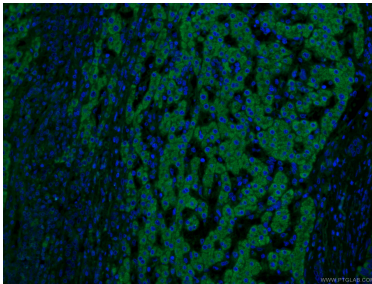
Various lysates were subjected to SDS PAGE followed by western blot with 66032-1-Ig (IVD antibody) at dilution of 1:3000 incubated at room temperature for 1.5 hours.



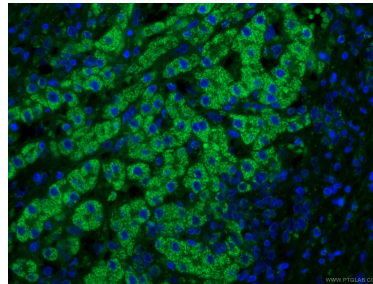
Immunohistochemical analysis of paraffin-embedded human liver cancer tissue slide using 66032-1-Ig (IVD antibody) at dilution of 1:1000 (under 10x lens). Heat mediated antigen retrieval with Tris-EDTA buffer (pH 9.0).



Immunohistochemical analysis of paraffin-embedded human liver cancer tissue slide using 66032-1-Ig (IVD antibody) at dilution of 1:1000 (under 40x lens). Heat mediated antigen retrieval with Tris-EDTA buffer (pH 9.0).



Immunofluorescent analysis of (4% PFA) fixed human liver cancer tissue using 66032-1-Ig (IVD antibody) at dilution of 1:100 and CoraLite488-Conjugated AffiniPure Goat Anti-Mouse IgG(H+L).



Immunofluorescent analysis of (4% PFA) fixed human liver cancer tissue using 66032-1-Ig (IVD antibody) at dilution of 1:100 and CoraLite488-Conjugated AffiniPure Goat Anti-Mouse IgG(H+L).