

À des fins de recherche uniquement

Anticorps Monoclonal anti-CPT1A

Numéro de catalogue: 66039-1-Ig

Phare

16 Publications



Informations de base

Numéro de catalogue:

66039-1-Ig

Numéro d'acquisition GenBank:

BC000185

Méthode de purification:

Purification par protéine A

Taille:

150ul, Concentration: 2100 µg/ml by Nanodrop and 1000 µg/ml by Bradford method using BSA as the standard;

Identification du gène (NCBI):

1374

CloneNo.:

5D8G9

Hôte:

Mouse

Nom complet:

carnitine palmitoyltransferase 1A (liver)

Dilutions recommandées:

WB 1:2000-1:12000

IP 0.5-4.0 ug for IP and 1:500-1:1000

for WB

IHC 1:200-1:800

Isotype:

IgG2a

MW calculé

88 kDa

MW observés:

86 kDa

Immunogen Catalog Number:

AG7745

Applications

Applications testées:

FC, IHC, IP, WB, ELISA

Demandes citées:

FC, IF, IHC, IP, WB

Spécificité de l'espèce:

Humain, rat, souris

Espèces citées:

Humain, rat, souris

Remarque-IHC: il est suggéré de démasquer l'antigène avec un tampon de TE buffer pH 9,0; (*) A défaut, 'le démasquage de l'antigène peut être 'effectué avec un tampon citrate pH 6,0.

Contrôles positifs:

WB : cellules A549,

IP : cellules MCF-7,

IHC : tissu de cancer du sein humain, tissu hépatique humain

Informations générales

CPT1A, also named as CPT1, CPT1-L and L-CPT1, belongs to the carnitine/choline acetyltransferase family. Carnitine palmitoyltransferase (CPT) deficiencies are common disorders of mitochondrial fatty acid oxidation. The CPT system is made up of two separate proteins located in the outer (CPT1) and inner (CPT2) mitochondrial membranes. CPT1A is an active forms of related liver-type carnitine palmitoyltransferase I. (PMID: 11001805). CPT1A deficiency presents as recurrent attacks of fasting hypoketotic hypoglycemia. (PMID: 15363638). This antibody can bind the close sequences genes.

Publications notables

Autrice	Pubmed ID	Journal	Application
Xinhui Liu	36313325	Front Pharmacol	WB
Patrick Vancura	27727308	PLoS One	WB, IHC
Mohamed A Zayed	33214136	Diabetes	WB

Stockage

Stockage:

Stocker à -20°C. Stable pendant un an après l'expédition.

Tampon de stockage:

PBS avec azoture de sodium à 0,02 % et glycérol à 50 % pH 7,3

L'aliquotage n'est pas nécessaire pour le stockage à -20C

*** Les 20ul contiennent 0,1% de BSA.

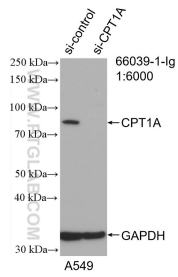
For technical support and original validation data for this product please contact:

T: 1 (888) 4PTGLAB (1-888-478-4522) (toll free in USA), or 1(312) 455-8498 (outside USA)

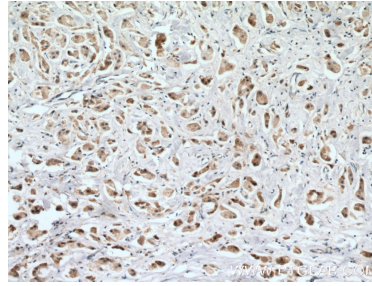
E: proteintech@ptglab.com
W: ptglab.com

This product is exclusively available under Proteintech Group brand and is not available to purchase from any other manufacturer.

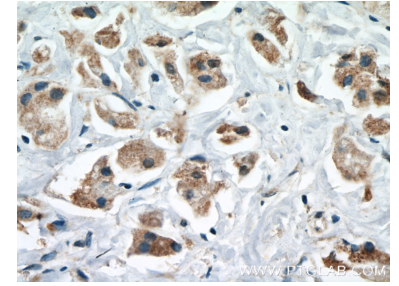
Données de validation sélectionnées



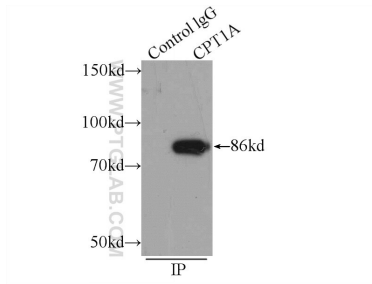
WB result of CPT1A antibody (66039-1-Ig; 1:6000; incubated at room temperature for 1.5 hours) with sh-Control and sh-CPT1A transfected A549 cells.



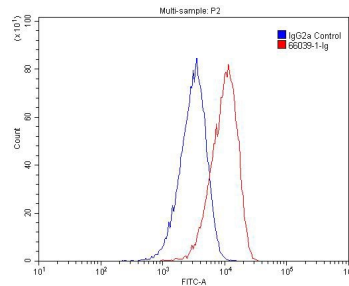
Immunohistochemical analysis of paraffin-embedded human breast cancer tissue slide using 66039-1-Ig (CPT1A antibody) at dilution of 1:400 (under 10x lens. Heat mediated antigen retrieval with Tris-EDTA buffer (pH 9.0).



Immunohistochemical analysis of paraffin-embedded human breast cancer tissue slide using 66039-1-Ig (CPT1A antibody) at dilution of 1:400 (under 40x lens. Heat mediated antigen retrieval with Tris-EDTA buffer (pH 9.0).



IP Result of anti-CPT1A (IP:66039-1-Ig, 4ug; Detection:66039-1-Ig 1:500) with MCF-7 cells lysate 1200ug.



1x10⁶ HeLa cells were stained with 0.2ug CPT1A antibody (66039-1-Ig, red) and control antibody (blue). Alexa Fluor 488-conjugated AffiniPure Goat Anti-Mouse IgG(H+L) with dilution 1:1500. Cells were fixed with 4% PFA and permeabilized with 0.1% Triton X-100.