

À des fins de recherche uniquement

Anticorps Monoclonal anti-FKBP52

Numéro de catalogue: 66040-2-Ig



Informations de base

Numéro de catalogue: 66040-2-Ig	Numéro d'acquisition GenBank: BC007924	Méthode de purification: Purification par protéine A
Taille: 150ul, Concentration: 2100 µg/ml by 2288 Nanodrop and 1000 µg/ml by Bradford method using BSA as the standard;	Identification du gène (NCBI): FK506 binding protein 4, 59kDa	CloneNo.: 1B5F1
Hôte: Mouse	Nom complet: FK506 binding protein 4, 59kDa	Dilutions recommandées: WB 1:5000-1:50000 IHC 1:1000-1:4000 IF 1:200-1:800
Isotype: IgG1	MW calculé: 59 kDa	
Immunogen Catalog Number: AG18704	MW observés: 56 kDa	

Applications

Applications testées:

IF, IHC, WB, ELISA

Spécificité de l'espèce:

Humain, rat

Remarque-IHC: il est suggéré de démasquer l'antigène avec un tampon de TE buffer pH 9.0; (*) À défaut, 'le démasquage de l'antigène peut être 'effectué avec un tampon citrate pH 6,0.

Contrôles positifs:

WB : cellules HeLa, cellules HEK-293, cellules HepG2, cellules HSC-T6, cellules Jurkat, cellules K-562

IHC : tissu de cancer du sein humain,

IF : tissu de cancer du sein humain,

Informations générales

FKBP52 (FK506 binding protein 4) is a member of the immunophilin protein family that comprises intracellular protein effectors of immunosuppressive drugs, and it is known as a steroid receptor-associated protein. As a novel regulator of microtubule dynamics, FKBP52 is associated with the motor protein dynein and with the cytoskeleton during mitosis. FKBP52 is highly expressed in CNS regions susceptible to Alzheimer's, and plays a role in modulating toxicity of Abeta peptides. The protein can associate with the Tau function, and may help to decipher and modulate the events involved in Tau-induced neurodegeneration. In addition, FKBP52 is likely to play a role in growth and development of the male genitalia.

Stockage

Stockage:

Stocker à -20°C. Stable pendant un an après l'expédition.

Tampon de stockage:

PBS avec azoture de sodium à 0,02 % et glycérol à 50 % pH 7,3

L'aliquotage n'est pas nécessaire pour le stockage à -20C

*** Les 20ul contiennent 0,1% de BSA.

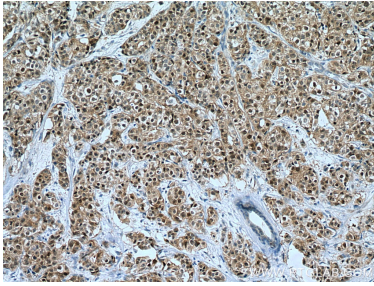
For technical support and original validation data for this product please contact:

T: 1 (888) 4PTGLAB (1-888-478-4522) (toll free in USA), or 1(312) 455-8498 (outside USA)

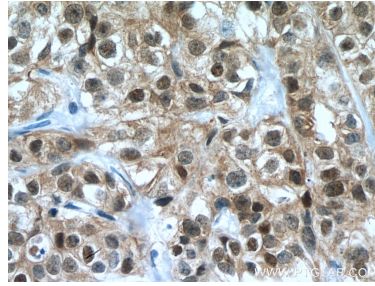
E: proteintech@ptglab.com
W: ptglab.com

This product is exclusively available under Proteintech Group brand and is not available to purchase from any other manufacturer.

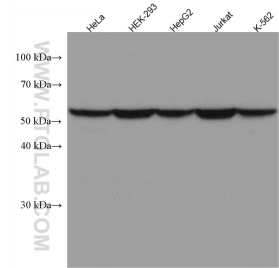
Données de validation sélectionnées



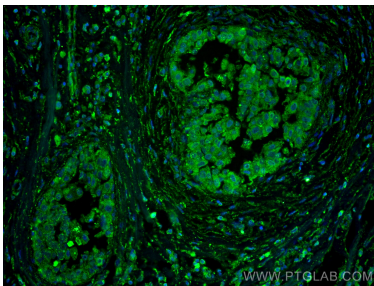
Immunohistochemical analysis of paraffin-embedded human breast cancer tissue slide using 66040-2-Ig (FKBP52 antibody) at dilution of 1:2000 (under 10x lens). Heat mediated antigen retrieval with Tris-EDTA buffer (pH 9.0).



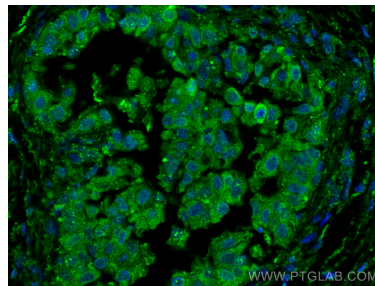
Immunohistochemical analysis of paraffin-embedded human breast cancer tissue slide using 66040-2-Ig (FKBP52 antibody) at dilution of 1:2000 (under 40x lens). Heat mediated antigen retrieval with Tris-EDTA buffer (pH 9.0).



Various lysates were subjected to SDS PAGE followed by western blot with 66040-2-Ig (FKBP52 antibody) at dilution of 1:20000 incubated at room temperature for 1.5 hours.



Immunofluorescent analysis of (4% PFA) fixed human breast cancer tissue using FKBP52 antibody (66040-2-Ig, Clone: 1B5F1) at dilution of 1:400 and CoraLite®488-Conjugated AffiniPure Goat Anti-Mouse IgG(H+L).



Immunofluorescent analysis of (4% PFA) fixed human breast cancer tissue using FKBP52 antibody (66040-2-Ig, Clone: 1B5F1) at dilution of 1:400 and CoraLite®488-Conjugated AffiniPure Goat Anti-Mouse IgG(H+L).