

À des fins de recherche uniquement

# Anticorps Monoclonal anti-LONP1

Numéro de catalogue: 66043-1-Ig **3 Publications**



## Informations de base

<b>Numéro de catalogue:</b> 66043-1-Ig	<b>Numéro d'acquisition GenBank:</b> BC000235	<b>Méthode de purification:</b> Purification par protéine G
<b>Taille:</b> 150ul , Concentration: 2000 µg/ml by Nanodrop and 1560 µg/ml by Bradford method using BSA as the standard;	<b>Identification du gène (NCBI):</b> 9361	<b>CloneNo.:</b> 1C6C12
<b>Hôte:</b> Mouse	<b>Nom complet:</b> Lon peptidase 1, mitochondrial	<b>Dilutions recommandées:</b> WB 1:1000-1:5000 IHC 1:400-1:1600 IF 1:10-1:100
<b>Isotype:</b> IgG1	<b>MW calculé:</b> 106 kDa	
<b>Immunogen Catalog Number:</b> AG7306	<b>MW observés:</b> 100 kDa	

## Applications

### Applications testées:

IF, IHC, WB, ELISA

### Demandes citées:

IHC, WB

### Spécificité de l'espèce:

Humain, rat, souris

### Espèces citées:

Humain, souris

**Remarque-IHC: il est suggéré de démasquer l'antigène avec un tampon de TE buffer pH 9,0; (\*) À défaut, 'le démasquage de l'antigène peut être effectué avec un tampon citrate pH 6,0.**

### Contrôles positifs:

**WB :** cellules ROS1728, cellules HEK-293, cellules HSC-T6, cellules Jurkat, cellules L02, cellules NIH/3T3, cellules RAW 264.7, tissu cardiaque humain, tissu hépatique humain

**IHC :** tissu de cancer du poumon humain, tissu cardiaque humain, tissu hépatique humain

**IF :** cellules C6,

## Informations générales

LONP1(Lon protease homolog, mitochondrial) is also named as LONP, LONHS, HLON, LON, PRSS15, PIM1, MGC1498 and belongs to the peptidase S16 family. It seems to play a major role in the elimination of oxidatively modified proteins in the mitochondrial matrix(PMID:18021745). LONP1, also a nuclearly encoded and mitochondrially located stress-responsive protease, is involved in heme-mediated ALAS-1 turnover(PMID:21659532). It recognizes specific surface determinants or folds, initiates proteolysis at solvent-accessible sites, and generates unfolded polypeptides that are then processively degraded(PMID:15870080).

## Publications notables

Autrice	Pubmed ID	Journal	Application
Yusuke Sekine	37327776	Mol Cell	WB
Yifei Liu	37095454	Mol Med	IHC,WB
Elianne P Bulthuis	36825437	EMBO J	WB

## Stockage

### Stockage:

Stocker à -20°C. Stable pendant un an après l'expédition.

### Tampon de stockage:

PBS avec azoture de sodium à 0,02 % et glycérol à 50 % pH 7,3

L'aliquotage n'est pas nécessaire pour le stockage à -20C

\*\*\* Les 20ul contiennent 0,1% de BSA.

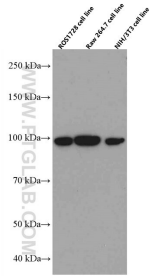
For technical support and original validation data for this product please contact:

T: 1 (888) 4PTGLAB (1-888-478-4522) (toll free in USA), or 1(312) 455-8498 (outside USA)

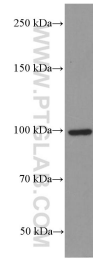
E: proteintech@ptglab.com  
W: ptglab.com

This product is exclusively available under Proteintech Group brand and is not available to purchase from any other manufacturer.

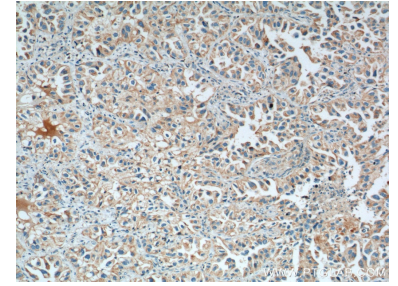
## Données de validation sélectionnées



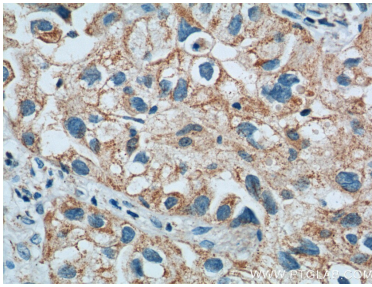
Various lysates were subjected to SDS PAGE followed by western blot with 66043-1-Ig (LONP1 antibody) at dilution of 1:5000 incubated at room temperature for 1.5 hours.



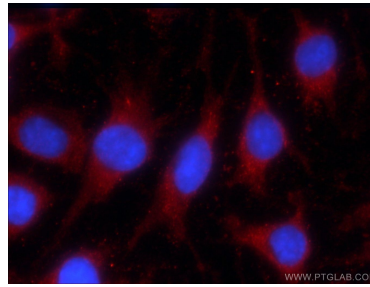
Jurkat cells were subjected to SDS PAGE followed by western blot with 66043-1-Ig (LONP1 Antibody) at dilution of 1:5000 incubated at room temperature for 1.5 hours.



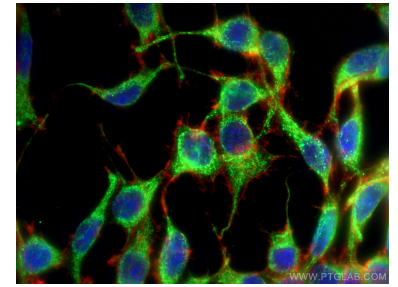
Immunohistochemical analysis of paraffin-embedded human lung cancer tissue slide using 66043-1-Ig (LONP1 Antibody) at dilution of 1:800 (under 10x lens). Heat mediated antigen retrieval with Tris-EDTA buffer (pH 9.0).



Immunohistochemical analysis of paraffin-embedded human lung cancer tissue slide using 66043-1-Ig (LONP1 Antibody) at dilution of 1:800 (under 40x lens). Heat mediated antigen retrieval with Tris-EDTA buffer (pH 9.0).



Immunofluorescent analysis of C6 cells using 66043-1-Ig (LONP1 antibody) at dilution of 1:25 and Rhodamine-Goat anti-Mouse IgG.



Immunofluorescent analysis of (-20°C Ethanol) fixed C6 cells using LONP1 antibody (66043-1-Ig, Clone: 1C6C12) at dilution of 1:200 and CoraLite@488-Conjugated AffiniPure Goat Anti-Mouse IgG(H+L), CL594-phalloidine (red).