

À des fins de recherche uniquement

Anticorps Monoclonal anti-RPS3

Numéro de catalogue: 66046-1-Ig

Phare

11 Publications



Informations de base

Numéro de catalogue:

66046-1-Ig

Numéro d'acquisition GenBank:

BC003137

Méthode de purification:

Purification par protéine A

Taille:

150ul, Concentration: 2500 µg/ml by Nanodrop and 1120 µg/ml by Bradford method using BSA as the standard;

Identification du gène (NCBI):

6188

CloneNo.:

2G7H4

Hôte:

Mouse

Nom complet:

ribosomal protein S3

Dilutions recommandées:

WB 1:20000-1:100000

Isotype:

IgG2a

MW calculé

27 kDa

IP 0.5-4.0 ug for IP and 1:1000-1:4000 for WB

MW observés:

33 kDa

IHC 1:50-1:500

IF 1:50-1:500

Immunogen Catalog Number:

AG7515

Applications

Applications testées:

IF, IHC, IP, WB, ELISA

Demandes citées:

FC, IF, IHC, WB

Spécificité de l'espèce:

Humain, rat, souris

Espèces citées:

Humain, souris

Remarque-IHC: il est suggéré de démasquer l'antigène avec un tampon de TE buffer pH 9,0; (*) A défaut, 'le démasquage de l'antigène peut être 'effectué avec un tampon citrate pH 6,0.

Contrôles positifs:

WB : cellules HSC-T6, cellules 4T1, cellules HEK-293, cellules HeLa, cellules HepG2, cellules Jurkat, cellules K-562, cellules Neuro-2a, cellules NIH/3T3, cellules RAW 264.7, cellules ROS1728, tissu cérébral de rat, tissu cérébral humain

IP : cellules HEK-293,

IHC : tissu de tumeur ovarienne humain, tissu de cancer du côlon humain, tissu pancréatique humain

IF : cellules HepG2,

Informations générales

40S ribosomal protein S3 (RPS3), also named as SW-cl.26, is a 243 amino acid protein, which contains one KH type-2 domain and belongs to the ribosomal protein S3P family. RPS3 localizes in the cytoplasm. RPS3 is identified in a IGF2BP1-dependent mRNP granule complex, which contains untranslated mRNAs. RPS3 plays a role in repairing various DNA damage acting as a repair UV endonuclease. Nuclear accumulation of RPS3 results in an increase in DNA repair activity to some extent, thereby sustaining neuronal survival. The calculated molecular weight of RPS3 is 26 kDa, but the modified RPS3 is about 33 kDa.

Publications notables

Autrice	Pubmed ID	Journal	Application
Wei Cai	36170234	Autophagy	IF
Nerea Ugidos	31620119	Front Immunol	WB,IF
Hiroko Nagao-Kitamoto	25449781	Cancer Lett	IHC

Stockage

Stockage:

Stocker à -20°C. Stable pendant un an après l'expédition.

Tampon de stockage:

PBS avec azoture de sodium à 0,02 % et glycérol à 50 % pH 7,3

L'aliquotage n'est pas nécessaire pour le stockage à -20C

*** Les 20ul contiennent 0,1% de BSA.

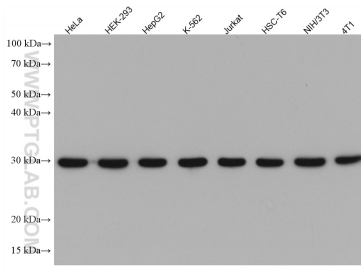
For technical support and original validation data for this product please contact:

T: 1 (888) 4PTGLAB (1-888-478-4522) (toll free in USA), or 1(312) 455-8498 (outside USA)

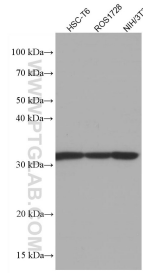
E: proteintech@ptglab.com
W: ptglab.com

This product is exclusively available under Proteintech Group brand and is not available to purchase from any other manufacturer.

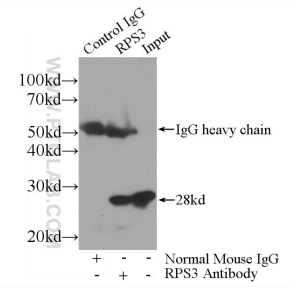
Données de validation sélectionnées



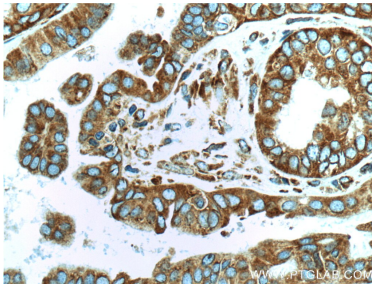
Various lysates were subjected to SDS PAGE followed by western blot with 66046-1-Ig (RPS3 antibody) at dilution of 1:100000 incubated at room temperature for 1.5 hours.



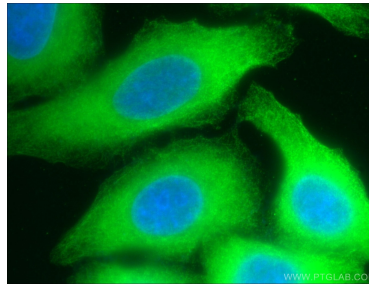
Various lysates were subjected to SDS PAGE followed by western blot with 66046-1-Ig (RPS3 antibody) at dilution of 1:50000 incubated at room temperature for 1.5 hours.



IP Result of anti-RPS3 (IP:66046-1-Ig, 3ug; Detection:66046-1-Ig 1:2000) with HEK-293 cells lysate 1800ug.



Immunohistochemical analysis of paraffin-embedded human ovary tumor tissue slide using 66046-1-Ig (RPS3 Antibody) at dilution of 1:1000 (under 40x lens). Heat mediated antigen retrieval with Tris-EDTA buffer (pH 9.0).



Immunofluorescent analysis of (-20°C Ethanol) fixed HepG2 cells using 66046-1-Ig(RPS3 antibody) at dilution of 1:100 and Alexa Fluor 488-conjugated AffiniPure Goat Anti-Mouse IgG(H+L).