

À des fins de recherche uniquement

Anticorps Monoclonal anti-Cyclophilin B



Numéro de catalogue: 66047-1-Ig **Phare**

Informations de base

Numéro de catalogue: 66047-1-Ig	Numéro d'acquisition GenBank: BC032138	Méthode de purification: Purification par protéine A
Taille: 150ul , Concentration: 1400 µg/ml by Nanodrop and 1000 µg/ml by Bradford method using BSA as the standard;	Identification du gène (NCBI): 5479	CloneNo.: 8H4F1
Hôte: Mouse	Nom complet: peptidylprolyl isomerase B (cyclophilin B)	Dilutions recommandées: WB 1:1000-1:8000 IHC 1:250-1:1000 IF 1:50-1:500
Isotype: IgG2a	MW calculé: 216 aa, 24 kDa	
Immunogen Catalog Number: AG17957	MW observés: 19-24 kDa	

Applications

Applications testées:
FC, IF, IHC, WB, ELISA

Spécificité de l'espèce:
Humain, souris

Remarque-IHC: il est suggéré de démasquer l'antigène avec un tampon de TE buffer pH 9,0; (*) À défaut, 'le démasquage de l'antigène peut être effectué avec un tampon citrate pH 6,0.

Contrôles positifs:

WB : cellules HeLa, cellules C6, cellules HEK-293, cellules Jurkat, cellules MCF-7, cellules PC-12, cellules RAW 264.7, cellules ROS1728

IHC : tissu de cancer du pancréas humain,

IF : cellules HeLa,

Informations générales

PPIB, also named as CYPB, SCYLP, PPIase B and CYP-51, belongs to the cyclophilin-type PPIase family and PPIase B subfamily. PPIases accelerate the folding of proteins. It catalyzes the cis-trans isomerization of proline imidic peptide bonds in oligopeptides. PPIB is secreted in biological fluids such as blood or milk and binds to a specific receptor present on the human lymphoblastic cell line Jurkat and on human peripheral blood lymphocytes. The full-length of PPIB has 216aa (24 kDa), and a 33aa-signal peptide could be removed in the mature form (about 19 kDa).

Stockage

Stockage:

Stocker à -20°C. Stable pendant un an après l'expédition.

Tampon de stockage:

PBS avec azoture de sodium à 0,02 % et glycérol à 50 % pH 7,3

L'aliquotage n'est pas nécessaire pour le stockage à -20C

*** Les 20ul contiennent 0,1% de BSA.

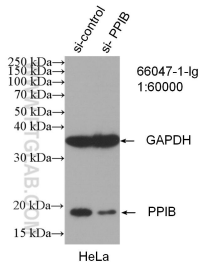
For technical support and original validation data for this product please contact:

T: 1 (888) 4PTGLAB (1-888-478-4522) (toll free in USA), or 1(312) 455-8498 (outside USA)

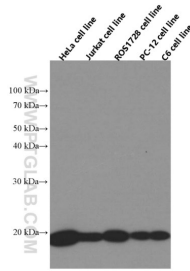
E: proteintech@ptglab.com
W: ptglab.com

This product is exclusively available under Proteintech Group brand and is not available to purchase from any other manufacturer.

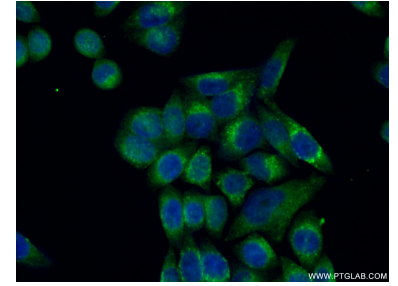
Données de validation sélectionnées



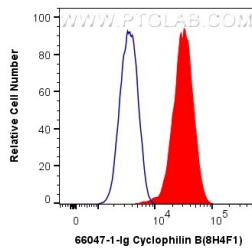
WB result of Cyclophilin B antibody (66047-1-Ig; 1:60000); incubated at room temperature for 1.5 hours) with sh-Control and sh-Cyclophilin B transfected HeLa cells.



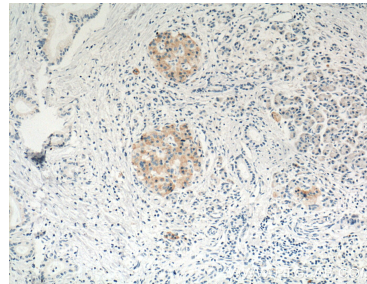
HeLa/Jurkat/ROS1728/PC-12/C6 cells were subjected to SDS PAGE followed by western blot with 66047-1-Ig (Cyclophilin B antibody at dilution of 1:4000 incubated at room temperature for 1.5 hours.



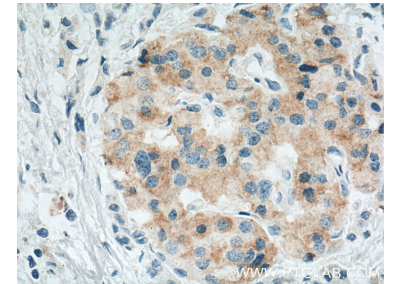
Immunofluorescent analysis of (4% PFA) fixed HeLa cells using 66047-1-Ig(Cyclophilin B antibody) at dilution of 1:50 and Alexa Fluor 488-conjugated AffiniPure Goat Anti-Mouse IgG(H+L).



1X10⁶ HeLa cells were intracellularly stained with 0.4 ug Anti-Human Cyclophilin B (66047-1-Ig, Clone:8H4F1) and Coralite®488-Conjugated AffiniPure Goat Anti-Mouse IgG(H+L) at dilution 1:1000 (red), or 0.4 ug Mouse IgG2a Isotype Control (C1.18.4) (65208-1-Ig, Clone: C1.18.4) (blue). Cells were fixed with 4% PFA and permeabilized with Flow Cytometry Perm Buffer (PF00011-C).



Immunohistochemical analysis of paraffin-embedded human pancreas cancer tissue slide using 66047-1-Ig (Cyclophilin B antibody at dilution of 1:200 (under 10x lens). Heat mediated antigen retrieval with Tris-EDTA buffer (pH 9.0).



Immunohistochemical analysis of paraffin-embedded human pancreas cancer tissue slide using 66047-1-Ig (Cyclophilin B antibody at dilution of 1:200 (under 40x lens). Heat mediated antigen retrieval with Tris-EDTA buffer (pH 9.0).