

À des fins de recherche uniquement

# Anticorps Monoclonal anti-ARHGDIB

Numéro de catalogue: 66054-1-Ig



## Informations de base

Numéro de catalogue: 66054-1-Ig	Numéro d'acquisition GenBank: BC009200	Méthode de purification: Purification par protéine G
Taille: 150ul, Concentration: 1700 µg/ml by 397 Nanodrop and 1007 µg/ml by Bradford method using BSA as the standard;	Identification du gène (NCBI): Rho GDP dissociation inhibitor (GDI)	CloneNo.: 3E7B7
Hôte: Mouse	Nom complet: beta	Dilutions recommandées: WB 1:10000-1:50000 IHC 1:5000-1:10000 IF 1:200-1:800
Isotype: IgG2b	MW calculé: 201 aa, 23 kDa	
Immunogen Catalog Number: AG9091	MW observés: 27 kDa	

## Applications

### Applications testées:

IF, IHC, WB, ELISA

### Spécificité de l'espèce:

Humain, rat, souris

**Remarque-IHC: il est suggéré de démasquer l'antigène avec un tampon de TE buffer pH 9.0; (\*) À défaut, le démasquage de l'antigène peut être effectué avec un tampon citrate pH 6,0.**

### Contrôles positifs:

WB : cellules THP-1, cellules HL-60, cellules Jurkat, cellules Raji, cellules U-937

IHC : tissu d'amygdalite humain, tissu de cervelet humain

IF : tissu d'amygdalite humain,

## Informations générales

ARHGDIB, also known as RhoGDI2, is a conserved member of the RhoGDI family and plays an important role in cell migrations. It regulates the GDP/GTP exchange reaction of the Rho proteins by inhibiting the dissociation of GDP from them, and the subsequent binding of GTP to them. It is mainly in hematopoietic, endothelial, and epithelial cells. It has been linked to tumorigenesis and metastasis. RhoGDI2 expression is downregulated in several cancer types, such as bladder, lung and lymphoma, but is upregulated in prostate and gastric cancer.

## Stockage

### Stockage:

Stocker à -20°C. Stable pendant un an après l'expédition.

### Tampon de stockage:

PBS avec azoture de sodium à 0,02 % et glycérol à 50 % pH 7,3

L'aliquotage n'est pas nécessaire pour le stockage à -20C

\*\*\* Les 20ul contiennent 0,1% de BSA.

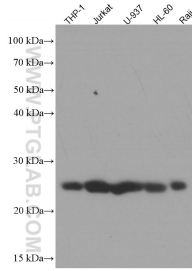
For technical support and original validation data for this product please contact:

T: 1 (888) 4PTGLAB (1-888-478-4522) (toll free in USA), or 1(312) 455-8498 (outside USA)

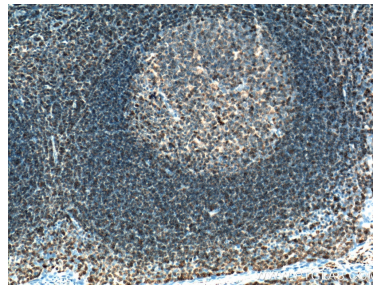
E: proteintech@ptglab.com  
W: ptglab.com

This product is exclusively available under Proteintech Group brand and is not available to purchase from any other manufacturer.

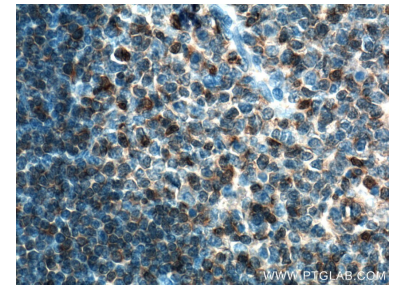
## Données de validation sélectionnées



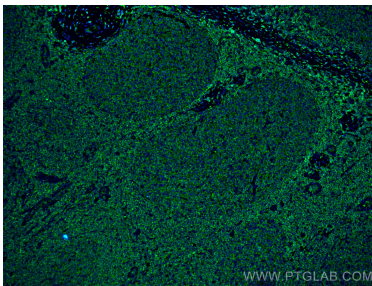
Various lysates (25µg/lane) were subjected to SDS PAGE followed by western blot with 66054-1-Ig (ARHGDI B antibody) at dilution of 1:200000 incubated at room temperature for 1.5 hours.



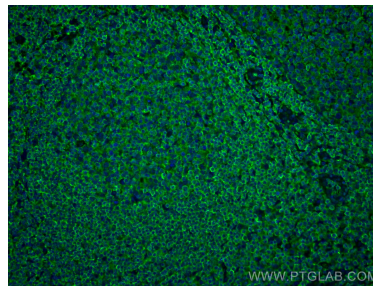
Immunohistochemical analysis of paraffin-embedded human tonsillitis tissue slide using 66054-1-Ig (ARHGDI B antibody) at dilution of 1:10000 (under 10x lens). Heat mediated antigen retrieval with Tris-EDTA buffer (pH 9.0).



Immunohistochemical analysis of paraffin-embedded human tonsillitis tissue slide using 66054-1-Ig (ARHGDI B antibody) at dilution of 1:10000 (under 40x lens). Heat mediated antigen retrieval with Tris-EDTA buffer (pH 9.0).



Immunofluorescent analysis of (4% PFA) fixed human tonsillitis tissue using ARHGDI B antibody (66054-1-Ig, Clone: 3E7B7) at dilution of 1:400 and CoraLite®488-Conjugated AffiniPure Goat Anti-Mouse IgG(H+L).



Immunofluorescent analysis of (4% PFA) fixed human tonsillitis tissue using ARHGDI B antibody (66054-1-Ig, Clone: 3E7B7) at dilution of 1:400 and CoraLite®488-Conjugated AffiniPure Goat Anti-Mouse IgG(H+L).