

À des fins de recherche uniquement

# Anticorps Monoclonal anti-RAB27A

Numéro de catalogue: 66058-1-Ig Phare



## Informations de base

Numéro de catalogue: 66058-1-Ig	Numéro d'acquisition GenBank: BC107680	Méthode de purification: Purification par protéine A
Taille: 150ul, Concentration: 1600 µg/ml by Nanodrop and 1000 µg/ml by Bradford method using BSA as the standard;	Identification du gène (NCBI): 5873	CloneNo.: 1C4B8
Hôte: Mouse	Nom complet: RAB27A, member RAS oncogene family	Dilutions recommandées: WB 1:5000-1:50000 IHC 1:5000-1:20000
Isotype: IgG1	MW calculé 221 aa, 25 kDa	
Immunogen Catalog Number: AG12382	MW observés: 27 kDa	

## Applications

### Applications testées:

IHC, WB, ELISA

### Spécificité de l'espèce:

Humain, souris

**Remarque-IHC: il est suggéré de démasquer l'antigène avec un tampon de TE buffer pH 9.0; (\*) À défaut, 'le démasquage de l'antigène peut être effectué avec un tampon citrate pH 6,0.**

### Contrôles positifs:

WB : cellules HeLa, cellules HEK-293, cellules HepG2, cellules HL-60, cellules Jurkat, cellules K-562

IHC : tissu de lymphome humain, tissu de cancer du côlon humain, tissu de muscle squelettique humain

## Informations générales

Rab27A is a member of a large family of Ras-related small GTPases. The protein is membrane-bound and may be involved in protein transport and small GTPase mediated signal transduction. Recent studies suggest that Rab27A is associated with melanosomes in pigmented cells and regulates melanosome transport via its interaction with actin-based cellular motors such as myosin Va and myosin VIIa. RAB27A is also required for regulated secretion in cytotoxic T lymphocytes. Rab27A is implicated in several diseases, including Griscelli syndrome, choroideremia, and the Hermansky-Pudlak syndrome mouse model, gunmetal.

## Stockage

### Stockage:

Stocker à -20°C. Stable pendant un an après l'expédition.

### Tampon de stockage:

PBS avec azoture de sodium à 0,02 % et glycérol à 50 % pH 7,3

L'aliquotage n'est pas nécessaire pour le stockage à -20C

\*\*\* Les 20ul contiennent 0,1% de BSA.

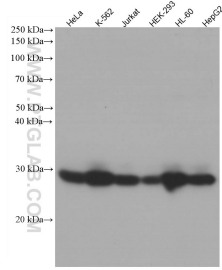
For technical support and original validation data for this product please contact:

T: 1 (888) 4PTGLAB (1-888-478-4522) (toll free  
in USA), or 1(312) 455-8498 (outside USA)

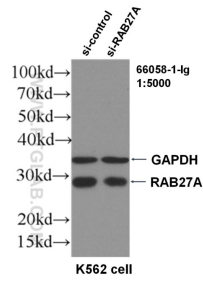
E: [proteintech@ptglab.com](mailto:proteintech@ptglab.com)  
W: [ptglab.com](http://ptglab.com)

This product is exclusively available under Proteintech Group brand and is not available to purchase from any other manufacturer.

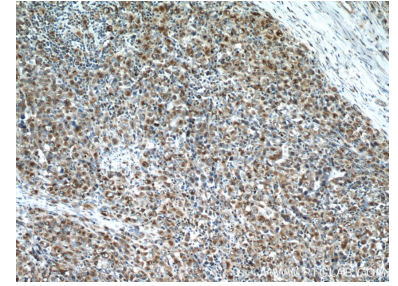
## Données de validation sélectionnées



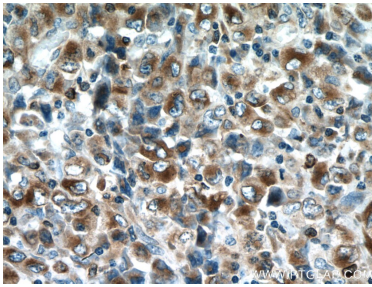
Various lysates were subjected to SDS PAGE followed by western blot with 66058-1-Ig (RAB27A antibody) at dilution of 1:20000 incubated at room temperature for 1.5 hours.



WB result of RAB27A antibody (66058-1-Ig, 1:5000) with si-Control and si-RAB27A transfected K562 cells.



Immunohistochemical analysis of paraffin-embedded human lymphoma tissue slide using 66058-1-Ig (RAB27A antibody) at dilution of 1:10000 (under 10x lens. Heat mediated antigen retrieval with Tris-EDTA buffer (pH 9.0)).



Immunohistochemical analysis of paraffin-embedded human lymphoma tissue slide using 66058-1-Ig (RAB27A antibody) at dilution of 1:10000 (under 40x lens. Heat mediated antigen retrieval with Tris-EDTA buffer (pH 9.0)).