

À des fins de recherche uniquement

Anticorps Monoclonal anti-RBM15

Numéro de catalogue: 66059-1-Ig

Phare

4 Publications



Informations de base

Numéro de catalogue:

66059-1-Ig

Numéro d'acquisition GenBank:

BC006397

Méthode de purification:

Purification par protéine A

Taille:

150ul, Concentration: 2100 µg/ml by Nanodrop and 987 µg/ml by Bradford method using BSA as the standard;

Identification du gène (NCBI):

64783

CloneNo.:

4A1A4

Nom complet:

RNA binding motif protein 15

Dilutions recommandées:

WB 1:5000-1:50000

Hôte:

Mouse

MW calculé

105 kDa

IP 0.5-4.0 ug for IP and 1:500-1:1000 for WB

Isotype:

IgG2a

MW observés:

107 kDa

IHC 1:200-1:800

IF 1:200-1:800

Immunogen Catalog Number:

AG17970

Applications

Applications testées:

IF, IHC, IP, WB, ELISA

Demandes citées:

IHC, WB

Spécificité de l'espèce:

Humain

Espèces citées:

Humain, souris

Remarque-IHC: il est suggéré de démasquer l'antigène avec un tampon de TE buffer pH 9,0; (*) À défaut, 'le démasquage de l'antigène peut être 'effectué avec un tampon citrate pH 6,0.

Contrôles positifs:

WB : cellules A549, cellules HEK293, cellules HEK-293, cellules HeLa, tissu cardiaque humain, tissu cérébral humain

IP : cellules HEK-293,

IHC : tissu de cancer du sein humain, tissu de cancer du foie humain

IF : cellules HeLa,

Informations générales

RNA-binding motif protein 15 (RBM15) belongs to the SPEN protein family, which have repressor function in several signaling pathway, and may bind to RNA through interaction with spliceosome components. It was first described as a 5' translocation partner of the MAL gene in t(1,22)(p13;q13) infant acute megakaryocytic leukemia, and it functions in murine hematopoiesis through modulating Notch-induced transcriptional activation, which play crucial roles in leukemogenesis. Decreasing RBM15 levels with RNA interference could inhibit the growth and proliferation, block the cell cycle, and induce apoptosis in CML cells.

Publications notables

Autrice	Pubmed ID	Journal	Application
Li Zhang	26575292	Elife	WB
Yujie Li	34751492	J Gene Med	IHC
Yuxian Guo	34876574	Nat Commun	WB

Stockage

Stockage:

Stocker à -20°C. Stable pendant un an après l'expédition.

Tampon de stockage:

PBS avec azoture de sodium à 0,02 % et glycérol à 50 % pH 7,3

L'aliquotage n'est pas nécessaire pour le stockage à -20C

*** Les 20ul contiennent 0,1% de BSA.

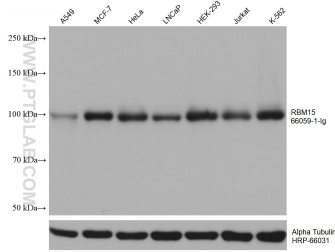
For technical support and original validation data for this product please contact:

T: 1 (888) 4PTGLAB (1-888-478-4522) (toll free in USA), or 1(312) 455-8498 (outside USA)

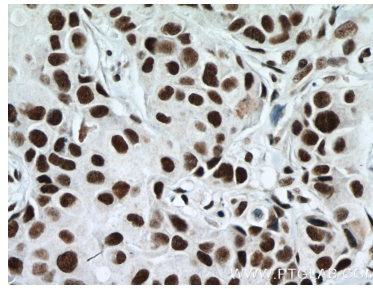
E: proteintech@ptglab.com
W: ptglab.com

This product is exclusively available under Proteintech Group brand and is not available to purchase from any other manufacturer.

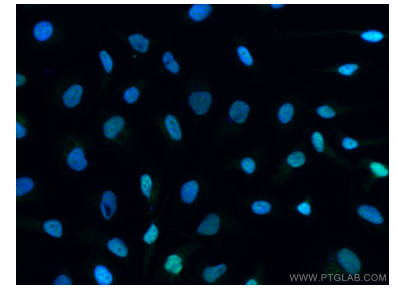
Données de validation sélectionnées



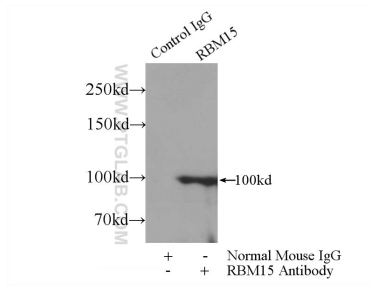
Various lysates were subjected to SDS PAGE followed by western blot with 66059-1-Ig (RBM15 antibody) at dilution of 1:10000 incubated at room temperature for 1.5 hours. The membrane was stripped and reblotted with HRP-conjugated Alpha Tubulin Monoclonal antibody (HRP-66031) as loading control.



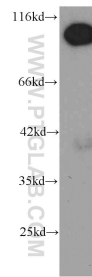
Immunohistochemical analysis of paraffin-embedded human breast cancer tissue slide using 66059-1-Ig (RBM15 antibody) at dilution of 1:400 (under 40x lens. Heat mediated antigen retrieval with Tris-EDTA buffer (pH 9.0).



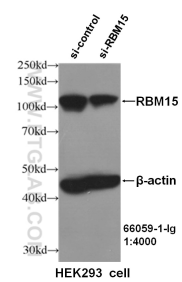
Immunofluorescent analysis of (4% PFA) fixed HeLa cells using RBM15 antibody (66059-1-Ig, Clone: 4A1A4) at dilution of 1:400 and CoraLite@488-Conjugated AffiniPure Goat Anti-Mouse IgG(H+L).



IP Result of anti-RBM15 (IP:66059-1-Ig, 3ug; Detection:66059-1-Ig 1:500) with HEK-293 cells lysate 1800ug.



HeLa cells were subjected to SDS PAGE followed by western blot with 66059-1-Ig (RBM15 antibody) at dilution of 1:1000 incubated at room temperature for 1.5 hours.



WB result of RBM15 antibody (66059-1-Ig, 1:4000) with si-control and si-RBM15 transfected HEK293 cells.