

À des fins de recherche uniquement

Anticorps Monoclonal anti-Caveolin-1



Numéro de catalogue: 66067-1-Ig

Phare

10 Publications

Informations de base

Numéro de catalogue: 66067-1-Ig	Numéro d'acquisition GenBank: BC006432	Méthode de purification: Purification par protéine A
Taille: 150ul, Concentration: 1300 µg/ml by Nanodrop and 740 µg/ml by Bradford method using BSA as the standard;	Identification du gène (NCBI): 857	CloneNo.: 6C2B2
Hôte: Mouse	Nom complet: caveolin 1, caveolae protein, 22kDa	Dilutions recommandées: WB 1:2000-1:50000 IHC 1:2500-1:10000
Isotype: IgG1	MW calculé: 22 kDa	
Immunogen Catalog Number: AG8049	MW observés: 20-25 kDa	

Applications

Applications testées:

IHC, WB, ELISA

Demandes citées:

IF, IHC, IP, WB

Spécificité de l'espèce:

Humain, porc, rat, souris

Espèces citées:

Humain, souris

Remarque-IHC: il est suggéré de démasquer l'antigène avec un tampon de TE buffer pH 9,0; (*) A défaut, 'le démasquage de l'antigène peut être effectué avec un tampon citrate pH 6,0.

Contrôles positifs:

WB : cellules A549, cellules A431, cellules HeLa, cellules PC-3, tissu cardiaque de porc, tissu cardiaque de rat, tissu cardiaque de souris, tissu cardiaque humain

IHC : tissu de cancer du sein humain, tissu de cancer du foie humain

Informations générales

Caveolin-1 (CAV1), a multifunctional protein, is the main constituent molecule of caveolae and represents a scaffolding molecule for several signaling molecules including epidermal growth factor receptor (PMID: 19641024). Several studies have implicated that a reduced expression of CAV1 was found in cancers including head and neck carcinoma (PMID: 19002186). However, other studies recognize CAV1 as a tumor promoter because CAV1 is overexpressed in various kinds of cancers, especially in oral cancer (PMID: 20558341). Recent study also show that CAV1 is involved in gastric Cancer (PMID: 25339030).

Publications notables

Autrice	Pubmed ID	Journal	Application
Miao Liu	36063979	Life Sci	WB,IF,IP
Kushal Saha	36219473	J Crohns Colitis	WB
Yi Wang	33165443	Int J Clin Exp Pathol	WB

Stockage

Stockage:

Stocker à -20°C. Stable pendant un an après l'expédition.

Tampon de stockage:

PBS avec azoture de sodium à 0,02 % et glycérol à 50 % pH 7,3

L'aliquotage n'est pas nécessaire pour le stockage à -20C

*** Les 20ul contiennent 0,1% de BSA.

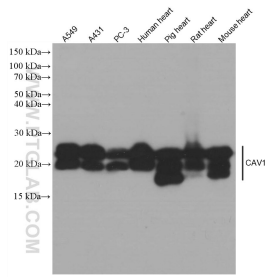
For technical support and original validation data for this product please contact:

T: 1 (888) 4PTGLAB (1-888-478-4522) (toll free in USA), or 1(312) 455-8498 (outside USA)

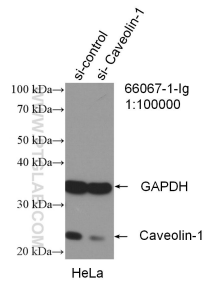
E: proteintech@ptglab.com
W: ptglab.com

This product is exclusively available under Proteintech Group brand and is not available to purchase from any other manufacturer.

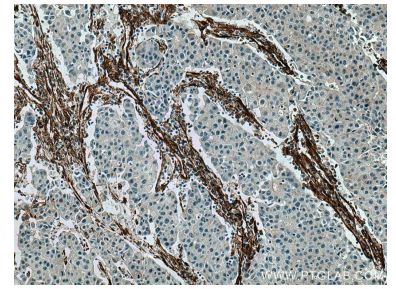
Données de validation sélectionnées



Various lysates were subjected to SDS PAGE followed by western blot with 66067-1-Ig (Caveolin-1 antibody) at dilution of 1:100000 incubated at room temperature for 1.5 hours.



WB result of Caveolin-1 antibody (66067-1-Ig; 1:100000; incubated at room temperature for 1.5 hours) with sh-Control and sh-Caveolin-1 transfected HeLa cells.



Immunohistochemical analysis of paraffin-embedded human breast cancer tissue slide using 66067-1-Ig (Caveolin-1 antibody) at dilution of 1:5000 (under 10x lens). Heat mediated antigen retrieval with Tris-EDTA buffer (pH 9.0).