

À des fins de recherche uniquement

Anticorps Monoclonal anti-Integrin Alpha 3



Numéro de catalogue: 66070-1-Ig

Phare

13 Publications

Informations de base

Numéro de catalogue: 66070-1-Ig	Numéro d'acquisition GenBank: BC150190	Méthode de purification: Purification par protéine A
Taille: 150ul, Concentration: 1600 µg/ml by Nanodrop and 893 µg/ml by Bradford method using BSA as the standard;	Identification du gène (NCBI): 3675	CloneNo.: 3F9G4
Hôte: Mouse	Nom complet: integrin, alpha 3 (antigen CD49C, alpha 3 subunit of VLA-3 receptor)	Dilutions recommandées: WB 1:500-1:2000 IHC 1:2000-1:8000
Isotype: IgG2a	MW calculé: 1066 aa, 119 kDa	
Immunogen Catalog Number: AG17293	MW observés: 120 kDa	

Applications

Applications testées:

FC, IHC, WB, ELISA

Demandes citées:

FC, IF, IHC, WB

Spécificité de l'espèce:

Humain, porc, souris

Espèces citées:

Humain, Lapin, souris

Remarque-IHC: il est suggéré de démasquer l'antigène avec un tampon de TE buffer pH 9,0; (*) A défaut, 'le démasquage de l'antigène peut être effectué avec un tampon citrate pH 6,0.

Contrôles positifs:

WB : cellules PC-3, cellules A431, cellules A549, cellules HepG2, tissu cérébral de souris

IHC : tissu de cancer du poumon humain,

Informations générales

ITGA3, also named as MSK18, CD49c, GAPB3 and FRP-2, belongs to the integrin alpha chain family. It is a receptor for fibronectin, laminin, collagen, epiligrin, thrombospondin and CSPG4. ITGA3 may mediate with LGALS3 the stimulation by CSPG4 of endothelial cells migration. ITGA3 is highly concentrated in epithelial cells where it strongly adheres to Laminin-5 and Laminin-5 induced rapid adhesion can be blocked by antibodies against the alpha-3 integrin subunit. It can be cleaved into heavy chain(840aa) and light chain(176aa). This antibody can recognize the heavy chain.

Publications notables

Autrice	Pubmed ID	Journal	Application
Céline Cegarra	36108060	PLoS One	
Kai Guo	34514877	Thyroid	IHC
Siying Zeng	36281226	iScience	WB

Stockage

Stockage:

Stocker à -20°C. Stable pendant un an après l'expédition.

Tampon de stockage:

PBS avec azoture de sodium à 0,02 % et glycérol à 50 % pH 7,3

L'aliquotage n'est pas nécessaire pour le stockage à -20C

*** Les 20ul contiennent 0,1% de BSA.

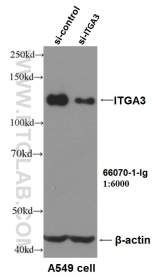
For technical support and original validation data for this product please contact:

T: 1 (888) 4PTGLAB (1-888-478-4522) (toll free in USA), or 1(312) 455-8498 (outside USA)

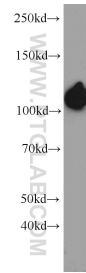
E: proteintech@ptglab.com
W: ptglab.com

This product is exclusively available under Proteintech Group brand and is not available to purchase from any other manufacturer.

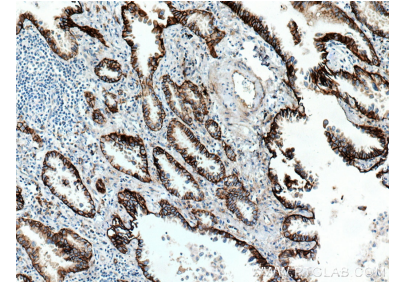
Données de validation sélectionnées



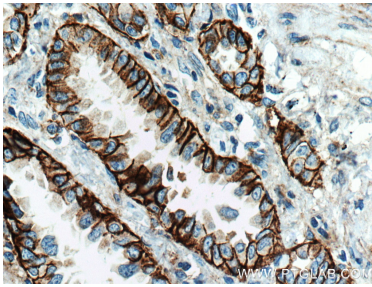
WB result of ITGA3 antibody (66070-1-Ig, 1:6000) with si-control and si-ITGA3 transfected A549 cells.



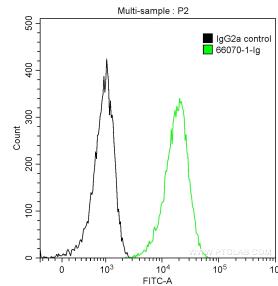
PC-3 cells were subjected to SDS PAGE followed by western blot with 66070-1-Ig (ITGA3 antibody) at dilution of 1:1000 incubated at room temperature for 1.5 hours.



Immunohistochemical analysis of paraffin-embedded human lung cancer tissue slide using 66070-1-Ig (Integrin alpha-3 antibody) at dilution of 1:4000 (under 10x lens. Heat mediated antigen retrieval with Tris-EDTA buffer (pH 9.0).



Immunohistochemical analysis of paraffin-embedded human lung cancer tissue slide using 66070-1-Ig (Integrin alpha-3 antibody) at dilution of 1:4000 (under 40x lens. Heat mediated antigen retrieval with Tris-EDTA buffer (pH 9.0).



1×10^6 PC-3 cells were stained with 0.2 ug Anti-Human Integrin Alpha 3 (66070-1-Ig, Clone: 3F9G4) and CoraLite®488-Conjugated AffiniPure Goat Anti-Mouse IgG(H+L) at dilution 1:1000 (green), or stained with 0.2 ug Mouse IgG2a Isotype Control and CoraLite®488-Conjugated AffiniPure Goat Anti-Mouse IgG(H+L) at dilution 1:1000 (black). Cells were fixed with 90% MeOH.