

À des fins de recherche uniquement

Anticorps Monoclonal anti-EPLIN

Numéro de catalogue: 66071-1-Ig Phare



Informations de base

Numéro de catalogue: 66071-1-Ig	Numéro d'acquisition GenBank: BC001247	Méthode de purification: Purification par protéine A
Taille: 150ul , Concentration: 553 µg/ml by Bradford method using BSA as the standard;	Identification du gène (NCBI): 51474	CloneNo.: 6E6E6
Hôte: Mouse	Nom complet: LIM domain and actin binding 1	Dilutions recommandées: WB 1:2000-1:10000 IHC 1:20-1:200 IF 1:20-1:200
Isotype: IgG1	MW calculé: 85 kDa	
Immunogen Catalog Number: AG13288	MW observés: 90 kDa, 110 kDa	

Applications

Applications testées:

IF, IHC, WB, ELISA

Spécificité de l'espèce:

Humain, rat

Remarque-IHC: il est suggéré de démasquer l'antigène avec un tampon de TE buffer pH 9,0; (*) À défaut, 'le démasquage de l'antigène peut être effectué avec un tampon citrate pH 6,0.

Contrôles positifs:

WB : cellules HeLa, cellules COLO 320, cellules HEK-293, cellules HSC-T6, cellules HT-29, cellules ROS1728, tissu cérébral humain

IHC : tissu cardiaque humain,

IF : cellules HeLa,

Informations générales

EPLIN is a cytoskeletal protein that is preferentially expressed in epithelial cells and is implicated in regulation of cytoskeletal dynamics and cytokinesis. In human, there are two known isoforms, EPLIN-a and -b, generated by alternative promoter usage from a single gene. EPLIN-a expression is often down-regulated in cancerous cells and tissues. This antibody recognizes both of isoforms of EPLN.

Stockage

Stockage:

Stocker à -20°C. Stable pendant un an après l'expédition.

Tampon de stockage:

PBS avec azoture de sodium à 0,02 % et glycérol à 50 % pH 7,3

L'aliquotage n'est pas nécessaire pour le stockage à -20C

*** Les 20ul contiennent 0,1% de BSA.

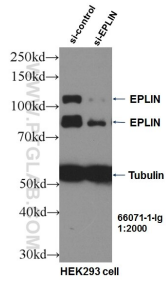
For technical support and original validation data for this product please contact:

T: 1 (888) 4PTGLAB (1-888-478-4522) (toll free in USA), or 1(312) 455-8498 (outside USA)

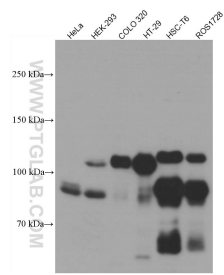
E: proteintech@ptglab.com
W: ptglab.com

This product is exclusively available under Proteintech Group brand and is not available to purchase from any other manufacturer.

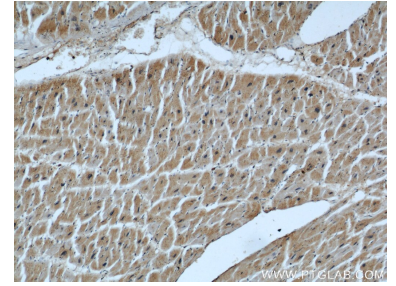
Données de validation sélectionnées



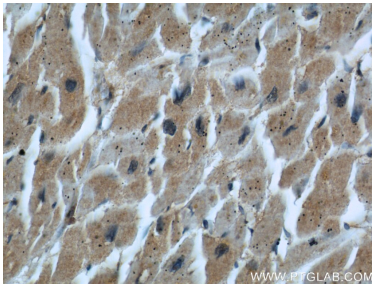
WB result of EPLIN antibody (66071-1-Ig, 1:2000) with si-Control and si-EPLIN transfected HEK293 cells.



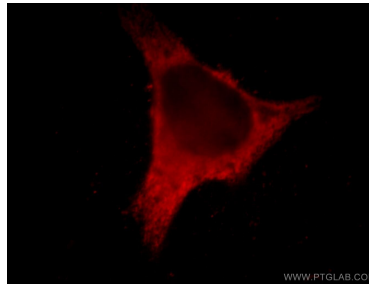
Various lysates were subjected to SDS PAGE followed by western blot with 66071-1-Ig (EPLIN antibody) at dilution of 1:5000 incubated at room temperature for 1.5 hours.



Immunohistochemical analysis of paraffin-embedded human heart using 66071-1-Ig (EPLIN antibody) at dilution of 1:50 (under 10x lens).



Immunohistochemical analysis of paraffin-embedded human heart using 66071-1-Ig (EPLIN antibody) at dilution of 1:50 (under 40x lens).



Immunofluorescent analysis of HeLa cells using 66071-1-Ig (EPLIN antibody) at dilution of 1:50 and Rhodamine-Goat anti-Mouse IgG.