

À des fins de recherche uniquement

Anticorps Monoclonal anti-TLE3

Numéro de catalogue: 66083-1-Ig



Informations de base

Numéro de catalogue:
66083-1-Ig

Taille:
150ul, Concentration: 675 µg/ml by
Nanodrop and 613 µg/ml by Bradford
method using BSA as the standard;

Hôte:
Mouse

Isotype:
IgG1

Immunogen Catalog Number:
AG17906

Numéro d'acquisition GenBank:
BC015729

Identification du gène (NCBI):
7090

Nom complet:
transducin-like enhancer of split 3
(E(sp1) homolog, Drosophila)

MW calculé
772 aa, 83 kDa

MW observés:
90 kDa

Méthode de purification:
Purification par protéine G

CloneNo.:
1D11A8

Dilutions recommandées:
WB 1:500-1:2000
IP 0.5-4.0 ug for IP and 1:500-1:1000
for WB
IHC 1:20-1:200

Applications

Applications testées:
IHC, IP, WB, ELISA

Spécificité de l'espèce:
Humain

**Remarque-IHC: il est suggéré de démasquer
l'antigène avec un tampon de TE buffer pH
9.0; (*) À défaut, le démasquage de
l'antigène peut être effectué avec un
tampon citrate pH 6,0.**

Contrôles positifs:

WB : cellules 293, HEK-

IP : cellules HEK-293,

IHC : tissu de cancer du sein humain,

Informations générales

TLE3, also named as KIAA1547 and ESG3, belongs to the WD repeat Groucho/TLE family. It is a transcriptional corepressor that binds to a number of transcription factors. It inhibits the transcriptional activation mediated by CTNNB1 and TCF family members in Wnt signaling. The effects of full-length TLE family members may be modulated by association with dominant-negative AES. TLE3 is a member of the transducin-like enhancer of split (TLE) family of proteins that have been implicated in the tumorigenesis and classification of sarcomas. It is a candidate biomarker of response to taxane therapy. (PMID:19309506)

Stockage

Stockage:

Stocker à -20°C. Stable pendant un an après l'expédition.

Tampon de stockage:

PBS avec azoture de sodium à 0,02 % et glycérol à 50 % pH 7,3

L'aliquotage n'est pas nécessaire pour le stockage à -20C

*** Les 20ul contiennent 0,1% de BSA.

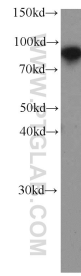
For technical support and original validation data for this product please contact:

T: 1 (888) 4PTGLAB (1-888-478-4522) (toll free
in USA), or 1(312) 455-8498 (outside USA)

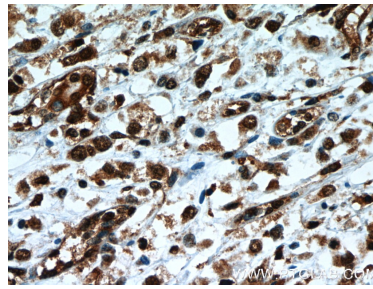
E: proteintech@ptglab.com
W: ptglab.com

This product is exclusively available under Proteintech Group brand and is not available to purchase from any other manufacturer.

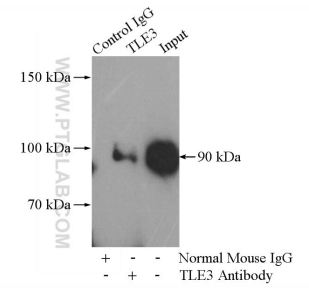
Données de validation sélectionnées



HEK-293 cells were subjected to SDS PAGE followed by western blot with 66083-1-Ig (TLE3 antibody) at dilution of 1:1000 incubated at room temperature for 1.5 hours.



Immunohistochemical analysis of paraffin-embedded human breast cancer slide using 66083-1-Ig (TLE3 Antibody) at dilution of 1:50.



IP Result of anti-TLE3 (IP:66083-1-Ig, 5ug; Detection:66083-1-Ig 1:500) with HEK-293 cells lysate 1480ug.