

À des fins de recherche uniquement

Anticorps Monoclonal anti-Serum amyloid P component



Numéro de catalogue: 66084-1-Ig **1 Publications**

Informations de base

Numéro de catalogue: 66084-1-Ig	Numéro d'acquisition GenBank: BC007058	Méthode de purification: Purification par protéine A
Taille: 150ul , Concentration: 800 µg/ml by Nanodrop and 420 µg/ml by Bradford method using BSA as the standard;	Identification du gène (NCBI): 325	CloneNo.: 1A1D10
Hôte: Mouse	Nom complet: amyloid P component, serum	Dilutions recommandées: WB 1:500-1:2000 IHC 1:50-1:500 IF 1:200-1:800
Isotype: IgG2b	MW calculé: 223 aa, 25 kDa	
Immunogen Catalog Number: AG14957	MW observés: 27 kDa	

Applications

Applications testées:

IF, IHC, WB, ELISA

Demandes citées:

IHC

Spécificité de l'espèce:

Humain

Espèces citées:

Humain

Remarque-IHC: il est suggéré de démasquer l'antigène avec un tampon de TE buffer pH 9,0; (*) A défaut, 'le démasquage de l'antigène peut être 'effectué avec un tampon citrate pH 6,0.

Contrôles positifs:

WB : tissu rénal humain, plasma humain

IHC : tissu hépatique humain, tissu rénal humain

IF : tissu de cancer du foie humain, tissu hépatique humain

Informations générales

Serum amyloid P component (SAP), a member of pentraxin family, is a constitutive serum protein that is synthesized by hepatocytes. It is an acute phase protein, structurally related to C-reactive protein. SAP is a calcium-dependent ligand binding protein, which can interact with DNA and histones and may scavenge nuclear material released from damaged circulating cells.

Publications notables

Autrice	Pubmed ID	Journal	Application
Weifeng Wang	33333044	Clin Chim Acta	IHC

Stockage

Stockage:

Stocker à -20°C. Stable pendant un an après l'expédition.

Tampon de stockage:

PBS avec azoture de sodium à 0,02 % et glycérol à 50 % pH 7,3

L'aliquotage n'est pas nécessaire pour le stockage à -20C

*** Les 20ul contiennent 0,1% de BSA.

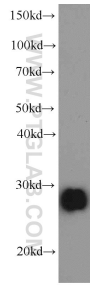
For technical support and original validation data for this product please contact:

T: 1 (888) 4PTGLAB (1-888-478-4522) (toll free in USA), or 1(312) 455-8498 (outside USA)

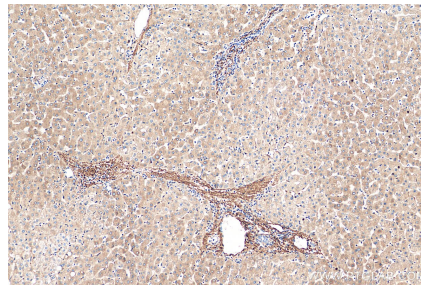
E: proteintech@ptglab.com
W: ptglab.com

This product is exclusively available under Proteintech Group brand and is not available to purchase from any other manufacturer.

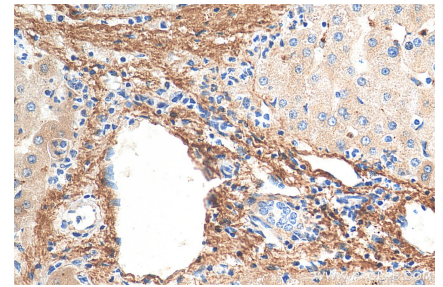
Données de validation sélectionnées



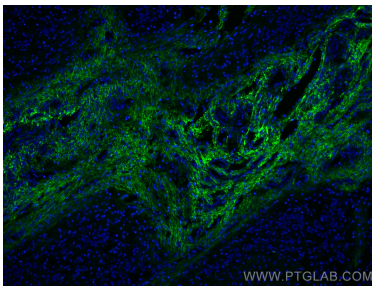
human kidney tissue were subjected to SDS PAGE followed by western blot with 66084-1-Ig (Serum amyloid P component antibody) at dilution of 1:1000 incubated at room temperature for 1.5 hours.



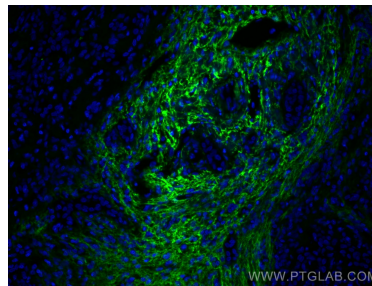
Immunohistochemical analysis of paraffin-embedded human liver tissue slide using 66084-1-Ig (Serum amyloid P component antibody) at dilution of 1:200 (under 10x lens). Heat mediated antigen retrieval with Tris-EDTA buffer (pH 9.0).



Immunohistochemical analysis of paraffin-embedded human liver tissue slide using 66084-1-Ig (Serum amyloid P component antibody) at dilution of 1:200 (under 40x lens). Heat mediated antigen retrieval with Tris-EDTA buffer (pH 9.0).



Immunofluorescent analysis of (4% PFA) fixed human liver cancer tissue using Serum amyloid P component antibody (66084-1-Ig, Clone: 1A1D10) at dilution of 1:400 and CoraLite®488-Conjugated AffiniPure Goat Anti-Mouse IgG(H+L).



Immunofluorescent analysis of (4% PFA) fixed human liver cancer tissue using Serum amyloid P component antibody (66084-1-Ig, Clone: 1A1D10) at dilution of 1:400 and CoraLite®488-Conjugated AffiniPure Goat Anti-Mouse IgG(H+L).