

À des fins de recherche uniquement

# Anticorps Monoclonal anti-UBE2C

Numéro de catalogue: 66087-1-Ig

Phare

6 Publications



## Informations de base

Numéro de catalogue:  
66087-1-Ig

Taille:  
150ul, Concentration: 840 µg/ml by  
Bradford method using BSA as the  
standard;

Hôte:  
Mouse

Isotype:  
IgG1

Immunogen Catalog Number:  
AG19235

Numéro d'acquisition GenBank:  
BC016292

Identification du gène (NCBI):  
11065

Nom complet:  
ubiquitin-conjugating enzyme E2C

MW calculé  
179 aa, 20 kDa

MW observés:  
20 kDa

Méthode de purification:  
Purification par protéine A

CloneNo.:  
1C12H8

Dilutions recommandées:  
WB 1:1000-1:4000  
IHC 1:200-1:800  
IF 1:400-1:1600

## Applications

Applications testées:  
IF, IHC, WB, ELISA

Demandes citées:  
IF, IHC, WB

Spécificité de l'espèce:  
Humain, rat, souris

Espèces citées:  
Humain

**Remarque-IHC: il est suggéré de démasquer l'antigène avec un tampon de TE buffer pH 9,0; (\*) A défaut, 'le démasquage de l'antigène peut être 'effectué avec un tampon citrate pH 6,0.**

Contrôles positifs:

WB : cellules HeLa, cellules A549, cellules HEK-293, cellules HepG2, cellules HSC-T6, cellules NIH/3T3, cellules U2OS

IHC : tissu de cancer du poumon humain, tissu de cancer du côlon humain

IF : cellules HeLa,

## Informations générales

UBE2C (Ubiquitin-conjugating enzyme E2 C) is also known as UBCH10 and belongs to the ubiquitin-conjugating enzyme family. It is highly expressed in a variety of human primary tumors, and it is able to promote cell proliferation and malignant transformation (PMID:18703417). UBE2C, along with the E3 ligase of the anaphase promoting complex (APC), catalyzes the ubiquitination of mitotic cyclins A and B, as well as securin. UBE2C is essential for cell cycle progression, and mutation of its active site cysteine confers a dominant-negative phenotype (PMID:17217624).

## Publications notables

Autrice	Pubmed ID	Journal	Application
Xianxing Wang	31715067	FEBS J	WB, IHC
Yingjie Su	36423684	J Biol Chem	WB
Andrew L Hong	30860482	Elife	WB

## Stockage

Stockage:

Stocker à -20°C. Stable pendant un an après l'expédition.

Tampon de stockage:

PBS avec azoture de sodium à 0,02 % et glycérol à 50 % pH 7,3

L'aliquotage n'est pas nécessaire pour le stockage à -20C

\*\*\* Les 20ul contiennent 0,1% de BSA.

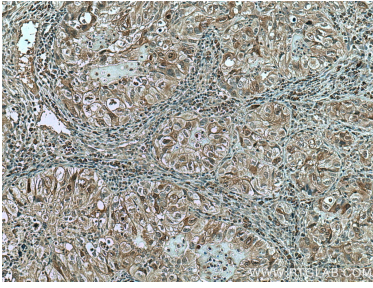
For technical support and original validation data for this product please contact:

T: 1 (888) 4PTGLAB (1-888-478-4522) (toll free in USA), or 1(312) 455-8498 (outside USA)

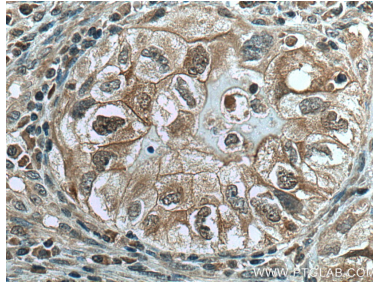
E: proteintech@ptglab.com  
W: ptglab.com

This product is exclusively available under Proteintech Group brand and is not available to purchase from any other manufacturer.

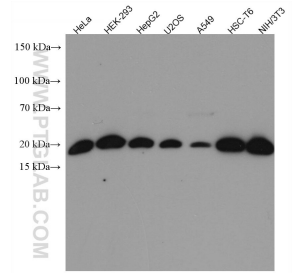
## Données de validation sélectionnées



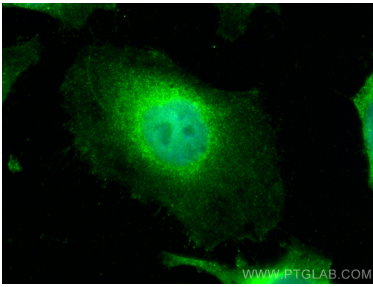
Immunohistochemical analysis of paraffin-embedded human lung cancer tissue slide using 66087-1-Ig (UBE2C antibody) at dilution of 1:400 (under 10x lens). Heat mediated antigen retrieval with Tris-EDTA buffer (pH 9.0).



Immunohistochemical analysis of paraffin-embedded human lung cancer tissue slide using 66087-1-Ig (UBE2C antibody) at dilution of 1:400 (under 40x lens). Heat mediated antigen retrieval with Tris-EDTA buffer (pH 9.0).



Various lysates were subjected to SDS PAGE followed by western blot with 66087-1-Ig (UBE2C antibody) at dilution of 1:2000 incubated at room temperature for 1.5 hours.



Immunofluorescent analysis of (4% PFA) fixed HeLa cells using UBE2C antibody (66087-1-Ig, Clone: 1C12H8) at dilution of 1:800 and CoraLite®488-Conjugated AffiniPure Goat Anti-Mouse IgG(H+L).