

À des fins de recherche uniquement

Anticorps Monoclonal anti-Factor XII



Numéro de catalogue: 66089-1-Ig

1 Publications

Informations de base

Numéro de catalogue: 66089-1-Ig	Numéro d'acquisition GenBank: BC012390	Méthode de purification: Purification par protéine A
Taille: 150ul , Concentration: 2600 µg/ml by Nanodrop and 1280 µg/ml by Bradford method using BSA as the standard;	Identification du gène (NCBI): 2161	CloneNo.: 2E2F11
Hôte: Mouse	Nom complet: coagulation factor XII (Hageman factor)	Dilutions recommandées: WB 1:500-1:2000 IHC 1:50-1:500 IF 1:50-1:500
Isotype: IgG2b	MW calculé 615 aa, 68 kDa	
Immunogen Catalog Number: AG3401	MW observés: 28 kDa	

Applications

Applications testées:

IF, IHC, WB, ELISA

Demandes citées:

WB

Spécificité de l'espèce:

Humain, souris

Espèces citées:

souris

Remarque-IHC: il est suggéré de démasquer l'antigène avec un tampon de TE buffer pH 9,0; (*) A défaut, 'le démasquage de l'antigène peut être 'effectué avec un tampon citrate pH 6,0.

Contrôles positifs:

WB : cellules K562, cellules K-562

IHC : tissu hépatique humain, tissu rénal humain

IF : cellules HepG2,

Informations générales

Factor XII (F XII, Hageman factor) is a 80 kDa, single chain glycoprotein that circulates in blood as an inactive zymogen. F XII plays an important role in blood coagulation, fibrinolysis, and kinin generation. Factor XII is activated by kallikrein in alpha-factor XIIa, which is further converted by trypsin into beta-factor XIIa. Alpha-factor XIIa is composed of a 52 kDa NH₂-terminal heavy chain, called coagulation factor XIIa heavy chain, and a 28 kDa COOH-terminal light chain, called coagulation factor XIIa light chain, connected by a disulfide bond. Beta-factor XIIa is composed of 2 chains linked by a disulfide bond, an N-terminal nonapeptide, called beta-factor XIIa part 1, and coagulation factor XIIa light chain, also known in this context as beta-factor XIIa part 2.

Publications notables

Autrice	Pubmed ID	Journal	Application
Fanfan Li	30959404	Mol Ther Nucleic Acids	WB

Stockage

Stockage:

Stocker à -20°C. Stable pendant un an après l'expédition.

Tampon de stockage:

PBS avec azoture de sodium à 0,02 % et glycérol à 50 % pH 7,3

L'aliquotage n'est pas nécessaire pour le stockage à -20C

*** Les 20ul contiennent 0,1% de BSA.

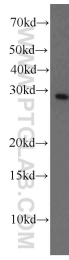
For technical support and original validation data for this product please contact:

T: 1 (888) 4PTGLAB (1-888-478-4522) (toll free
in USA), or 1(312) 455-8498 (outside USA)

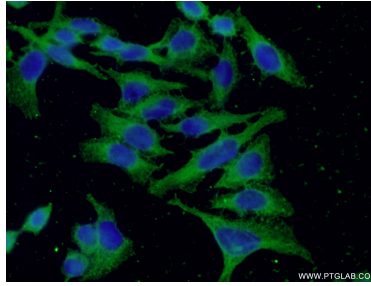
E: proteintech@ptglab.com
W: ptglab.com

This product is exclusively available under Proteintech Group brand and is not available to purchase from any other manufacturer.

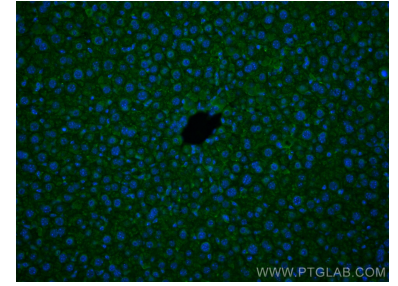
Données de validation sélectionnées



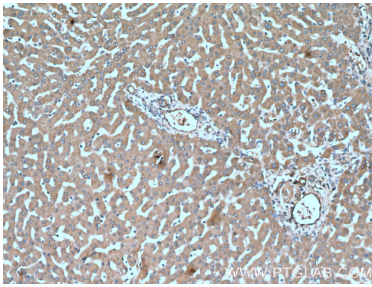
K-562 cells were subjected to SDS PAGE followed by western blot with 66089-1-Ig (Factor XII antibody) at dilution of 1:1000 incubated at room temperature for 1.5 hours.



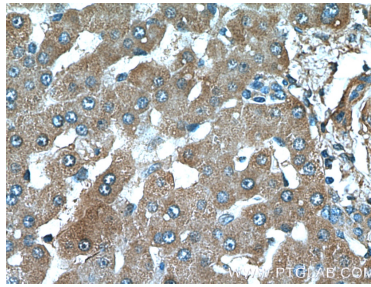
Immunofluorescent analysis of (-20°C Ethanol) fixed HepG2 cells using 66089-1-Ig (Factor XII antibody) at dilution of 1:100 and Alexa Fluor 488-conjugated AffiniPure Goat Anti-Mouse IgG(H+L).



Immunofluorescent analysis of (4% PFA) fixed mouse liver tissue using Factor XII antibody (66089-1-Ig, Clone: 2E2F11) at dilution of 1:400 and CoraLite®488-Conjugated AffiniPure Goat Anti-Mouse IgG(H+L).



Immunohistochemical analysis of paraffin-embedded human liver tissue slide using 66089-1-Ig (Factor XII antibody) at dilution of 1:200 (under 10x lens).



Immunohistochemical analysis of paraffin-embedded human liver tissue slide using 66089-1-Ig (Factor XII antibody) at dilution of 1:200 (under 40x lens).