

À des fins de recherche uniquement

Anticorps Monoclonal anti-FKBP2

Numéro de catalogue: 66091-1-Ig **1 Publications**



Informations de base

| | | |
|--|---|---|
| Numéro de catalogue: 66091-1-Ig | Numéro d'acquisition GenBank: BC003384 | Méthode de purification: Purification par protéine G |
| Taille: 150ul , Concentration: 700 µg/ml by Nanodrop and 573 µg/ml by Bradford method using BSA as the standard; | Identification du gène (NCBI): 2286 | CloneNo.: 2H7E8 |
| Hôte: Mouse | Nom complet: FK506 binding protein 2, 13kDa | Dilutions recommandées: WB 1:500-1:1000 IHC 1:50-1:500 |
| Isotype: IgG1 | MW calculé: 142 aa, 16 kDa | |
| Immunogen Catalog Number: AG19113 | MW observés: 16 kDa | |

Applications

Applications testées:

IHC, WB, ELISA

Demandes citées:

WB

Spécificité de l'espèce:

Humain, porc, rat

Espèces citées:

Humain

Remarque-IHC: il est suggéré de démasquer l'antigène avec un tampon de TE buffer pH 9,0; (*) A défaut, 'le démasquage de l'antigène peut être 'effectué avec un tampon citrate pH 6,0.

Contrôles positifs:

WB : Human cerebellum tissue, tissu cérébral de rat, tissu cérébral humain, tissu hépatique de porc

IHC : tissu de cancer de la prostate humain,

Informations générales

FKBP2 is also named as FKBP13 and belongs to the FKBP-type PPIase family. It catalyzes the cis-trans isomerization of proline imidic peptide bonds in oligopeptides. FKBP2 has a 21-amino acid signal peptide and appears to be membrane-associated(PMID:1713687). It is localized to the lumen of the endoplasmic reticulum (ER). FKBP12 and FKBP13 are highly similar proteins, of molecular masses 12 kDa and 13 kDa respectively, with approx.43 % amino acid identity. The strong homology between FKBP12 and FKBP13 suggests that they may share similar biological functions, although, apart from rotamase activity, details relating to the function of either protein are scant(PMID:8373365).

Publications notables

| Autrice | Pubmed ID | Journal | Application |
|----------|-----------|-----------------------|-------------|
| Jing Wen | 34985411 | Emerg Microbes Infect | WB |

Stockage

Stockage:

Stocker à -20°C. Stable pendant un an après l'expédition.

Tampon de stockage:

PBS avec azoture de sodium à 0,02 % et glycérol à 50 % pH 7,3

L'aliquotage n'est pas nécessaire pour le stockage à -20C

***** Les 20ul contiennent 0,1% de BSA.**

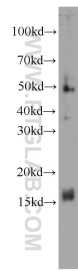
For technical support and original validation data for this product please contact:

T: 1 (888) 4PTGLAB (1-888-478-4522) (toll free in USA), or 1(312) 455-8498 (outside USA)

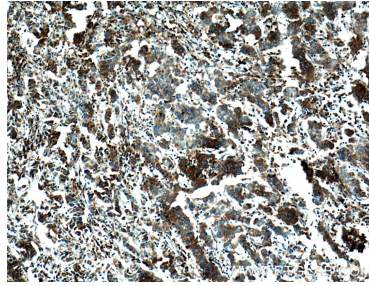
E: proteintech@ptglab.com
W: ptglab.com

This product is exclusively available under Proteintech Group brand and is not available to purchase from any other manufacturer.

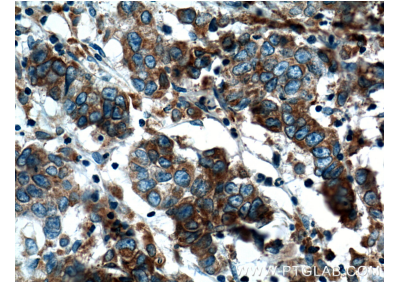
Données de validation sélectionnées



human cerebellum tissue were subjected to SDS PAGE followed by western blot with 66091-1-Ig (FKBP2 antibody) at dilution of 1:500 incubated at room temperature for 1.5 hours.



Immunohistochemical analysis of paraffin-embedded human prostate cancer tissue slide using 66091-1-Ig (FKBP2 Antibody) at dilution of 1:200 (under 10x lens). Heat mediated antigen retrieval with Tris-EDTA buffer (pH 9.0).



Immunohistochemical analysis of paraffin-embedded human prostate cancer tissue slide using 66091-1-Ig (FKBP2 Antibody) at dilution of 1:200 (under 40x lens). Heat mediated antigen retrieval with Tris-EDTA buffer (pH 9.0).