

À des fins de recherche uniquement

Anticorps Monoclonal anti-Melanophilin



Numéro de catalogue: 66092-1-Ig **2 Publications**

Informations de base

| | | |
|---|---|--|
| Numéro de catalogue: 66092-1-Ig | Numéro d'acquisition GenBank: BC001653 | Méthode de purification: Purification par protéine G |
| Taille: 150ul , Concentration: 900 µg/ml by Nanodrop and 767 µg/ml by Bradford method using BSA as the standard; | Identification du gène (NCBI): 79083 | CloneNo.: 1A8D12 |
| Hôte: Mouse | Nom complet: melanophilin | Dilutions recommandées: WB 1:1000-1:6000 IHC 1:50-1:500 IF 1:50-1:500 |
| Isotype: IgG1 | MW calculé 66 kDa | |
| Immunogen Catalog Number: AG19286 | MW observés: 66 kDa | |

Applications

Applications testées:

IF, IHC, WB, ELISA

Demandes citées:

IF, WB

Spécificité de l'espèce:

Humain, porc

Espèces citées:

Humain, rat

Remarque-IHC: il est suggéré de démasquer l'antigène avec un tampon de TE buffer pH 9,0; (*) A défaut, 'le démasquage de l'antigène peut être 'effectué avec un tampon citrate pH 6,0.

Contrôles positifs:

WB : cellules HEK-293, cellules Jurkat, cellules PC-3, tissu cérébral de porc, tissu cérébral humain

IHC : tissu rénal humain, tissu de cancer de la peau humain

IF : cellules HepG2,

Informations générales

Melanophilin (MLPH) is a member of the exophilin subfamily of Rab effector proteins. MLPH is a modular protein, forming a ternary complex with the small Ras-related GTPase Rab27A in its GTP-bound form and the motor protein myosin Va. It regulates retention of melanosomes at the peripheral actin cytoskeleton of melanocytes, a process essential for normal mammalian pigmentation. Defects in MLPH are a cause of Griscelli syndrome type 3 (GS3), which is characterized by a silver-gray hair color and abnormal pigment distribution in the hair shaft.

Publications notables

| Autrice | Pubmed ID | Journal | Application |
|------------|-----------|---------------------|-------------|
| Shuhui Qi | 31322203 | Mol Med Rep | WB |
| Wentao Shi | 37524274 | Int J Biol Macromol | WB,IF |

Stockage

Stockage:

Stocker à -20°C. Stable pendant un an après l'expédition.

Tampon de stockage:

PBS avec azoture de sodium à 0,02 % et glycérol à 50 % pH 7,3

L'aliquotage n'est pas nécessaire pour le stockage à -20C

*** Les 20ul contiennent 0,1% de BSA.

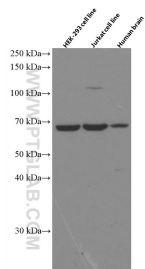
For technical support and original validation data for this product please contact:

T: 1 (888) 4PTGLAB (1-888-478-4522) (toll free in USA), or 1(312) 455-8498 (outside USA)

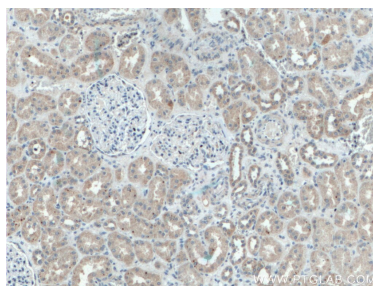
E: proteintech@ptglab.com
W: ptglab.com

This product is exclusively available under Proteintech Group brand and is not available to purchase from any other manufacturer.

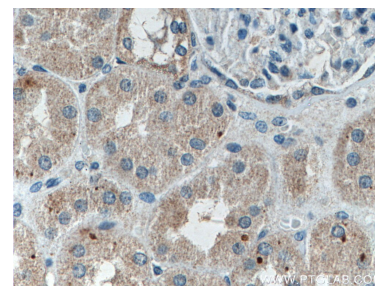
Données de validation sélectionnées



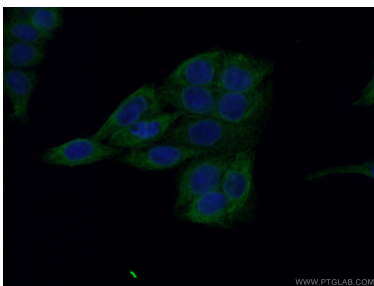
Various lysates were subjected to SDS PAGE followed by western blot with 66092-1-Ig (Melanophilin antibody) at dilution of 1:3000 incubated at room temperature for 1.5 hours.



Immunohistochemical analysis of paraffin-embedded human kidney tissue slide using 66092-1-Ig (Melanophilin antibody) at dilution of 1:200 (under 10x lens).



Immunohistochemical analysis of paraffin-embedded human kidney tissue slide using 66092-1-Ig (Melanophilin antibody) at dilution of 1:200 (under 40x lens).



Immunofluorescent analysis of (-20°C Ethanol) fixed HepG2 cells using 66092-1-Ig (Melanophilin antibody) at dilution of 1:100 and Alexa Fluor 488-Conjugated AffiniPure Goat Anti-Mouse IgG(H+L).