

À des fins de recherche uniquement

# Anticorps Monoclonal anti-Lamin B1



Numéro de catalogue: 66095-1-Ig

Phare

283 Publications

## Informations de base

Numéro de catalogue:

66095-1-Ig

Numéro d'acquisition GenBank:

BC012295

Méthode de purification:

Purification par protéine A

Taille:

150ul, Concentration: 1000 µg/ml by Nanodrop and 467 µg/ml by Bradford method using BSA as the standard;

Identification du gène (NCBI):

4001

CloneNo.:

3C10G12

Hôte:

Mouse

Nom complet:

lamin B1

Dilutions recommandées:

WB 1:20000-1:100000

IP 0.5-4.0 µg for IP and 1:5000-1:50000 for WB

Isotype:

IgG1

MW calculé

66 kDa

IHC 1:500-1:2000

IF 1:250-1:1000

Immunogen Catalog Number:

AG20522

## Applications

Applications testées:

FC, IF, IHC, IP, WB, ELISA

Demandes citées:

CoIP, FC, IF, IHC, IP, WB

Spécificité de l'espèce:

Humain, rat, souris

Espèces citées:

Humain, Lapin, poisson-zèbre, rat, souris

**Remarque-IHC: il est suggéré de démasquer l'antigène avec un tampon de TE buffer pH 9,0; (\*) A défaut, 'le démasquage de l'antigène peut être 'effectué avec un tampon citrate pH 6,0.**

Contrôles positifs:

WB : cellules NCI-H1299, cellules HEK-293, cellules HeLa, cellules HepG2, cellules Jurkat, cellules K-562, cellules NIH/3T3, cellules PC-12, multi-cellules/tissus

IP : cellules HeLa,

IHC : tissu de cancer du pancréas humain, tissu de cancer du sein humain

IF : cellules HepG2, cellules HeLa, tissu oculaire de souris

## Informations générales

Lamins are components of the nuclear lamina, a fibrous layer on the nucleoplasmic side of the inner nuclear membrane, which is thought to provide a framework for the nuclear envelope and may also interact with chromatin. The nuclear lamina consists of a two-dimensional matrix of proteins located next to the inner nuclear membrane. The lamin family of proteins make up the matrix and are highly conserved in evolution. During mitosis, the lamina matrix is reversibly disassembled as the lamin proteins are phosphorylated. Vertebrate lamins consist of two types, A and B. This gene encodes one of the two B type proteins, B1. This protein is not suitable for samples where the nuclear envelope has been removed.

## Publications notables

Autrice	Pubmed ID	Journal	Application
Juan M Barajas	34599880	Am J Pathol	WB
Xiangmin Zhang	36069548	J Virol	WB
Chie Nakashima	32998265	Int J Mol Sci	WB

## Stockage

Stockage:

Stocker à -20°C. Stable pendant un an après l'expédition.

Tampon de stockage:

PBS avec azoture de sodium à 0,02 % et glycérol à 50 % pH 7,3

L'aliquotage n'est pas nécessaire pour le stockage à -20C

\*\*\* Les 20ul contiennent 0,1% de BSA.

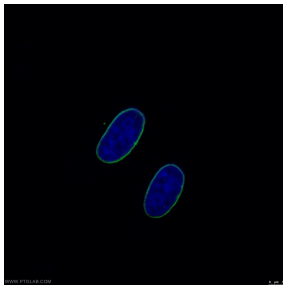
For technical support and original validation data for this product please contact:

T: 1 (888) 4PTGLAB (1-888-478-4522) (toll free in USA), or 1(312) 455-8498 (outside USA)

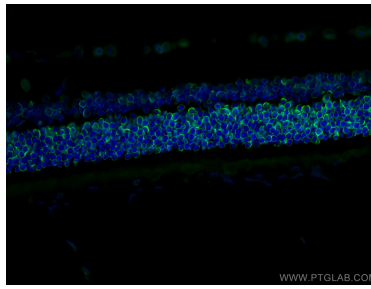
E: [proteintech@ptglab.com](mailto:proteintech@ptglab.com)  
W: [ptglab.com](http://ptglab.com)

This product is exclusively available under Proteintech Group brand and is not available to purchase from any other manufacturer.

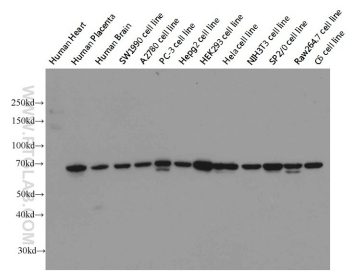
## Données de validation sélectionnées



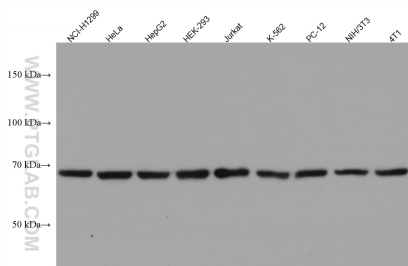
Immunofluorescent analysis of (-20°C Ethanol) fixed HepG2 cells using 66095-1-Ig (Lamin B1 antibody) at dilution of 1:500 and CoraLite488-Conjugated AffiniPure Goat Anti-Mouse IgG(H+L).



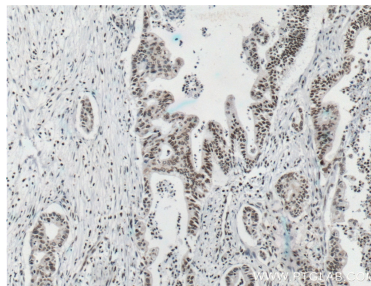
Immunofluorescent analysis of (4% PFA) fixed mouse eye tissue using Lamin B1 antibody (66095-1-Ig, Clone: 3C10G12) at dilution of 1:400 and CoraLite®488-Conjugated AffiniPure Goat Anti-Mouse IgG(H+L).



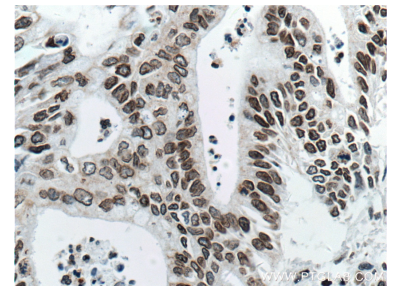
Western blot on multiple cells/tissues with anti-LMNB1 (66095-1-Ig) at dilution 1:20000.



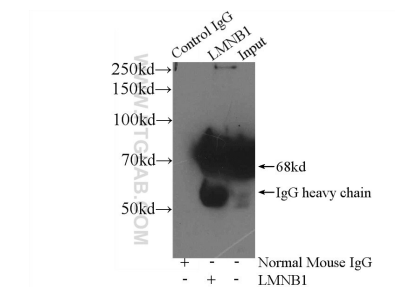
Various lysates were subjected to SDS PAGE followed by western blot with 66095-1-Ig (Lamin B1 antibody) at dilution of 1:100000 incubated at room temperature for 1.5 hours.



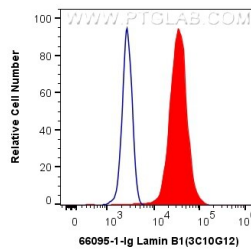
Immunohistochemical analysis of paraffin-embedded human pancreas cancer tissue slide using 66095-1-Ig (Lamin B1 antibody) at dilution of 1:1000 (under 10x lens. Heat mediated antigen retrieval with Tris-EDTA buffer (pH 9.0).



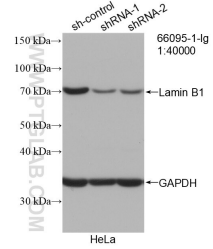
Immunohistochemical analysis of paraffin-embedded human pancreas cancer tissue slide using 66095-1-Ig (Lamin B1 antibody) at dilution of 1:1000 (under 40x lens. Heat mediated antigen retrieval with Tris-EDTA buffer (pH 9.0).



IP Result of anti-Lamin B1 (IP:66095-1-Ig, 4ug; Detection:66095-1-Ig 1:20000) with HeLa cells lysate 3560ug.



1X10<sup>6</sup> HeLa cells were intracellularly stained with 0.4 ug Anti-Human Lamin B1 (66095-1-Ig, Clone:3C10G12) and CoraLite®488-Conjugated AffiniPure Goat Anti-Mouse IgG(H+L) at dilution 1:1000 (red), or 0.4 ug Mouse IgG1 Isotype Control (MOPC-21) (65124-1-Ig, Clone: MOPC-21) (blue). Cells were fixed and permeabilized with Transcription Factor Staining Buffer Kit (PF00011).



WB result of Lamin B1 antibody (66095-1-Ig; 1:40000; incubated at room temperature for 1.5 hours) with sh-Control and sh-Lamin B1 transfected HeLa cells.