

À des fins de recherche uniquement

# Anticorps Monoclonal anti-CD22

Numéro de catalogue: 66103-1-Ig



## Informations de base

|  |  |   |
|--|--|---|
| <b>Numéro de catalogue:</b><br>66103-1-Ig  | <b>Numéro d'acquisition GenBank:</b><br>BC109306 | <b>Méthode de purification:</b><br>Purification par protéine A                              |
| <b>Taille:</b><br>150ul , Concentration: 3400 µg/ml by Nanodrop and 2187 µg/ml by Bradford method using BSA as the standard; | <b>Identification du gène (NCBI):</b><br>933     | <b>CloneNo.:</b><br>7A2F1   |
| <b>Hôte:</b><br>Mouse  | <b>Nom complet:</b><br>CD22 molecule             | <b>Dilutions recommandées:</b><br>WB 1:2500-1:10000<br>IHC 1:10000-1:40000<br>IF 1:50-1:500 |
| <b>Isotype:</b><br>IgG2a   | <b>MW calculé:</b><br>847 aa, 95 kDa             |   |
| <b>Immunogen Catalog Number:</b><br>AG17986  | <b>MW observés:</b><br>135 kDa                   |   |

## Applications

### Applications testées:

IF, IHC, WB, ELISA

### Spécificité de l'espèce:

Humain

**Remarque-IHC: il est suggéré de démasquer l'antigène avec un tampon de TE buffer pH 9.0; (\*) À défaut, 'le démasquage de l'antigène peut être 'effectué avec un tampon citrate pH 6,0.**

### Contrôles positifs:

WB : cellules Ramos, cellules Daudi, cellules Raji

IHC : tissu d'amygdalite humain, tissu d'appendicite humain

IF : tissu d'amygdalite humain, cellules Raji

## Informations générales

CD22, also known as Siglec-2 (sialic acid binding Ig-like lectin 2) or BL-CAM (B-lymphocyte cell adhesion molecule), is a 130-140 kDa, B-cell restricted, type I transmembrane glycoprotein belonging to the immunoglobulin gene superfamily. The expression of CD22 is developmentally regulated. It is expressed at low levels in the cytoplasm of pro-B and pre-B cells and present on the cell surface only at mature stages of B-cell differentiation. Cell surface expression is lost during terminal differentiation into plasma cell and after B-cell activation. CD22 is an inhibitory receptor for B-cell receptor (BCR) signalling, preferentially binds to alpha-2,6-linked sialic acid and mediates B-cell B-cell interactions. It plays a crucial role in activation and differentiation of the B-cell.

## Stockage

### Stockage:

Stocker à -20°C. Stable pendant un an après l'expédition.

### Tampon de stockage:

PBS avec azoture de sodium à 0,02 % et glycérol à 50 % pH 7,3

L'aliquotage n'est pas nécessaire pour le stockage à -20C

\*\*\* Les 20ul contiennent 0,1% de BSA.

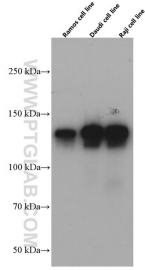
For technical support and original validation data for this product please contact:

T: 1 (888) 4PTGLAB (1-888-478-4522) (toll free in USA), or 1(312) 455-8498 (outside USA)

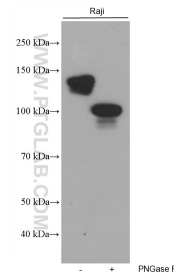
E: proteintech@ptglab.com  
W: ptglab.com

This product is exclusively available under Proteintech Group brand and is not available to purchase from any other manufacturer.

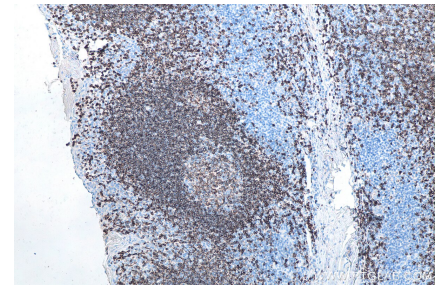
## Données de validation sélectionnées



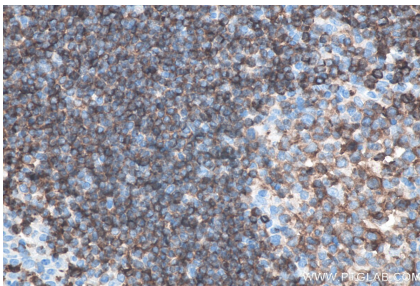
Ramos, Daudi, and Raji cells were subjected to SDS PAGE followed by western blot with 66103-1-Ig (CD22 antibody) at dilution of 1:5000 incubated at room temperature for 1.5 hours.



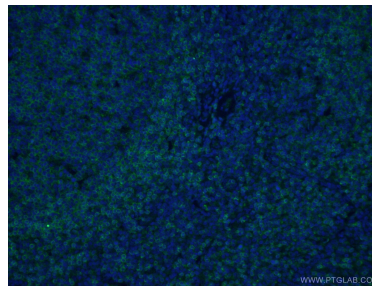
Untreated and PNGase F-treated lysates of Raji cells were subjected to SDS PAGE followed by western blot with 66103-1-Ig (CD22 antibody) at dilution of 1:20000 incubated at room temperature for 1.5 hours. PNGase F was obtained from Atagenix (cat.NO. ata808).



Immunohistochemical analysis of paraffin-embedded human tonsillitis tissue slide using 66103-1-Ig (CD22 antibody) at dilution of 1:20000 (under 10x lens). Heat mediated antigen retrieval with Tris-EDTA buffer (pH 9.0).



Immunohistochemical analysis of paraffin-embedded human tonsillitis tissue slide using 66103-1-Ig (CD22 antibody) at dilution of 1:20000 (under 40x lens). Heat mediated antigen retrieval with Tris-EDTA buffer (pH 9.0).



Immunofluorescent analysis of (4% PFA) fixed human tonsillitis tissue using 66103-1-Ig (CD22 antibody) at dilution of 1:100 and Alexa Fluor 488-conjugated AffiniPure Goat Anti-Mouse IgG(H+L).