

À des fins de recherche uniquement

# Anticorps Monoclonal anti-RBP4

Numéro de catalogue: 66104-1-Ig



## Informations de base

<b>Numéro de catalogue:</b> 66104-1-Ig	<b>Numéro d'acquisition GenBank:</b> BC020633	<b>Méthode de purification:</b> Purification par protéine A
<b>Taille:</b> 150ul, Concentration: 1400 µg/ml by Nanodrop and 1213 µg/ml by Bradford method using BSA as the standard;	<b>Identification du gène (NCBI):</b> 5950	<b>CloneNo.:</b> 1D12B11
<b>Hôte:</b> Mouse	<b>Nom complet:</b> retinol binding protein 4, plasma	<b>Dilutions recommandées:</b> WB 1:1000-1:8000 IHC 1:20-1:200 IF 1:200-1:800
<b>Isotype:</b> IgG2a	<b>MW calculé:</b> 201 aa, 23 kDa	
<b>Immunogen Catalog Number:</b> AG19295	<b>MW observés:</b> 23 kDa	

## Applications

**Applications testées:**  
FC, IF, IHC, WB, ELISA

**Spécificité de l'espèce:**  
Humain

**Remarque-IHC: il est suggéré de démasquer l'antigène avec un tampon de TE buffer pH 9.0; (\*) À défaut, le démasquage de l'antigène peut être effectué avec un tampon citrate pH 6,0.**

**Contrôles positifs:**

**WB :** sang humain, tissu

**IHC :** tissu de cancer du foie humain, tissu hépatique humain

**IF :** tissu de cancer du foie humain,

## Informations générales

RBP4 (retinol-binding protein 4) is a carrier protein that transports vitamin A (retinol) from the liver to the peripheral tissues. Synthesized primarily by hepatocytes and adipocytes as a 21 kDa non-glycosylated protein, RBP4 is secreted into the circulation as a retinol-RBP4 complex. In plasma the RBP4-retinol complex is bound to transthyretin (TRR), which prevents prevent kidney filtration. Two truncated forms of RBP4, RBP4-L (truncated at Leu-183) and RBP4-LL (truncated at Leu-182 and Leu-183), exist by proteolytic process. RBP4-L and RBP4-LL, which do not bind TTR, are normally excreted into the urine but accumulate in the serum during renal failure. Urinary RBP4 has been reported as marker for glomerular disease. RBP4 also was identified as an adipokine that elevated in some INS-resistant states. Measurement of serum RBP4 could be used to assess the risk of INS resistance, type 2 diabetes, obesity, and cardiovascular disease. (18752671, 16034410)

## Stockage

**Stockage:**

Stocker à -20°C. Stable pendant un an après l'expédition.

**Tampon de stockage:**

PBS avec azoture de sodium à 0,02 % et glycérol à 50 % pH 7,3

L'aliquotage n'est pas nécessaire pour le stockage à -20C

\*\*\* Les 20ul contiennent 0,1% de BSA.

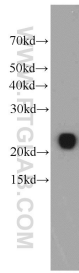
For technical support and original validation data for this product please contact:

T: 1 (888) 4PTGLAB (1-888-478-4522) (toll free in USA), or 1(312) 455-8498 (outside USA)

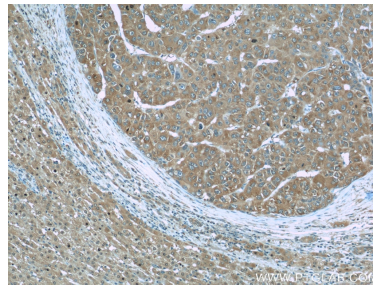
E: proteintech@ptglab.com  
W: ptglab.com

This product is exclusively available under Proteintech Group brand and is not available to purchase from any other manufacturer.

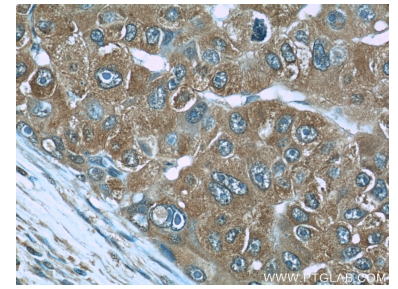
## Données de validation sélectionnées



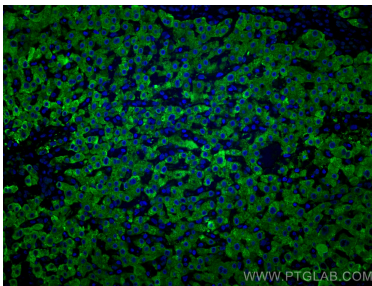
human blood were subjected to SDS PAGE followed by western blot with 66104-1-Ig (RBP4 antibody) at dilution of 1:4000 incubated at room temperature for 1.5 hours.



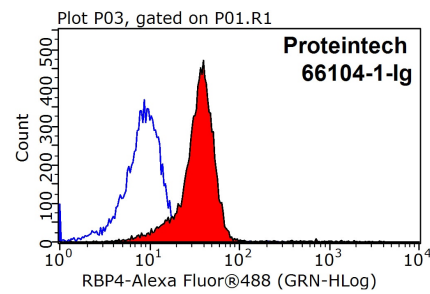
Immunohistochemical analysis of paraffin-embedded human liver cancer slide using 66104-1-Ig (RBP4 Antibody) at dilution of 1:50.



Immunohistochemical analysis of paraffin-embedded human liver cancer slide using 66104-1-Ig (RBP4 Antibody) at dilution of 1:50.



Immunofluorescent analysis of (4% PFA) fixed human liver cancer tissue using RBP4 antibody (66104-1-Ig, Clone: 1D12B11 ) at dilution of 1:400 and CoraLite®488-Conjugated AffiniPure Goat Anti-Mouse IgG(H+L).



$1 \times 10^6$  HepG2 cells were stained with 0.2ug RBP4 antibody (66104-1-Ig, red) and control antibody (blue). Fixed with 90% MeOH blocked with 3% BSA (30 min). Alexa Fluor 488-conjugated AffiniPure Goat Anti-Mouse IgG(H+L) with dilution 1:1000.