

À des fins de recherche uniquement

Anticorps Monoclonal anti-COXIV

Numéro de catalogue: 66110-1-Ig **24 Publications**



Informations de base

Numéro de catalogue: 66110-1-Ig	Numéro d'acquisition GenBank: BC021236	Méthode de purification: Purification par protéine G
Taille: 150ul, Concentration: 2000 µg/ml by Nanodrop;	Identification du gène (NCBI): 1327	CloneNo.: 2A7B2
Hôte: Mouse	Nom complet: cytochrome c oxidase subunit IV isoform 1	Dilutions recommandées: WB 1:5000-1:50000 IHC 1:250-1:1000 IF 1:50-1:500
Isotype: IgG1	MW calculé: 19.6 kDa	
Immunogen Catalog Number: AG20551	MW observés: 17-18 kDa	

Applications

Applications testées:
FC, IF, IHC, WB, ELISA

Demandes citées:
IF, WB

Spécificité de l'espèce:
Humain

Espèces citées:
Humain, rat, souris

Contrôles positifs:

WB : cellules A431, cellules HEK-293, cellules HeLa, cellules HepG2, cellules Jurkat, cellules K-562, cellules LNCaP

IHC : tissu de cancer de la prostate humain, tissu cardiaque humain, tissu pancréatique humain

IF : cellules HepG2,

Remarque-IHC: il est suggéré de démasquer l'antigène avec un tampon de TE buffer pH 9,0; (*) À défaut, le démasquage de l'antigène peut être effectué avec un tampon citrate pH 6,0.

Informations générales

COX4l1, also named as COX4 and COXIV-1, belongs to the cytochrome c oxidase IV family. It is one of the nuclear-coded polypeptide chains of cytochrome c oxidase, the terminal oxidase in mitochondrial electron transport. COX4l1 is a marker for mitochondria. It has two isoforms (isoform 1 and 2). Isoform 1(COX4l1) is ubiquitously expressed and isoform 2 is highly expressed in lung tissues. COX4l1 is commonly used as a loading control. This antibody is specific to COX4l1 and do not cross reacts with COX4l2.

Publications notables

Autrice	Pubmed ID	Journal	Application
Zi-Chao Wang	36163178	Cell Death Dis	WB
Xingfeng Liu	36131205	Nat Metab	WB
Xin-Hui Wang	34526554	Sci Rep	IF

Stockage

Stockage:

Stocker à -20°C. Stable pendant un an après l'expédition.

Tampon de stockage:

PBS avec azoture de sodium à 0,02 % et glycérol à 50 % pH 7,3

L'aliquotage n'est pas nécessaire pour le stockage à -20C

***** Les 20ul contiennent 0,1% de BSA.**

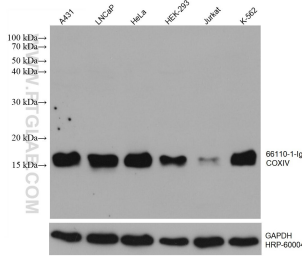
For technical support and original validation data for this product please contact:

T: 1 (888) 4PTGLAB (1-888-478-4522) (toll free in USA), or 1(312) 455-8498 (outside USA)

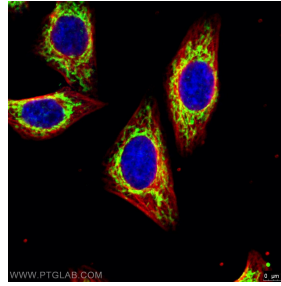
E: proteintech@ptglab.com
W: ptglab.com

This product is exclusively available under Proteintech Group brand and is not available to purchase from any other manufacturer.

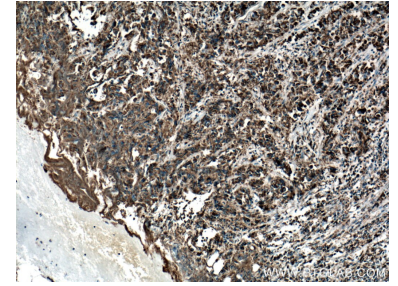
Données de validation sélectionnées



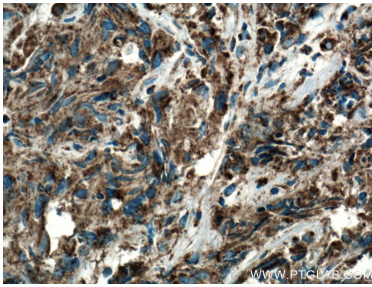
Various lysates were subjected to SDS PAGE followed by western blot with 66110-1-Ig (COXIV antibody) at dilution of 1:20000 incubated at room temperature for 1.5 hours. The membrane was stripped and reblotted with HRP-conjugated GAPDH Monoclonal antibody (HRP-60004) as loading control.



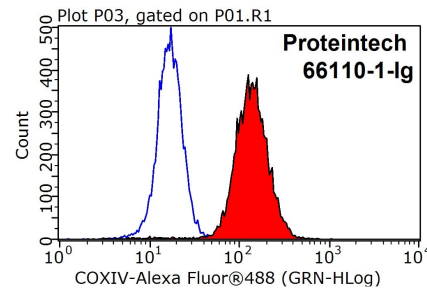
Immunofluorescent analysis of (4% PFA) fixed HepG2 cells using 66110-1-Ig (COXIV antibody, 1:100) at dilution of 1:100 and Alexa Fluor 488-Conjugated AffiniPure Goat Anti-Mouse IgG(H+L); Red is the staining with alpha Tubulin antibody (11224-1-AP, 1:100).



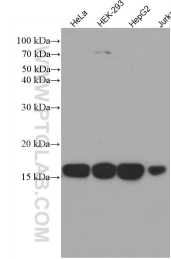
Immunohistochemical analysis of paraffin-embedded human prostate cancer tissue slide using 66110-1-Ig (COXIV antibody) at dilution of 1:500 (under 10x lens. Heat mediated antigen retrieval with Tris-EDTA buffer (pH 9.0).



Immunohistochemical analysis of paraffin-embedded human prostate cancer tissue slide using 66110-1-Ig (COXIV antibody) at dilution of 1:500 (under 40x lens. Heat mediated antigen retrieval with Tris-EDTA buffer (pH 9.0).



1X10⁶ HeLa cells were stained with 0.2ug COXIV antibody (66110-1-Ig, red) and control antibody (blue). Fixed with 90% MeOH blocked with 3% BSA (30 min). Alexa Fluor 488-conjugated AffiniPure Goat Anti-Mouse IgG(H+L) with dilution 1:1000.



Various lysates were subjected to SDS PAGE followed by western blot with 66110-1-Ig (COXIV antibody) at dilution of 1:3000 incubated at room temperature for 1.5 hours.